

PG-S 4 SM

Installation Instructions

Polyglass Split Repair for 4 Stud Environ Sub Miniature Penetrations



Diversified Products
Manufacturing Inc.



Weaver Products

Prepare all Surfaces: All surfaces to be bonded should be prepared prior to Completing the installation steps below.

Warning: Failure to follow each step will void the warranty and may result in premature failure of the penetration fitting. Adhere to the following general instructions for each step of the installation.

Bonding to Poly & FRP surfaces: Clean and sand (rough up) sump surfaces with CH-DBC II. Remove all gel coat on all fiberglass surfaces. Apply CH-DBB V to all surfaces to be bonded both the fitting and sump wall.

Cleaning: Spray all surfaces to be bonded with CH-DBC II Cleaner and allow to air dry. Excess cleaner may be wiped off with a clean dry cloth.

PG-S Polyglass Repair Kits are used to Repair Studded Penetration Fittings.

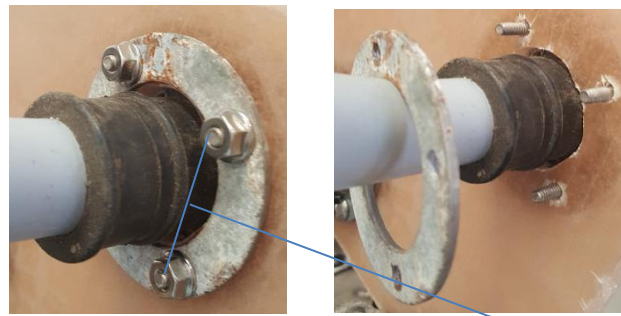
Note: These penetration stud patterns are unique for Environ's sub miniature 3/4" conduit penetrations

Step 1

Remove Boot-

Typical for 4 Stud Environ Sub Miniature penetrations
The Boot shown is sealed to the sump exterior.

To Repair:
Remove the Metal Ring (slide it back over the existing pipe)
Cut off the Existing boot.

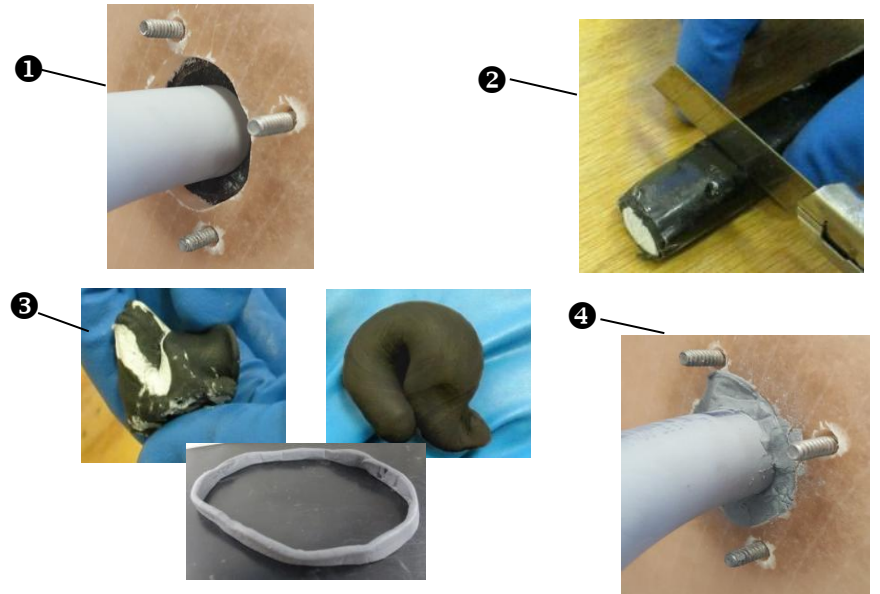


Distance between studs center to center 1 5/8"

Step 2

Seal the openings between the pipe and the sump wall with CH-DSP-4-

- 1) Sand all bonding surfaces. Remove all debris and gel coat.
- 2) Cut off the amount of CH-DSP-4 to be used.
- 3) Roll and knead putty between hands until a consistent grey color is achieved-approximately two minutes. Form a thin membrane using the putty.
- 4) Apply a sufficient amount between the pipe & sump wall.
Do not overfill the bond area. Less is better-just enough to create a seal between the pipe and wall.



Step 3

Clean Polyglass Ring with CH-DBC II and apply Epoxy

Spray with CH-DBC II. Wipe or air dry. (fitting and sump) Cut the Polyglass Ring approximately equally between the Stud Holes.
Apply Epoxy CH-DEB to Bonding surfaces and spread evenly



Smooth epoxy after applying. Cover entire surface with even coating.

Step 4

Install PG-S Bonding Ring over Existing studs-

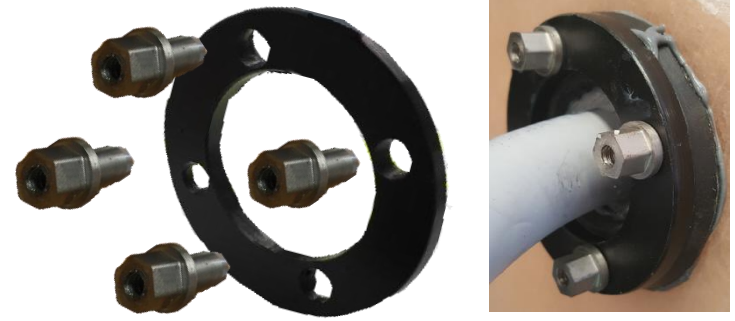
Wrap split Polyglass Ring around the pipe and slide over existing studs.



Step 5

Install Securing plate :

RA Split ring with stainless nuts are provided in the kit. Install the new ring over existing studs and tighten new 10-24 custom manufactured nuts, supplied in kit. Snug plate to the polyglass ring using the nuts.



Step 6

Prepare Bulk Epoxy DEB-Bulk13 and Install:

Open both cans and add the contents of the smaller can of hardener (Part B) to the large can of resin (Part A) and stir with the wooden stir stick provided.

When properly blended, the DEB epoxy is ready to cure. When using on vertical surfaces allow a few minutes to "set up" sufficiently to keep Epoxy from running. Use a spatula or other item to apply the DEB epoxy.



Step 7

Fill gap with CH-DEB Epoxy:

Fill the gap between the PG-S Series bonding ring, and the pipe with the CH-DEB epoxy.



After initially installing the as shown to the left, smooth epoxy.

Step 8

Paint with CH-DBF II:

Paint 1/2" beyond the repair on both the sump wall and the pipe to complete installation.

Hydrostatic test may be performed 1 Hour after Painting.



Tools Required

- Sanding Tool (for sump walls)
- CH-DAG III Applicator Gun
- CH-DSM III Static Mixers (additional)
- Box Knife for Cutting Polyglass Ring

Epoxy Requirements		
Pipe Size	ML	Oz
PG-S 4 SM		
3/4" Rigid Conduit	12	0.65

ML = millimeters for 50 ml cartridges
OZ = Ounces for Bulk applications

Products Needed

- PG-S 4 SM Kit :
 - 1- PG-S 4 SM kit
- DEIK-13 Installation Kit consisting of:
 - 1-50ml CH-DBF II Polysulfide Paint
 - 1-50ml CH-DEB Epoxy
 - 1-13oz CH-DEB-BULK Epoxy
 - 1-Each Spatula, Brush,
 - 1-Each CH DSP-4 Super Putty Stick
 - 1-Each CH-DBC II Aerosol Cleaner
 - 1-Each pair Gloves
 - 1 Each stir Stick
 - 1 each installation instructions