

PG-U II

-2.0
-3.5
-4.0
-5.0
-6.0
-8.5

Installation Instructions

Polyglass Split Repair for TCI, OPW Conical Seals, Blueline & Weaver Penetrations



Diversified Products
Manufacturing Inc.



Weaver Products

Prepare all Surfaces: All surfaces to be bonded should be prepared prior to Completing the installation steps below.

Warning: Failure to follow each step will void the warranty and may result in premature failure of the penetration fitting. Adhere to the following general instructions for each step of the installation.

Bonding to Poly & FRP surfaces: Clean and sand (rough up) sump surfaces with CH-DBC II. Remove all gel coat on all fiberglass surfaces. Apply CH-DEB to all surfaces to be bonded both the fitting and sump wall.

Cleaning: Spray all surfaces to be bonded with CH-DBC II Cleaner and allow to air dry. Excess cleaner may be wiped off with a clean dry cloth.

PG-U II Polyglass Repair Kits are used to Repair Threaded Penetration Fittings.

Note: Most Threaded Penetrations are different in the removal process before installing the polyglass repair. Review installation instructions for OPW Conical Seals, TCI Threaded, Blueline & Weaver/Diversified penetration removal. This installation instruction is a generic representation of many repair kits. A TCI UB 2000 is followed to completion in this instruction.

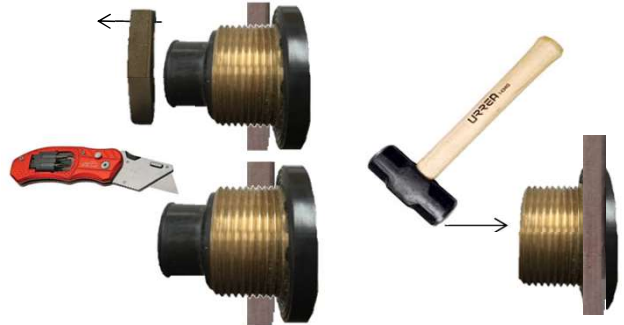
Step 1

Remove Boot This installation instruction assumes the existing penetration fitting will be totally removed. Review supplemental instructions for each manufacturer, TCI, OPW Pisces, Blueline/Icon and Diversified penetrations. The picture at the right shows a TCI UB 2000 prior to removal. Once removed proceed with these instructions.



Step 2

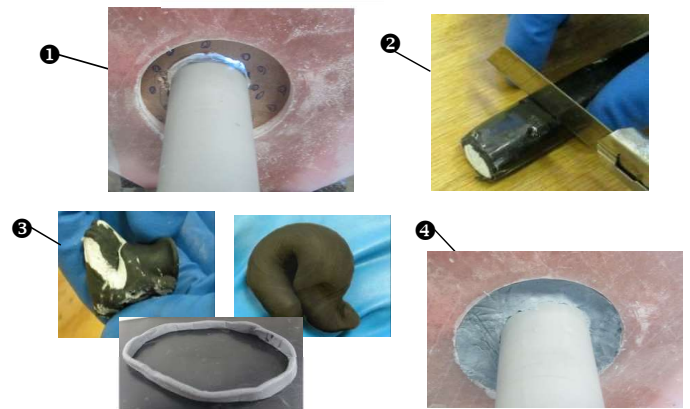
Boot Removal: Remove nut, cut away flexible boot, and drive body out of sump wall.



Step 3

Seal the openings between the pipe and the sump wall with CH-DSP-4

- 1) Sand all bonding surfaces. Remove all debris and gelcoat.
- 2) Cut off the amount of CH-DSP-4 to be used.
- 3) Roll and knead putty between hands until a consistent grey color is achieved-approximately two minutes. Form a thin membrane using the putty.
- 4) Apply a sufficient amount between the pipe & sump wall. Do not overfill the bond area. Less is better-just enough to create a seal between the pipe and wall.



Step 4

Clean Polyglass Ring with CH-DBC II and apply Epoxy

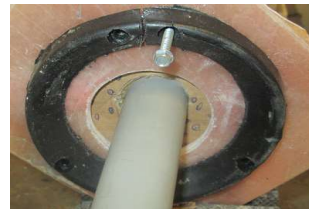
Spray with CH-DBC II. Wipe or air dry. (fitting and sump) Cut the Polyglass Ring approximately equally between the Tec Screw Holes. Apply Epoxy CH-DEB to Bonding surfaces and spread evenly.



IN-PGU II Series-1.1

Step 5

Install PG-U II Bonding Ring Wrap split Polyglass Ring around the pipe and Tech screw to sump wall.



Step 6

Prepare Bulk Epoxy DEB-Bulk13 and Install:

Open both cans and add the contents of the smaller can of hardener (Part B) to the large can of resin (Part A) and stir with the wooden stir stick provided.

When properly blended, the DEB epoxy is ready to cure. When using on vertical surfaces allow a few minutes to “set up” sufficiently to keep Epoxy from running. Use a spatula or other item to apply the DEB epoxy.

WARNING: MIX CAREFULLY TO ENSURE THE EPOXY IS WELL CATALYZED.



Step 7

Fill gap with CH-DEB Epoxy

Fill the gap between the PG-U II Series bonding ring, and the pipe with the CH-DEB epoxy.



Step 8

Paint with CH-DBF II-

Paint ½” beyond the repair on both the sump wall and the pipe to complete installation.

Hydrostatic test may be performed 1 Hour after Painting.



Tools Required

- Sanding Tool (for sump walls)
- CH-DAG III Applicator Gun
- CH-DSM III Static Mixers (additional)
- Box Knife for Cutting Polyglass Ring

Epoxy Requirements

Pipe Size	ML	OZ
3/4" Rigid Conduit	195	6.3
1" Rigid Conduit	186	6

ML = milleters for 50 ml cartridges
OZ = Ounces for Bulk applications

Products Needed

- PG-U II 3.5 Kit :
- 1- PG-U II 3.5 Repair Kit

• DEIK-13 Installation Kit:

- 1-50ml CH-DBF II Polysulfide Paint
- 1-50ml CH-DEB Epoxy
- 1-13oz CH-DEB-BULK Epoxy
- 1-Each Spatula, Brush, Gloves, Stir stick, installation instructions
- 1-CH-DSP-4 Super Putty
- 1-CH-DBC II - Aerosol Cleaner

IN-PGU II-1.1