



## “Better By Design”

### Polyglass II Universal Repair Fittings

#### TECHNICAL DATA SHEET

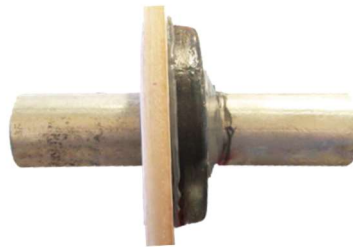
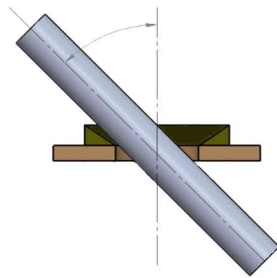
Polyglass Universal repair fittings can be used on Fiberglass or Poly Sumps and on Round or flat surfaces.



Alcryn

With 25% Glass Fiber Fill

#### ANGULAR DEFLECTION DATA

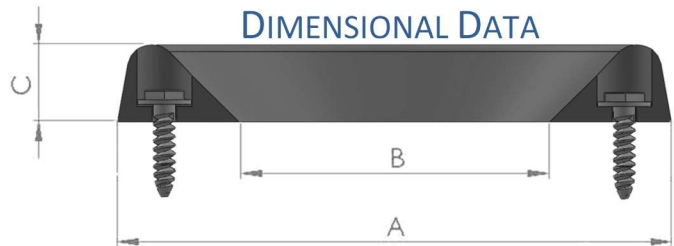


Installed Fitting



Two Part Epoxy Resin Coated with DBF II Polysulfide Paint

#### DIMENSIONAL DATA



Maximum Off-Axis Entry Angle for DPM Fiberglass Fittings and Common Pipes		
Fitting	Pipe	Maximum Angle Off-Axis (degrees)
PG-U II-2.0	¾" Rigid Conduit	48
	1" Rigid Conduit	39
PG-U II-3.5	2" FRP (Ameron)	41
	2" LCX (Ameron)	34
PG-U II-4.0		
PG-U II-5.0	3" FRP (Ameron)	41 (45*)
	3" LCX (Ameron)	38
	4" FRP (Ameron)	22
	4" LCX (Ameron)	13
PG-U II-6.0		
PG-U II-8.5	6" FRP (Ameron)	45

\* Consult Factory for Additional Pipe Sizes

Part Number	Recommended Pipe Diameter	A	B	C
PG-U II-2.0	≤ 1.8"	3.50"	2.00"	0.50"
PG-U II-3.5	≤ 3.5"	5.00"	3.50"	0.50"
PG-U II-4.0	≤ 4.0"	5.50"	4.00"	0.50"
PG-U II-5.0	≤ 4.5"	6.50"	5.00"	0.50"
PG-U II-6.0	≤ 5.5"	7.50"	6.00"	0.50"
PG-U II-8.5	≤ 8.5"	10.00"	8.50"	0.50"

**DEIK-13 Installation Kit contains enough chemicals for (6) PGU II-2.0 -or- (3) PGU II-3.5 -or-(3)PGU II-4.0 -or- (2) PGU II-5.0 -or- (2) PGU II-6.0 -or- (1) PGU II-8.5**

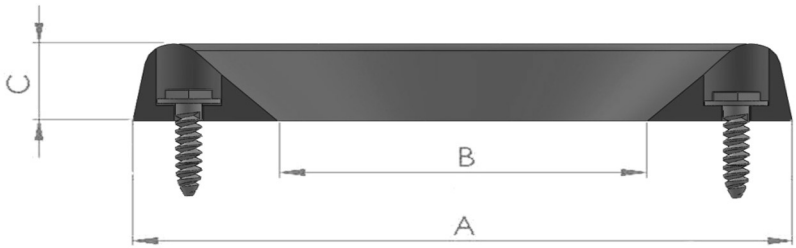
#### THIRD PARTY APPROVALS



#### PRODUCTS USED ON THIS PROJECT

Yes	No		
<input type="checkbox"/>	<input type="checkbox"/>	2.0" Polyglass Penetration Fitting	PG-U II-2.0
<input type="checkbox"/>	<input type="checkbox"/>	3.5" Polyglass Penetration Fitting	PG-U II-3.5
<input type="checkbox"/>	<input type="checkbox"/>	4.0" Polyglass Penetration Fitting	PG-U II-4.0
<input type="checkbox"/>	<input type="checkbox"/>	5.0" Polyglass Penetration Fitting	PG-U II-5.0
<input type="checkbox"/>	<input type="checkbox"/>	6.0" Polyglass Penetration Fitting	PG-U II-6.0
<input type="checkbox"/>	<input type="checkbox"/>	8.5" Polyglass Penetration Fitting	PG-U II-8.5





Part Number	Pipe OD"	DEB Bulk (oz)	DEB 50ml (oz)	Ring OD" (A)	Ring ID" (B)	Ring Height (C)	Part Number	Pipe OD"	DEB Bulk (oz)	DEB 50ml (oz)	Ring OD" (A)	Ring ID" (B)	Ring Height (C)
PG-U II-2.0							PG-U II-5.0						
	0.90	2.2	0.50	3.500	2.000	0.500		3.00	6.6	1.00	6.500	5.000	0.500
	1.00	2.1	0.50	3.500	2.000	0.500		3.10	6.5	1.00	6.500	5.000	0.500
	1.10	2.1	0.50	3.500	2.000	0.500		3.20	6.4	1.00	6.500	5.000	0.500
	1.20	2.0	0.50	3.500	2.000	0.500		3.30	6.2	1.00	6.500	5.000	0.500
	1.30	2.0	0.50	3.500	2.000	0.500		3.40	6.1	1.00	6.500	5.000	0.500
	1.40	2.0	0.50	3.500	2.000	0.500		3.50	5.9	1.00	6.500	5.000	0.500
	1.50	1.9	0.50	3.500	2.000	0.500		3.60	5.8	1.00	6.500	5.000	0.500
PG-U II-3.5								3.70	5.6	1.00	6.500	5.000	0.500
	1.60	4.4	0.75	5.000	3.500	0.500		3.80	5.4	1.00	6.500	5.000	0.500
	1.70	4.3	0.75	5.000	3.500	0.500		3.90	5.2	1.00	6.500	5.000	0.500
	1.80	4.2	0.75	5.000	3.500	0.500		4.00	5.1	1.00	6.500	5.000	0.500
	1.90	4.1	0.75	5.000	3.500	0.500		4.10	5.0	1.00	6.500	5.000	0.500
	2.00	4.0	0.75	5.000	3.500	0.500		4.20	4.8	1.00	6.500	5.000	0.500
	2.10	4.0	0.75	5.000	3.500	0.500		4.30	4.6	1.00	6.500	5.000	0.500
	2.20	3.9	0.75	5.000	3.500	0.500		4.40	4.4	1.00	6.500	5.000	0.500
	2.30	3.8	0.75	5.000	3.500	0.500		4.50	4.2	1.00	6.500	5.000	0.500
	2.40	3.7	0.75	5.000	3.500	0.500	PG-U II-6.0						
	2.50	3.6	0.75	5.000	3.500	0.500		4.90	14.3	1.50	7.500	6.000	0.500
	2.60	3.6	0.75	5.000	3.500	0.500		5.00	13.8	1.50	7.500	6.000	0.500
	2.70	3.4	0.75	5.000	3.500	0.500		5.10	13.2	1.50	7.500	6.000	0.500
	2.80	3.2	0.75	5.000	3.500	0.500		5.20	12.6	1.50	7.500	6.000	0.500
	2.90	3.1	0.75	5.000	3.500	0.500		5.30	12.0	1.50	7.500	6.000	0.500
PG-U II-4.0								5.40	11.4	1.50	7.500	6.000	0.500
	2.0	6.2	.85	5.500	4.000	0.500		5.50	10.9	1.50	7.500	6.000	0.500
	2.3	5.9	.85	5.500	4.000	0.500		5.60	10.3	1.50	7.500	6.000	0.500
	2.5	5.0	.85	5.500	4.000	0.500		5.70	9.7	1.50	7.500	6.000	0.500
	3.0	4.0	.85	5.500	4.000	0.500		5.80	9.1	1.50	7.500	6.000	0.500
PG-U II-5.0							PG-U II-8.5						
	3.00	6.6	1.00	6.500	5.000	0.500		5.90	20.6	2.00	10.000	8.500	0.500
	3.10	6.5	1.00	6.500	5.000	0.500		6.00	20.6	2.00	10.000	8.500	0.500
	3.20	6.4	1.00	6.500	5.000	0.500		6.10	20.0	2.00	10.000	8.500	0.500
	3.30	6.2	1.00	6.500	5.000	0.500		6.20	19.4	2.00	10.000	8.500	0.500
	3.40	6.1	1.00	6.500	5.000	0.500		6.30	18.8	2.00	10.000	8.500	0.500
	3.50	5.9	1.00	6.500	5.000	0.500		6.40	18.2	2.00	10.000	8.500	0.500
	3.60	5.8	1.00	6.500	5.000	0.500		6.50	17.6	2.00	10.000	8.500	0.500
	3.70	5.6	1.00	6.500	5.000	0.500		6.60	17.0	2.00	10.000	8.500	0.500
	3.80	5.4	1.00	6.500	5.000	0.500		6.70	16.4	2.00	10.000	8.500	0.500
	3.90	5.2	1.00	6.500	5.000	0.500		6.80	15.8	2.00	10.000	8.500	0.500
	4.00	5.1	1.00	6.500	5.000	0.500		6.90	15.2	2.00	10.000	8.500	0.500
	4.10	5.0	1.00	6.500	5.000	0.500		7.00	14.6	2.00	10.000	8.500	0.500
	4.20	4.8	1.00	6.500	5.000	0.500		7.10	14.0	2.00	10.000	8.500	0.500
	4.30	4.6	1.00	6.500	5.000	0.500		7.20	13.4	2.00	10.000	8.500	0.500
	4.40	4.4	1.00	6.500	5.000	0.500		7.30	12.8	2.00	10.000	8.500	0.500
	4.50	4.2	1.00	6.500	5.000	0.500		7.40	12.2	2.00	10.000	8.500	0.500
	4.60	4.0	1.00	6.500	5.000	0.500		7.50	11.6	2.00	10.000	8.500	0.500
	4.70	3.7	1.00	6.500	5.000	0.500		7.60	10.9	2.00	10.000	8.500	0.500
	4.50	3.5	1.00	6.500	5.000	0.500		7.70	10.3	2.00	10.000	8.500	0.500
								7.80	10.3	2.00	10.000	8.500	0.500

\*DEB Bulk: Is Bonder for Ring to Sump

\*DEB 50ml: Bonder for Ring to Pipe