



*"Better by Design"*

# PRODUCT CATALOG 2022

## Diversified Products Manufacturing Inc.

5523 Baggett Marysville Road

Oroville, CA 95965

e-mail: [sales@dpm-llc.com](mailto:sales@dpm-llc.com)

Web: [www.dpm-co.com](http://www.dpm-co.com)

Phone: 530-534-3966 Fax: 530-534-7404



UDC  
SUMPS



ABOVE  
GROUND/  
TRANSITION  
SUMPS



PENETRATION  
FITTINGS



TANK  
SUMPS



REPAIR  
PRODUCTS





---

<b>Under Dispenser Sumps</b>	<b>1</b>
<b>Under Dispenser Containment Accessories</b>	<b>3</b>
<b>Aboveground Under Dispenser Containment</b>	<b>5</b>
<b>DEF Fiberglass Under Dispenser Containment</b>	<b>7</b>
<b>Fiberglass Tank Sumps</b>	<b>8</b>
<b>Fiberglass Tank Sump Accessories</b>	<b>11</b>
<b>Fiberglass Magnetic Lid</b>	<b>13</b>
<b>Transition Sumps</b>	<b>14</b>
<b>Transition Sump Accessories</b>	<b>15</b>
<b>Vent Sumps</b>	<b>16</b>
<b>Fiberglass Penetration Fittings</b>	<b>17</b>
<b>Penetration Fittings</b>	<b>19</b>
<b>Flex Connectors</b>	<b>30</b>
<b>Inserts, Caps &amp; Plugs</b>	<b>34</b>
<b>Centralizers</b>	<b>37</b>
<b>Test Reducers</b>	<b>38</b>
<b>Crossover Fittings</b>	<b>44</b>
<b>Fiberglass Split Repair</b>	<b>45</b>
<b>Penetration Repair Kits</b>	<b>47</b>
<b>Spilt Test Reducers</b>	<b>48</b>
<b>Split Repair Kits</b>	<b>54</b>
<b>Split Inserts</b>	<b>62</b>

---





---

Industrial	66
Chemicals	68
Accessories	71
Tools / Supplies	72
Back Cover	81

# Under Dispenser Sumps



*"Better by Design"*

Retail & Commercial Sumps - Fiberglass

## Retail & Commercial Sumps - Fiberglass UDC



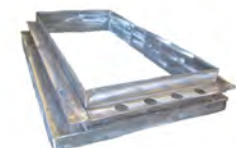
Part #	Description
SU-RSF II-C	DPM Fiberglass Retail Sump With Straight Walls and Cup. Without Frame.
SU-RSF II-FB	DPM Fiberglass Retail Sump Straight Wall and Flat Bottom. without Frame.
SU-RSF-C	DPM Fiberglass Retail Sump with Cup. Without Frame.
SU-RSFS	DPM Fiberglass Retail Under Dispenser Containment Shallow Dispenser Pan. Customer to Specify size.
SU-RSF-FB	DPM Fiberglass Retail Sump With Flat Bottom. without Frame.

## Retail & Commercial Sumps - Fiberglass Frame



Part #	Description
SU-RFF 2815	DPM Retail Fiberglass Frame for Wayne Vista HS3/V387D or Vista 3/G72 28x15.
SU-RFF 3617	DPM Retail Fiberglass Frame for Gilbarco Encore 36x17.
SU-RFF 4015B	DPM Fiberglass Frame for Bennett Pacific 40x15.
SU-RFF 4015W	DPM Fiberglass Frame for Wayne Ovation 40x15.

## Retail & Commercial Sumps - Stainless Frame



Part #	Description
SU-RFS 2307	DPM Stainless Frame for Gilbarco Legacy 2307. (call for pricing)
SU-RFS 2815	DPM Stainless Frame for Wayne Vista HS3/V387D or Vista 3/G72 28x15.
SU-RFS 3617	DPM Stainless Frame for Gilbarco Encore 36x17.
SU-RFS 3811	DPM Stainless Frame for Vista 4V590 P/U; 595P/U 38x11.
SU-RFS 4015	DPM Stainless Frame for Ovation 40x15.

## Retail & Commercial Sumps - Fiberglass Sump



Part #	Description
SU-CSF	DPM Fiberglass Commercial Under Dispenser Containment Sump without frame.



*"Better by Design"*

## Under Dispenser Sumps

Retail & Commercial Sumps - Fiberglass Frame



Part #	Description
SU-CFF-2307	DPM Commercial Fiberglass Frame (23x07) with conduitless openings on both ends of the frame. For Gilbarco Legacy.
SU-CFF-2412G	DPM Commercial Fiberglass Frame (24x12) with conduitless openings on both ends of the frame. For Gasboy and Atlas Dispensers.

Retail & Commercial Sumps - Fiberglass

# Under Dispenser Containment Accessories



*"Better by Design"*

Stabilizer Bar Assemblies

## Stabilizer Bar Assemblies



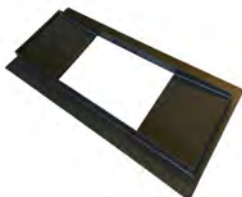
Part #	Description
SU-SBA	DPM Stabilizer Bar Assembly Powder Coated for Retail and Commercial Sumps.
SU-SBA SS	DPM Stabilizer Bar Assembly All Stainless for Retail and Commercial Sumps.

## Sensor Mounting Kits



Part #	Description
SU-SMK	DPM Sensor Mounting Kit for Fiberglass or Poly Sumps, Factory Installed Specify if to be shipped loose for field installation.
SU-SMK-UV	DPM Sensor Mounting Kit for Fiberglass or Poly Sumps, Universal mounting for all Tanks / UDC's.

## Dispenser Adapter Kit



Part #	Description
SU-DAK	DPM Dispenser Adaptor Kit. Custom fabricated per customers specifications.
SU-DAK BP	DPM Dispenser Sump Adaptor Kit. for Bennett Pacific New Dispensers. Steel with 2" rain lip, powder coated. Adapts new dispenser to existing dispenser openings. Complete with one 20 oz. cartridge set of DSG Polysulfide Gasket Material.
SU-DAK WO	DPM Dispenser Sump Adaptor Kit. for Wayne Ovation New Dispensers. Steel with 2" rain lip, powder coated. Adapts new dispenser to existing dispenser openings. Complete with one 32 oz. of DSG Polysulfide Gasket Material.
SU-DAK-GE	DPM Dispenser Sump Adaptor Kit. for Gilbarco Encore New Dispensers. Steel with 2" rain lip, powder coated. Adapts new dispenser to existing dispenser openings. Complete with one 32 oz. of DSG Polysulfide Gasket Material.





*"Better by Design"*

## Under Dispenser Containment Accessories

### Conduit Mounting Brackets



Part #	Description
SU-CMB-1.1	DPM Conduit Mounting Bracket for 3/4"
SU-CMB-1.4	DPM Conduit Mounting Bracket for 1"

Conduit Mounting Brackets

# Aboveground Under Dispenser Containment



*"Better by Design"*

Above Ground Under Dispenser

## Above Ground Under Dispenser Containment ~ Powder Coated



Part #	Description
SU-AGS-2815	DPM Above Ground Under Dispenser Containment 12 gauge Powder Coated. Includes 1 ea UL Listed Shear Valve, and 1 ea Stabilizer Bar Assembly. Specify Dispenser for footprint provided by customer.
SU-AGS 3219	DPM Above Ground Under Dispenser Containment 12 gauge Powder Coated for Wayne Select Dispenser. Includes 1 ea UL Listed Shear Valve, and 1 ea Stabilizer Bar Assembly. Specify Dispenser for footprint provided by customer.

## Above Ground Under Dispenser Containment ~ Powder Coated w/ 1 Float Trip Assembly



Part #	Description
SU-AGS 2030 FTA1	DPM Above Ground Under Dispenser Containment 12 gauge Powder Coated. Includes 1 ea UL Listed Shear Valve, and 1 ea Stabilizer Bar Assembly. Specify Dispenser for footprint provided by customer.
SU-AGS-2815 FTA1	DPM Above Ground Under Dispenser Containment 12 gauge Powder Coated. Includes 1 each Stabilizer Bar Assembly, 1 each Float Trip assembly linked to a UL Listed Shear Valve. Specify Dispenser for footprint provided by customer.
SU-AGS 3219 FTA1	DPM Above Ground Under Dispenser Containment 12 gauge Powder Coated for Wayne Select Dispenser. Includes 1 each Stabilizer Bar Assembly, 1 each Float Trip assembly linked to a UL Listed Shear Valve. Specify Dispenser for footprint provided by customer.

## Above Ground Under Dispenser Containment ~ Powder Coated w/ 2 Float Trip Assembly



Part #	Description
SU-AGS 2030 FTA2	DPM Above Ground Under Dispenser Containment for, includes two Float Trip assemblies linked to a UL listed shear valve.
SU-AGS 3620 FTA2	DPM Above Ground Under Dispenser Containment 12 gauge Powder Coated for Wayne Reliance. Includes 2 each Stainless Steel Stabilizer Bar Assemblies, 2 each Float Trip assemblies linked to UL Listed Shear Valves. Specify Dispenser for footprint provided by customer.

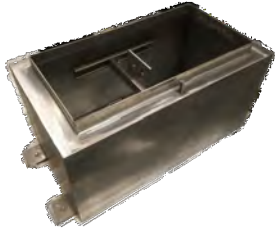




*"Better by Design"*

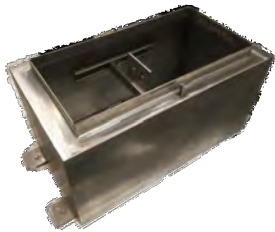
# Aboveground Under Dispenser Containment

## Above Ground Under Dispenser Containment ~ Stainless Steel



Part #	Description
SU-AGS 2815-SS	DPM Above Ground Under Dispenser Containment Stainless Steel for Atlas series dispensers. Includes 1 ea 1-1/2" Shear Valve, and 1 ea Stainless Steel Stabilizer Bar Assembly. Specify Dispenser for footprint provided by customer. Includes
SU-AGS 3620-SS	Above Ground Under Dispenser Containment Stainless Steel for Wayne Reliance. Includes 1 ea. 1-1/2" Shear Valve, and 1 ea. Stainless Steel Stabilizer Bar Assembly. Specify Dispenser for footprint provided by customer.

## Above Ground Under Dispenser Containment ~ Stainless Steel w/ 1 Float Trip Assembly



Part #	Description
SU-AGS 3620-SS FTA1	DPM Above Ground Under Dispenser Containment Stainless Steel for Wayne Reliance. Includes 1 each Stainless Steel Stabilizer Bar Assembly, 1 each Float Trip assembly linked to UL Listed Shear Valve. Specify Dispenser for footprint provided by customer.

## Above Ground Under Dispenser Containment ~ Stainless Steel w/ 2 Float Trip Assembly



Part #	Description
SU-AGS 3620-SS FTA2	DPM Above Ground Under Dispenser Containment Stainless Steel for Wayne Reliance. Includes 2 each Stainless Steel Stabilizer Bar Assemblies, 2 each Float Trip assemblies linked to UL Listed Shear Valves. Specify Dispenser for footprint provided by customer.

Above Ground Under Dispenser

# DEF Fiberglass Under Dispenser Containment



*"Better by Design"*

DEF Sump Combinations

## DEF Sump Combinations



Part #	Description
SU-DEF F-Assy	DPM Fiberglass DEF and Retail Sump Assembly. 1- Commercial Sump with rails, 1- SU SBA Stabilizer Bar Assembly, 1- DEF Shear Valve, 1- UV resistant split lid.

## DEF Shear Valves



Part #	Description
SU-DEF SV	DPM DEF Shear valve with mounting plate for mounting to standard stabilizer Bar Assemblies. All Acetal / Stainless components.



*"Better by Design"*

# Fiberglass Tank Sumps

## Tank Sumps & Accessories



Part #	Description
SU-TSFA-FL-42	DPM Tank Sump Fiberglass Adjustable Burial for 42" collar mount with Friction Fit Lid



Part #	Description
SU-TSFA-ML-42	DPM Tank Sump Fiberglass Adjustable Burial 42" Collar mount with water tight Magnetic Lid



Part #	Description
SU-TSFA-FL-48	DPM Tank Sump Fiberglass Adjustable Burial for 48" collar mount with Friction Fit Lid



Part #	Description
SU-TSFA-ML-48	DPM Tank Sump Fiberglass Adjustable Burial 48" Collar mount with water tight Magnetic Lid

Tank Sumps & Accessories



# Fiberglass Tank Sumps



*"Better by Design"*

Tank Sumps & Accessories ~ Continued

## Tank Sumps & Accessories ~ Continued



Part #	Description
SU-TSFA-FL-BM	DPM Tank Sump Fiberglass Adjustable Burial for Bung Mounting with Friction Fit Lid



Part #	Description
SU-TSFA-ML-BM	DPM Tank Sump Fiberglass Adjustable Burial for Bung mounting with water tight Magnetic Lid



Part #	Description
SU-TKSF-FL-42	DPM Fiberglass Octagonal Tank Sump for 42" collar mount with Friction Fit Lid



Part #	Description
SU-TKSF-MB-ML-42	DPM Fiberglass medium burial Octagonal Tank Sump for 42" Collar mount with water tight Magnetic Lid.



*"Better by Design"*

## Fiberglass Tank Sumps

Tank Sumps & Accessories ~ Continued



Part #	Description
SU-TKSF-FL-48	DPM Fiberglass Octagonal Tank Sump for 48" collar mount with Friction Fit Lid



Part #	Description
SU-TKSF-ML-48	DPM Fiberglass Octagonal Tank Sump for 48" Collar mount with water tight Magnetic Lid



Part #	Description
SU-TKSK-FL-BM	DPM Fiberglass Octagonal Tank Sump for Bung mounting with Friction Fit Lid

Tank Sumps & Accessories ~ Continued

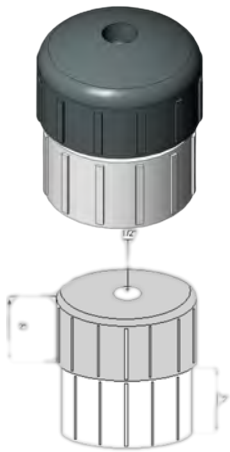
# Fiberglass Tank Sump Accessories



*“Better by Design”*

## Sensor Riser Cap

Sensor Riser Cap



Part #	Description
SU-SRK	DPM Sensor Riser Cap Kit, for interstitial sensor on double wall tanks.

## Sensor Mounting Kits



Part #	Description
SU-SMK	DPM Sensor Mounting Kit for Fiberglass or Poly Sumps, Factory Installed Specify if to be shipped loose for field installation.
SU-SMK-UV	DPM Sensor Mounting Kit for Fiberglass or Poly Sumps, Universal mounting for all Tanks / UDC's.



## Tank Sump Adapter



Part #	Description
SU-TSA	DPM Tank Sump Adaptor Kit for Bung Mounting.





*"Better by Design"*

## Fiberglass Tank Sump Accessories

Tank Sumps & Accessories



Part #	Description
SU-TKSF Ext	DPM Fiberglass Tank Sump Riser Extension Kit. Includes a bonding materials to bond the extension to the sump base. Lid provided with tank sump.

Tank Sumps & Accessories

# Fiberglass Magnetic Lid



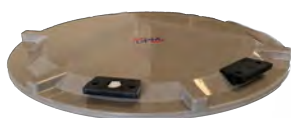
*"Better by Design"*

## Fiberglass Magnetic Lid Retrofit Assemblies



Part #	Description
SU-MAR 34x21	DPM Retrofit Magnetic Attractor. For sump risers with minimum ID of 21" to 22 1/4". Attractor ring is 20 3/4"
SU-MAR 34x23	DPM Retrofit Magnetic Attractor. For sump risers with minimum ID of 22.5" to 23 3/4". Attractor ring is 22 1/2"
SU-MAR 34x26	DPM Retrofit Magnetic Attractor. For sump risers with minimum ID of 25 3/4" to 27". Attractor ring is 25 1/2"
SU-MAR 34x27	DPM Retrofit Magnetic Attractor. For sump risers with minimum ID of 27" to 28 1/2". Attractor ring is 27 3/4"
SU-MAR 34x28	DPM Retrofit Magnetic Attractor. For sump risers with minimum ID of 28" to 29 1/4". Attractor ring is 27 3/4"
SU-MAR 34x30	DPM Retrofit Magnetic Attractor, For sump risers with minimum ID of 29 7/8" to 31". Attractor ring is 29 5/8"
SU-MAR 34x31	DPM Retrofit Magnetic Attractor. For sump risers with minimum ID of 31" to 31 3/4". Attractor ring is 30 3/4"
SU-MAR 34x32	DPM Retrofit Magnetic Attractor. For sump risers with minimum ID of 31 3/4" to 32". Attractor ring is 31 1/2"
SU-MAR 34x33	DPM Retrofit Magnetic Attractor, For sump risers with minimum ID of 33" to 34". Attractor ring is 32 1/4"
SU-MAR 34x36	DPM Retrofit Magnetic Attractor. For sump risers with minimum ID of 35 1/2" to 36 3/4". Attractor ring is 35 1/4"
SU-MAR 34x36W	DPM Magnetic Attractor. For Western Tank sump risers. Attractor ring is 36 5/8"
SU-MAR 34x37	DPM Retrofit Magnetic Attractor. For sump risers with minimum ID of 37 1/4" to 38 1/2". Attractor ring is 37"
SU-MAR 34x38	DPM Retrofit Magnetic Attractor. For sump risers with minimum ID of 38 1/2" to 39 1/2". Attractor ring is 38 1/4"
SU-MAR 34x42	DPM Retrofit Magnetic Attractor. For sump risers with minimum ID of 41 1/2" to 42 3/4". Attractor ring is 41 1/4"
SU-MAR XXXX	DPM Retrofit Magnetic Attractor. Please Provide Measurements For Actual Part Number. This Item Is Just for pricing purposes.
SU-MAR-Custom	DPM Retrofit Magnetic Attractor. (CUSTOM)

## Fiberglass Magnetic Lid



Part #	Description
SU-ML	DPM Magnetic Lid The adapter ring is not included.
SU-MLA Oval	DPM Magnetic Sump Lid with retrofit Magnetic Attractor, Handles & Vapor Vent installed. Includes 12ea. 2" Tech Screws.



*"Better by Design"*

## Transition Sumps

### Transition Sumps - Fiberglass



Part #	Description
SU-TS 24	DPM Fiberglass 24x24x32 Transition Sump with Rails assembled. Specify Mounting GI = Grade Level, AG = Above Grade, BG=Below Grade. Includes powder Coated one piece diamond plate lid. & See accessories for additional options & Pricing.
SU-TS 40	DPM Fiberglass 40x24 Transition Sump with Rails assembled. Specify Mounting GI = Grade Level, AG = Above Grade, BG=Below Grade. Includes powder Coated one piece diamond plate lid. & See accessories for additional options & Pricing.
SU-TS 48	DPM Fiberglass 48x48x48 Transition Sump with Rails assembled. Specify Mounting GI = Grade Level, AG = Above Grade, BG=Below Grade. Includes powder Coated split diamond plate lid. & See accessories for additional options & Pricing.

Transition Sumps - Fiberglass



# Transition Sump Accessories



*"Better by Design"*

Transition Sumps - Fiberglass

## Transition Sumps - Fiberglass



Part #	Description
SU-TS 24 Ext	DPM Fiberglass Extension for 24x24x32 Transition Sump. Allows sump to be buried an additional 24" deep.
SU-TS 48 Ext	DPM Fiberglass Extension for 48x48x48 Transition Sump. allows sump to be buried an additional 24" deep.

## Options/Accessories



Part #	Description
SU-TS-1 1/2WC	DPM Welded coupling 1 1/2" for transition sumps May be added to any transition sump lid. Net price for each coupling item added to selected sump.
SU-TS-1WC	DPM Welded coupling 1" for transition sumps May be added to any transition sump lid. Net price for each coupling item added to selected sump.
SU-TS-2WC	DPM Welded coupling 2" for transition sumps May be added to any transition sump lid. Net price for each coupling item added to selected sump.
SU-TS-3WC	DPM Welded coupling 3" for transition sumps May be added to any transition sump lid. Net price for each coupling item added to selected sump.
SU-TS-4WC	DPM Welded coupling 4" for transition sumps May be added to any transition sump lid. Net price for each coupling item added to selected sump.



Part #	Description
SU-TS-2SS-24	DPM Stainless Skirt 2" tall for 24x24 Transition sumps. This is an adder item to net price for 24x24x36 transition sumps.
SU-TS-2SS-36	DPM Stainless Skirt 2" tall for 36x36 Transition sumps. This is an adder item to net price for 36x36x36 transition sumps.
SU-TS-2SS-48	DPM Stainless Skirt 2" tall for 48x48 Transition sumps. This is an adder item to net price for 48x48x48 transition sumps.
SU-TS-2SS-60	DPM Stainless Skirt 2" tall for 60x60 Transition sumps. This is an adder item to net price for 60x60x60 transition sumps.



*"Better by Design"*

## Vent Sumps

Vent Sumps, Commercial, Retail



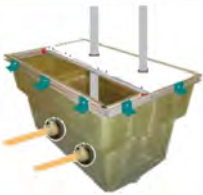
Part #	Description
SU-VVR	DPM Rack for VVR series vapor vent sumps specify sumps size (40x24 or 24x24) Includes pipe clamp brackets for up to 5 risers.

Vent Sumps, Commercial, Retail 24 x 24



Part #	Description
SU-VVS-24-F	DPM Fiberglass Vapor/Vent sump 24x24. Includes Water Proof Split Lid, DSG Gasket material.

Vent Sumps, Commercial, Retail 40 x 24



Part #	Description
SU-VVS-40-F	DPM Fiberglass Vapor/Vent sump 40x24. Includes Water Proof Split Lid, DSG Gasket material.

Vent Sumps, Commercial, Retail

# Fiberglass Penetration Fittings



*"Better by Design"*

Fiberglass Test Reducers with Stainless Steel Air Test Valve

## Fiberglass Test Reducers with Stainless Steel Air Test Valve



Part #	Description
PF-FGR 2.7x2.4 ASS	DPM Fiberglass Penetration Reducer for 2" LCX Pipe with Stainless Air Test Port.
PF-FGR 3.8x3.6 ASS	DPM Fiberglass Penetration Reducer for 3" LCX Pipe with Stainless Air Test Port.
PF-FGR 3.6x2.4 ASS	DPM Fiberglass Penetration Reducer for 3" FRP to 2" FRP Pipes with Stainless Air Test Port.
PF-FGR 4.5x3.6 ASS	DPM Fiberglass Penetration Reducer for 4" FRP to 3" FRP Pipes with Stainless Air Test Port.

## Fiberglass Threaded Riser Pipe



Part #	Description
PF-FGR-4Bx4M	DPM Fiberglass RTIIA Riser Pipe Adaptor 4" Bell x Male.

## Fiberglass Threaded Penetrations for Single and Double Wall Sumps



Part #	Description
PF-FGT-2.5-1.275	DPM Threaded Fiberglass Penetration Fitting for 32mm Pipe.
PF-FGT-2.5-1.415	DPM Threaded Fiberglass Penetration Fitting for 1" PVC Conduits.
PF-FGT-2.5-1.515	DPM Threaded Fiberglass Penetration Fitting for 1.5" OD Pipes.
PF-FGT-2.5-1.155	DPM Threaded Fiberglass Penetration Fitting for 3/4" PVC Conduits.
PF-FGT-2.5-1.565	DPM Threaded Fiberglass Penetration Fitting for 1" DoubleTrac Pipe.



Part #	Description
PF-FGT-4.5-1.915	DPM Threaded Fiberglass Penetration Fitting for 1-1/2" Rigid Pipe.
PF-FGT-4.5-2.015	DPM Threaded Fiberglass Penetration Fitting for ..1 1/2" Flex Pipes With 2" OD.
PF-FGT-4.5-2.315	DPM Threaded Fiberglass Penetration Fitting for Omegaflex 1 1/2" Pipe.
PF-FGT-4.5-2.390	DPM Threaded Fiberglass Penetration Fitting for 2" Rigid Pipe, 2" Ameron 3000L, and 2" Smith RT II.
PF-FGT-4.5-2.515	DPM Threaded Fiberglass Penetration Fitting for 2.5" OD Pipes.
PF-FGT-4.5-2.605	DPM Threaded Fiberglass Penetration Fitting for Ameron 2" LCX Pipe.
PF-FGT-4.5-2.820	DPM Threaded Fiberglass Penetration Fitting for Brugg 1.5" Pipe.





*"Better by Design"*

# Fiberglass Penetration Fittings

Fiberglass Threaded Penetrations for Single

## Fiberglass Threaded Penetrations for Single and Double Wall Sumps ~ Continued

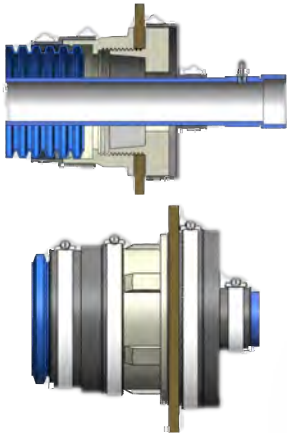


Part #	Description
PF-FGT-4.5-2.945	DPM Threaded Fiberglass Penetration Fitting for Omegaflex 2" Pipe.
PF-FGT-4.5-3.015	DPM Threaded Fiberglass Penetration Fitting for 75MM Pipes.
PF-FGT-4.5-3.515	DPM Threaded Fiberglass Penetration Fitting for 90MM, 3" Rigid and Ameron 3000L Pipe.
PF-FGT-4.5-3.575	DPM Threaded Fiberglass Penetration Fitting for 3" Smith RT II.



Part #	Description
PF-FGT-6.0-3.715	DPM Threaded Fiberglass Penetration Fitting for 3" LCX Pipe.
PF-FGT-6.0-4.415	DPM Threaded Fiberglass Penetration Fitting for 110MM Pipes.
PF-FGT-6.0-4.515	DPM Threaded Fiberglass Penetration Fitting for 4" Nominal Pipes.
PF-FGT-6.0-4.715	DPM Threaded Fiberglass Penetration Fitting for 4" LCX Pipe.
PF-FGT-6.0-4.940	DPM Threaded Fiberglass Penetration Fitting for 125mm OD Pipe.

## Fiberglass Threaded Penetrations for Single and Double Wall Sumps for Corrugated Ducts



Part #	Description
PF-FGT-4.5-APX-40-2.0	DPM Threaded Fiberglass Penetration Fitting With 4" OPW APX 40 Corrugated Duct and 1.5" OPW Flex Pipe. Includes: 1 ea- PF-FGT-4.5 1 ea-PF-RA 6.3x2.0 Short 1 ea-PF-RA 5.2x5.0 1 ea-PF-CDS-N
PF-FGT-4.5-APX-40-2.5	DPM Threaded Fiberglass Penetration Fitting With 4" OPW APX 40 Corrugated Duct and 2" OPW Flex Pipe. Includes: 1 ea- PF-FGT-4.5 1 ea-PF-RA 6.3x2.5 Short 1 ea-PF-RA 5.2x5.0 1 ea-PF-CDS-N

# Penetration Fittings



*"Better by Design"*

## Single Sided Threaded Penetration Fittings



Part #	Description
PF-B2-1.1	DPM B2 Single Sided for 3/4" Rigid Conduits. Includes Clamp #16.
PF-B2-1.3	DPM B2 Single Sided for 32mm Conduits, Includes Clamp #20.
PF-B2-1.4	DPM B2 Single Sided for 1" Rigid Conduits. Includes Clamp #20.
PF-B2-41	DPM B2 Single Sided for 1" Rigid Conduits with insert for 3/4" Conduit. Includes Clamp #20.



Part #	Description
PF-B3.5-1.5	DPM B3.5 Single Sided for 1.3"-1.5" OD Includes Clamp #24.
PF-B3.5-1.6	DPM B3.5 Single Sided for 1.5"-1.6" OD & 40mm pipe , Includes Clamp #24.
PF-B3.5-1.7	DPM B3.5 Single Sided for 1.6"-1.7"OD 1 1/4" pipe , Includes Clamp #24.
PF-B3.5-1.9	DPM B3.5 Single Sided for 1 1/2" Steel Pipe Includes Clamp #32.
PF-B3.5-2.0	DPM B3.5 Single Sided for 1 1/2" flex pipe, Includes Clamp #40.
PF-B3.5-2.2	DPM B3.5 Single Sided for pipes with an OD of 2.2" size 40 clamp.
PF-B3.5-2.4	DPM B3.5 Single Sided for 2" FRP, Includes Clamp #40.
PF-B3.5-2.5	DPM B3.5 Single Sided for 2" nominal flex, 63mm pipe , size 40 clamp.
PF-B3.5-2.7	DPM B3.5 Single Sided for 2" LCX, Includes Clamp #44.



Part #	Description
PF-B5-2.7	DPM B5 Single Sided Bulkhead for 2-1/2" Flex Pipes or Ameron 2" LCX.
PF-B5-2.9	DPM B5 Single Sided Bulkhead for 2-1/2" Nominal Pipe.
PF-B5-3.0	DPM B5 Single Sided for 75 mm Pipes.
PF-B5-3.3	DPM B5 Single Sided Bulkhead for Custom Pipes 3.3" OD.
PF-B5-3.6	DPM B5 Single Sided Bulkhead for 3" Flex, 3" Steel or FRP, 90 mm Pipes.
PF-B5-3.8	DPM B5 Single Sided Bulkhead for 3" LCX.



*"Better by Design"*

# Penetration Fittings

## Single Sided Threaded Penetration Fittings ~ Continued



Part #	Description
PF-B6-4.4	DPM B6 Single Sided Bulkhead for 110mm pipes.
PF-B6-4.5	DPM B6 Single Sided Bulkhead for 4" FRP.
PF-B6-4.8	DPM B6 Single Sided Bulkhead for 4" LCX.
PF-B6-5.0	DPM B6 Single Sided Bulkhead for 125mm Pipes.

## Single Sided Threaded Penetration Fittings W/Air Test Valve



Part #	Description
PF-B3.5-2.7x2.4 A	DPM B3.5 Single Sided for 2" LCX Pipe 2.7x2.4 with Air Test Valve, Includes Clamps #44 & #40.
PF-B3.5-40x32 A	DPM B3.5 Single Sided for 40mm pipe over 32mm Pipe with air test port , Includes Clamp #24.
PF-B3.5-63x50 A	DPM B3.5 Single Sided for 63mm pipe over 50mm Pipe with air test port , Includes Clamp #24.
PF-B5-3.6x2.4 A	DPM B5 Single Sided Bulkhead for 3" FRP over 2" FRP with Air Test valve Pipes.
PF-B5-3.8x3.5 A	DPM B5 Single Sided Bulkhead for 3" LCX with Air Test valve Pipes.
PF-B5-75x63A	DPM B5 Single Sided Bulkhead for 75mm over 63mm with Air Test valve Pipes.
PF-B5-90x75 A	DPM B5 Single Sided Bulkhead for 90mm over 75mm with Air Test valve Pipes.

## Double Sided Threaded Penetrations includes Rock Guard



Part #	Description
PF-B2D-1.1	DPM B2 Double Sided for 3/4" Rigid Conduits includes 3 clamps 2#16 & 1#40
PF-B2D-1.3	DPM B2 Double Sided for 32mm Conduits includes 3 clamps 2#16 & 1#40
PF-B2D-1.4	DPM B2 Double Sided for 1" Rigid Conduits & APT XP-100-D includes 3 clamps 2#20 & 1#40
PF-B2D-41	DPM B2 Double Sided with insert, for 3/4" Rigid Conduits & APT XP-100-D includes 3 clamps 2#20 & 1#40

# Penetration Fittings



*"Better by Design"*

Double Sided Threaded Penetrations

Double Sided Threaded Penetrations includes Rock Guard ~ Continued



Part #	Description
PF-B3.5D-1.5	DPM B3.5 Double Sided for 1.3" OD to 1.5" OD Includes: PF-B3.5-1.5 PF RA 5.0x1.5 Reducer 1 clamp #80 2 Clamps #32
PF-B3.5D-1.6	DPM B3.5 Double Sided for 1.5" OD to 1.6" OD & 40mm Pipes Includes: PF-B3.5-1.6 Penetration PF-RA 5.0x1.6 Reducer 1 Clamp #80 2 clamps #32
PF-B3.5D-1.7	DPM B3.5 Double Sided for 1.6" OD to 1.7" OD & 1 1/4" Nominal Pipes Includes: PF-B3.5-1.7 Penetration PF-RA 5.0x1.7 Reducer 1 Clamp #80 2 Clamps #32
PF-B3.5D-1.9	DPM B3.5 Double Sided for 1 1/2" Nominal Pipes Includes: PF-B3.5-1.9 Penetration PF-RA 5.0x1.9 Reducer 1 Clamp #80 2 Clamps #32
PF-B3.5D-2.0	DPM B3.5 Double Sided for 2" Flex Pipe Includes: PF-B 3.5-2.0 Penetration PF-RA 5.0x2.0 Reducer 1 Clamp #80 2 Clamps #32
PF-B3.5D-2.2	DPM B3.5 Double Sided for Pipes with an OD of 2.1" to 2.2" OD Includes: PF-B3.5x2.2 Penetration PF-RA 5.0x2.2 Reducer 1 Clamp #80 2 Clamps #32
PF-B3.5D-2.4	DPM B3.5 Double Sided for 63mm Pipe, Includes: PF B3.5x2.5 Penetration PF RA 5.0x2.5 Reducer 1 Clamp #80 2 Clamps #40
PF-B3.5D-2.5	DPM B3.5 Double Sided for 63mm Pipe, Includes: PF B3.5x2.5 Penetration PF RA 5.0x2.5 Reducer 1 Clamp #80 2 Clamps #40
PF-B3.5D-2.7	DPM B3.5 Double Sided for 2" LCX Pipe, Includes: PF-B3.5x2.7 Penetration PF-RA 5.0x2.7 Reducer 1 Clamp #80 2 Clamps #44



*"Better by Design"*

# Penetration Fittings

Double Sided Threaded Penetrations includes Rock Guard ~ Continued



Part #	Description
PF-B5D-2.7	DPM B5 Double Sided Bulkhead for 2-1/2" Flex Pipes or Ameron 2" LCX. Includes: PF-B5x2.7 Penetration PF-RA 6.3x2.7 Reducer 1 clamp #104 2 clamps #44
PF-B5D-2.9	DPM B5 Double Sided Bulkhead for 2-1/2" Nominal Pipe Includes: PF-B5-2.9 Penetration PF RA 6.3x2.9 Reducer 1 Clamp #104 2 Clamps #48
PF-B5D-3.0	DPM B5 Double Sided Bulkhead for 75mm Pipes Includes: PF-B5-3.0 Penetration PF-RA-6.3x3.0 Reducer 1 Clamp #104 2 Clamps #48
PF-B5D-3.3	DPM B5 Double Sided Bulkhead for Custom Pipes with 3.3" OD Includes: PF-B5-3.3 Penetration PF-RA 6.3x3.3 Reducer 1 Clamp #104 2 Clamps #60
PF-B5D-3.6	DPM B5 Double Sided for 3" Flex, 3" Steel or FRP, 90 mm Pipes Includes: PF-B5-3.6 Penetration PF-RA 6.3x3.6 Reducer 1 Clamp #104 2 Clamps #60
PF-B5D-3.8	DPM B5 Double Sided for 3" LCX Pipe Includes: PF-B5-3.8 Penetration PF-RA 6.3x3.8 reducer 1 Clamp #104 2 Clamps #60

Double Sided Studded Penetrations



Part #	Description
PF-4D-1.1	DPM 4 Stud Penetration Double Sided for 3/4" Rigid Conduits, Includes 1 4DM-1.1, 1 4SDF-1.1, 1 bag of 4 Flange nuts, 1 bag of 4 Stud Seals, 2 size 16 clamps, Instructions.
PF-4D-1.3	DPM 4 Stud Penetration Double Sided for 32mm Pipe, Includes 1 4DM-1.3, 1 4SDF-1.3, 1 bag of 4 Flange nuts, 1 bag of 4 Stud Seals, 2 size 20 clamps, Instructions.
PF-4D-1.4	DPM 4 Stud Penetration Double Sided for 1" Rigid Conduits, Includes 1 4DM-1.4, 1 4SDF-1.4, 1 bag of 4 Flange nuts, 1 bag of 4 Stud Seals, 2 size 20 clamp, Instructions.
PF-4D-41	DPM 4 Stud Penetration Double Sided 1" Conduit fitting with insert for 3/4", Includes 1 4DM-1.4, 1 4SDF-1.4, 1 IA 1.4x1.1 insert, 1 bag of 4 Flange nuts, 1 bag of 4 Stud Seals, 2 size 20 clamp, instructions



## Double Sided Studded Penetrations ~Continued



Part #	Description
PF-8D-1.5	DPM 8 Stud Penetration Double Sided for 40 mm pipes, Includes - 1 8DM-1.5, 1 8SDF-1.5, 2 size 24 clamps, 1 bag of 8 Flange nuts, 1 bag of 8 Stud Seals, Instructions.
PF-8D-1.6	DPM 8 Stud Penetration Double Sided for 40 mm pipes, Includes - 1 8DM-1.6, 1 8SDF-1.6, 2 size 24 clamps, 1 bag of 8 Flange nuts, 1 bag of 8 Stud Seals Instructions.
PF-8D-1.7	DPM 8 Stud Penetration Double Sided for 1-1/4 Rigid Conduits or Steel & APT P100-SC, Includes - 1 8DM-1.7, 1 8SDF-1.7, 2 size 28 clamps, 1 bag of 8 Flange nuts, 1 bag of 8 Stud Seals, Instructions.
PF-8D-1.9	DPM 8 Stud Penetration Double Sided for 1-1/2" Rigid Conduits or Steel or FRP Pipes, Includes - 1 8DM-1.9, 1 8SDF-1.9, 2 size 32 clamps, 1 bag of 8 Flange nuts, Instructions.
PF-8D-2.0	DPM 8 Stud Penetration Double Sided Alcryn for 1-1/2" Flex or 50 mm Pipes, Includes - 1 8DM-2.0, 1 8SDF-2.0, 2 size 32 clamp, 1 bag of 8 Flange nuts, 1 bag of 8 Stud Seals Instructions.
PF-8D-2.2	DPM 8 Stud Penetration Double Sided for TCI PP 1503 pipe, Includes - 1 8DM-2.2, 1 8SDF-2.2, 2 size 36 clamps, 1 bag of 8 Flange nuts, 1 bag of 8 Stud Seals, Instructions.
PF-8D-2.4	DPM 8 Stud Penetration Double Sided for 2" Rigid Conduits or Steel or FRP Pipes, Includes - 1 8DM-2.4, 1 8SDF-2.4, 2 size 40 clamps, 1 bag of 8 Flange nuts, 1 bag of 8 Stud Seals Instructions.
PF-8D-2.5	DPM 8 Stud Penetration Double Sided for 63MM Pipe Includes - 1 8DM-2.5, 1 8SDF-2.5, 2 size 40 clamps, 1 bag of 8 Flange nuts, 1 bag of 8 Stud seals Instructions.
PF-8D-2.7	DPM 8 Stud Penetration Double Sided for 2-1/2" Flex Pipes or Ameron 2" LCX, Includes - 1 8DM-2.7, 1 8SDF-2.7, 2 size 44 clamps, 1 bag of 8 Flange nuts, 1 bag of 8 Stud Seals, Instructions.
PF-8D-2.9	DPM 8 Stud penetration Double Sided for TCI or APT P200-SC Pipes, Includes - 1 8DM-2.9, 1 8SDF-2.9, 2 size 48 clamps, 1 bag of 8 Flange nuts, 1 bag of 8 Stud Seals, Instructions.
PF-8D-3.0	DPM 8 Stud Penetration Double Sided for 75 mm Pipes, Includes - 1 8DM-3.0, 1 8SDF-3.0, 2 size 48 clamps, 1 bag of 8 Flange nuts, 1 bag of 8 Stud Seals, Instructions.
PF-8D-3.3	DPM 8 Stud Penetration Double Sided for 2" Brugg Pipes, Includes - 1 8DM-3.3, 1 8SDF-3.3, 2 size 48 clamp, 1 bag of 8 Flange Nuts, 1 bag of 8 stud seals, Instructions.
PF-8D-3.6	DPM 8 Stud Penetration Double Sided for 3" Flex, 3" Steel or FRP, 90 mm Pipes, Includes - 1 8DM-3.6, 1 8SDF-3.6, 2 size 60 clamps, 1 bag of 8 Flange nuts, 1 bag of 8 stud seals, Instructions.



*"Better by Design"*

# Penetration Fittings

## Double Sided Studded Penetrations ~ Continued



Part #	Description
PF-10D-3.6	DPM 10 Stud Penetration, Double Sided for 3" Flex, 3" Steel or FRP, 90 mm Pipes.
PF-10D-3.8	DPM 10 Stud Penetration, Double Sided for Ameron 3" LCX or APT V300-SCN & R300-SCN.
PF-10D-4.4	DPM 10 Stud Penetration, Double Sided for 110 mm Pipe, 1-10DM-4.4, 1-10SDF-4.4, 2 size 72 clamps, 1 bag of 10 Flange Nuts, 1 bag of 10 stud seals instructions.
PF-10D-4.5	DPM 10 Stud Penetration, Double Sided for 4" Rigid Conduit, Steel or FRP Pipes, instructions.
PF-10D-4.6x2.0	DPM 10 Stud Penetration, Double Sided for 4" Corrugated Ducted with 1/2" Flex Pipes, Includes: 1 ea. 10DM-4.8 Back Plate 1 ea. 10SDF-4.6x2.0 Front Plate 1 ea. Corrugated Duct Seal, Instructions
PF-10D-4.6x2.5	DPM 10 Stud Penetration, Double Sided for 4" Corrugated Ducted with 2" Flex Pipes, Includes: 1 ea. 10DM-4.8 Back Plate 1 ea. 10SDF-4.6x2.5 Front Plate 1 ea. Corrugated Duct Seal, Instructions
PF-10D-4.6x2.7	DPM 10 Stud Penetration, Double Sided for 4" Corrugated Ducted with 2.7" OD Pipes, Instructions.
PF-10D-4.8	DPM 10 Stud Penetration, Double Sided for Ameron 4" LCX Pipe, Instructions.
PF-10D-5.0	DPM 10 Stud Penetration, Double Sided for 125 mm Pipe, Instructions.



Part #	Description
PF-12D-5.2	DPM 12 Stud penetration, Double Sided for 130 mm Pipes, Instructions.
PF-12D-6.3	DPM 12 Stud Penetration, Double Sided for 160 mm Pipes, Instructions.
PF-12D-6.7	DPM 12 Stud Penetration, Double Sided for 6" Rigid Conduit, Steel or IPS Pipes, Instructions.
PF-12D-6.7x4.5	DPM 12 Stud Penetration, Double Sided for 6" FRP over 4" FRP, Instructions.

## Double Sided Studded Penetrations - Filled Applications



Part #	Description
PF-4F-1.1	DPM 4 Stud Penetration, Filled for 3/4" Rigid Conduits, instructions.
PF-4F-1.4	DPM 4 Stud Penetration, Filled for 1" Rigid Conduit, instructions.

# Penetration Fittings



*"Better by Design"*

Double Sided Studded Penetrations - Filled

## Double Sided Studded Penetrations - Filled Applications ~ Continued



Part #	Description
PF-8F-2.0	DPM 8 Stud Penetration, Filled, for 1-1/2" Flex or 50 mm Pipes, Instructions.
PF-8F-2.4	DPM 8 Stud Penetration, Filled, for 2" Rigid Conduits or Steel or FRP, Instructions.
PF-8F-2.5	DPM 8 Stud Penetration, Filled for 2" Flex or 63 mm Pipes, Instructions.
PF-8F-2.7	DPM 8 Stud Penetration, Filled, for 2-1/2" Flex Pipes or Ameron 2" LCX, Instructions.
PF-8F-3.0	DPM 8 Stud Penetration, Filled, for 75 mm Pipes, Instructions.
PF-8F-3.6	DPM 8 Stud Penetration, Filled, for 3" Flex, 3" Steel or FRP, 90 mm Pipes, Instructions.



Part #	Description
PF-10F-3.6	DPM 10 Stud Penetration, Filled, for 3" FRP and 90 mm Pipes, Instructions.
PF-10F-3.8	DPM 10 Stud Penetration, Filled, for Ameron 3" LCX or APT V300-SCN & R300-SCN, Instructions.
PF-10F-4.4	DPM 10 Stud Penetration, Filled, for 110 mm Pipe, Instructions.
PF-10F-4.5	DPM 10 Stud Penetration, Filled, for 4" Rigid Conduit, Steel or FRP Pipes, Instructions.
PF-10F-4.6x2.0	DPM 10 Stud Penetration, Filled, for 4" corrugated Ducting for 2.0" OD flex pipe. 1 ea. 10F-4.8 Back Plate 1 ea. 10SDF-4.6x2.0 Front Plate 1 ea. Corrugated Duct Seal, Instructions
PF-10F-4.6x2.5	DPM 10 Stud Penetration, Filled, for 4" corrugated Ducting for 2.5" OD flex pipe. 1 ea. 10F-4.8 Back Plate 1 ea. 10SDF-4.6x2.5 Front Plate 1 ea. Corrugated Duct Seal, Instructions
PF-10F-4.8	DPM 10 Stud Penetration, Filled, for Ameron 4" LCX Pipe, Instructions.
PF-10F-5.0	DPM 10 Stud Penetration, Filled, for 125 mm Pipes, Instructions.

## Single Sided Studded Penetrations - Inverted Style



Part #	Description
PF-4S-1.1	DPM 4 Stud Penetration Single Sided for 3/4" Rigid Conduits, Includes 1 4DM-1.1, 1 4SFP, 1 bag of 4 stud nuts, 1 size 16 clamp, instructions.
PF-4S-1.4	DPM 4 Stud Penetration Single Sided for 1" Rigid Conduits, Includes 1 4DM-1.4, 1 4SFP, 1 bag of 4 stud nuts, 1 size 20 clamp, instructions.
PF-4S-41	DPM 4 Stud Penetration Single Sided 1" Conduit fitting with insert for 3/4", Includes 1 4DM-1.4, 1 4SFP, 1 IA 1.4x1.1 insert, 1 bag of 4 stud nuts, 1 size 20 clamp, instructions.
PF-4S-419	DPM 4 Stud Penetration Single Sided 1" Conduit fitting with inserts for 3/4" and 1/2", Includes 1 4DM-1.4, 1 4SFP, 1 IA 1.4x1.1 insert, 1 IA 1.4x.9, 1 bag of 4 stud nuts, 1 size 20 clamp, instructions.



*"Better by Design"*

# Penetration Fittings

## Single Sided Studded Penetrations - Inverted Style ~ Continued



Part #	Description
PF-8S-1.5	DPM 8 Stud Penetration Single Sided for 40 mm pipes, Includes - 1 8DM-1.5, 1 8SFP, 1 size 24 clamp, 1 bag of 8 stud nuts, Instructions.
PF-8S-1.6	DPM 8 Stud Penetration Single Sided for 40 mm pipes, Includes - 1 8DM-1.6, 1 8SFP, 1 size 24 clamp, 1 bag of 8 stud nuts, Instructions.
PF-8S-1.7	DPM 8 Stud Penetration Single Sided Alcryn for 1-1/4" Rigid Conduits or Steel & APT P100-SC, Includes - 1 8DM-1.7, 1 8SFP, 1 size 28 clamp, 1 bag of 8 stud nuts, Instructions.
PF-8S-1.9	DPM 8 Stud Penetration Single Sided for 1-1/2" Rigid Conduits or Steel or FRP Pipes, Includes - 1 8DM-1.9, 1 8SFP, 1 size 32 clamp, 1 bag of 8 stud nuts, Instructions.
PF-8S-2.0	DPM 8 Stud Penetration Single Sided for 1-1/2" Flex or 50 mm Pipes, Includes - 1 8DM-2.0, 1 8SFP, 1 size 32 clamp, 1 bag of 8 stud nuts, Instructions.
PF-8S-2.2	DPM 8 Stud Penetration Single Sided for TCI PP 1503 pipe, Includes - 1 8DM-2.2, 1 8SFP, 1 size 36 clamp, 1 bag of 8 stud nuts, Instructions.
PF-8S-2.4	DPM 8 Stud Penetration Single Sided for 2" Rigid Conduits or Steel or FRP Pipes, Includes - 1 8DM-2.4, 1 8SFP, 1 size 40 clamp, 1 bag of 8 stud nuts, Instructions.
PF-8S-3.6	DPM 8 Stud Penetration Single Sided for 3" Flex, 3" Steel or FRP, 90 mm Pipes, Includes - 1 8DM-3.6, 1 8SFP, 1 size 60 clamp, 1 bag of 8 stud nuts, Instructions.
PF-8S-3.3	DPM 8 Stud Penetration Single Sided for 2" Brugg Pipes, Includes - 1 8DM-3.0, 1 8SFP, 1 size 48 clamp, 1 bag of 8 stud nuts, Instructions.
PF-8S-3.0	DPM 8 Stud Penetration Single Sided for 75 mm Pipes, Includes - 1 8DM-3.0, 1 8SFP, 1 size 48 clamp, 1 bag of 8 stud nuts, Instructions.
PF-8S-2.9	DPM 8 Stud penetration Single Sided for TCI or APT P200-SC Pipes, Includes - 1 8DM-2.9, 1 8SFP, 1 size 48 clamp, 1 bag of 8 stud nuts, Instructions.
PF-8S-2.7	DPM 8 Stud Penetration Single Sided for 2-1/2" Flex Pipes or Ameron 2" LCX, Includes - 1 8DM-2.7, 1 8SFP, 1 size 44 clamp, 1 bag of 8 stud nuts, Instructions.
PF-8S-2.5	DPM 8 Stud Penetration Single Sided for 63MM Pipe Includes - 1 8DM-2.5, 1 8SFP, 1 size 40 clamp, 1 bag of 8 stud nuts, Instructions.



Part #	Description
PF-10S-3.6	DPM 10 Stud Penetration, Single Sided for 3" Flex, 3" Steel or FRP, 90 mm Pipes.
PF-10S-3.8	DPM 10 Stud Penetration, Single Sided for Ameron 3" LCX or APT V300-SCN & R300-SCN.
PF-10S-4.4	DPM 10 Stud Penetration, Single Sided for 110 mm Pipe, instructions.
PF-10S-4.5	DPM 10 Stud Penetration, Single Sided for 4" Rigid Conduit, Steel or IPS Pipes, Instructions.
PF-10S-4.6x2.0	DPM 10 Stud Penetration, Single Sided for 4" Corrugated Ducted with 1/2" Flex Pipes, includes 1 ea. 10DM-4.6x2.0 1 ea. 10SFP 1 ea. Corrugated Duct Seal, Instructions.

# Penetration Fittings



*"Better by Design"*

## Single Sided Studded Penetrations - Inverted Style ~ Continued



Part #	Description
PF-10S-4.6x2.5	DPM 10 Stud Penetration, Single Sided for 4" Corrugated Ducted with 2" Flex Pipes, includes 1 ea. 10DM-4.6x2.5 1 ea. 10SFP 1 ea. Corrugated Duct Seal, Instructions.
PF-10S-4.6x2.7	DPM 10 Stud Penetration, Single Sided for 4" Corrugated Ducted with 1.5" AEP Pipe, Instructions.
PF-10S-4.8	DPM 10 Stud Penetration, Single Sided for Ameron 4" LCX Pipe, Instructions.
PF-10S-5.0	DPM 10 Stud Penetration, Single Sided for 125 mm Pipe, Instructions.



Part #	Description
PF-12S-5.2	DPM 12 Stud penetration, Single Sided for 130 mm Pipes, Instructions.
PF-12S-6.3	DPM 12 Stud Penetration, Single Sided for 160 mm Pipes, Instructions.
PF-12S-6.7	DPM 12 Stud Penetration, Single Sided for 6" Rigid Conduit, Steel or IPS Pipes, Instructions.
PF-12S-6.7x4.5	DPM 12 Stud Penetration, Single Sided for 6" FRP over 4' FRP, Instructions.

## Single Sided Studded Penetrations - Traditional Style



Part #	Description
PF-T4S-1.1	DPM 4 Stud Penetration Single Sided for 3/4" Rigid Conduits, Includes 1 4S, 1 4SDF-1.1, 1 bag of 4 Flange nuts, 1 bag of 4 Stud Seals, 1 size 16 clamp, instructions.
PF-T4S-1.3	DPM 4 Stud Penetration Single Sided for 32mm Pipe, Includes 1 4S, 1 4SDF-1.3, 1 bag of 4 Flange nuts, 1 bag of 4 Stud Seals, 1 size 20 clamp, instructions.
PF-T4S-1.4	DPM 4 Stud Penetration Single Sided 1" Conduit fitting, Includes 1 4S, 1 4SDF-1.4, and 1 bag of 4 Flange nuts, 1 bag of 4 Stud Seals, 1 size 20 clamp, instructions.
PF-T4S-41	DPM Traditional 4 Stud Penetration Single Sided 1" Conduit fitting with insert for 3/4", Includes 1 4S, 1 4SDF-1.4, 1 IA 1.4x1.1 insert, 1 bag of 4 Flange nuts, 1 bag of 4 Stud Seals, 1 size 20 clamp, Instructions.

Part #	Description
PF-T8S-1.5	DPM 8 Stud Penetration Single Sided for 40 mm pipes, Includes - 1 8S, 1 8SDF-1.5, 1 size 24 clamp, 1 bag of 8 Flange nuts, 1 bag of 8 Stud Seals, Instructions.
PF-T8S-1.6	DPM 8 Stud Penetration Single Sided for 40 mm pipes, Includes - 1 8S, 1 8SDF-1.6, 1 size 24 clamp, 1 bag of 8 Flange nuts, 1 bag of 8 Stud Seals, Instructions.
PF-T8S-1.7	DPM 8 Stud Penetration Single Sided for 1-1/4 Rigid Conduits or Steel & APT P100-SC, Includes - 1 8S, 1 8SDF-1.7, 1 size 28 clamp, 1 bag of 8 Flange nuts, 1 bag of 8 Stud Seals, Instructions.





*"Better by Design"*

# Penetration Fittings

## Single Sided Studded Penetrations - Traditional Style ~ Continued



Part #	Description
PF-T8S-1.9	DPM 8 Stud Penetration Single Sided for 1.5" Pipes, Includes - 1 8S, 1 8SDF-1.9, 1 size 32 clamp, 1 bag of 8 Flange nuts, 1 bag of 8 Stud Seals, Instructions.
PF-T8S-2.0	DPM 8 Stud Penetration Single Sided for 1.5" Pipes, Includes - 1 8S, 1 8SDF-2.0, 1 size 32 clamp, 1 bag of 8 Flange nuts, 1 bag of 8 Stud Seals, Instructions.
PF-T8S-2.2	DPM 8 Stud Penetration Single Sided for TCI PP 1503 pipe, Includes - 1 8S, 1 8SDF-2.2, 1 size 36 clamp, 1 bag of 8 Flange nuts, 1 bag of 8 Stud Seals, Instructions.
PF-T8S-2.4	DPM 8 Stud Penetration Single Sided for 2" Rigid Conduits or Steel or FRP Pipes, Includes - 1 8S, 1 8SDF-2.4, 1 size 40 clamp, 1 bag of 8 Flange nuts, 1 bag of 8 Stud Seals, Instructions.
PF-T8S-2.5	DPM 8 Stud Penetration Single Sided for 63MM Pipe Includes - 1 8S, 1 8SDF-2.5, 1 size 40 clamp, 1 bag of 8 Flange nuts, 1 bag of 8 Stud Seals, Instructions.
PF-T8S-2.7	DPM 8 Stud Penetration Single Sided for 2-1/2" Flex Pipes or Ameron 2" LCX, Includes - 1 8S, 1 8SDF-2.7, 1 size 44 clamp, 1 bag of 8 Flange nuts, 1 bag of 8 Stud Seals Instructions.
PF-T8S-2.9	DPM 8 Stud Penetration Single Sided for 2-1/2" Steel Pipe, Includes - 1 8S, 1 8SDF-2.9, 1 size 48 clamp, 1 bag of 8 Flange nuts, 1 bag of 8 Stud Seals Instructions.
PF-T8S-3.0	DPM 8 Stud Penetration Single Sided for 75 mm Pipes, Includes - 1 8S, 1 8SDF-3.0, 1 size 48 clamp, 1 bag of 8 Flange nuts, 1 bag of 8 Stud Seals Instructions.
PF-T8S-3.3	DPM 8 Stud Penetration Single Sided for 2" Brugg Pipes, Includes - 1 8S, 1 8SDF-3.0, 1 size 48 clamp, 1 bag of 8 Flange nuts, 1 bag of 8 Stud Seals, Instructions.
PF-T8S-3.6	DPM 8 Stud Penetration Single Sided for 3" Flex, 3" Steel or FRP, 90 mm Pipes, Includes - 1 8S, 1 8SDF-3.6, 1 size 60 clamp, 1 bag of 8 Flange nuts, 1 bag of 8 Stud Seals Instructions.



Part #	Description
PF-T10S-3.6	DPM 10 Stud Penetration, Single Sided for 3" Flex, 3" Steel or FRP, 90 mm Pipes.
PF-T10S-3.8	DPM 10 Stud Penetration, Single Sided for Ameron 3" LCX or APT V300-SCN & R300-SCN.
PF-T10S-4.4	DPM 10 Stud Penetration, Single Sided for 110 mm Pipe, instructions.
PF-T10S-4.5	DPM 10 Stud Penetration, Single Sided for 4" Rigid Conduit, Steel or IPS Pipes, Instructions.
PF-T10S-4.6x2.0	DPM 10 Stud Penetration, Single Sided for 4" Corrugated Ducted with 1/2" Flex Pipes, Includes 1 ea. 10S 1 ea. 10SDF-4.6x2.0 1 ea. Corrugated Duct Seal, Flange Nuts, Stud Seals, Instructions.
PF-T10S-4.6x2.5	DPM 10 Stud Penetration, Single Sided for 4" Corrugated Ducted with 2" Flex Pipes, Includes 1 ea. 10S 1 ea. 10SDF-4.6x2.5 1 ea. Corrugated Duct Seal, Flange Nuts, Stud Seals, Instructions.

Single Sided Studded Penetrations -

# Penetration Fittings



*"Better by Design"*

Single Sided Studded Penetrations -

## Single Sided Studded Penetrations - Traditional Style ~ Continued



Part #	Description
PF-T10S-4.6x2.7	DPM 10 Stud Penetration, Single Sided for 4" Corrugated Ducted with 1.5 AEP Pipe, Includes 1 ea. 10S 1 ea. 10SDF-4.6x2.7 1 ea. Corrugated Duct Seal, Flange Nuts, Stud Seals, Instructions.
PF-T10S-4.8	DPM 10 Stud Penetration, Single Sided for Ameron 4" LCX Pipe, Instructions.
PF-T10S-5.0	DPM 10 Stud Penetration, Single Sided for 125 mm Pipe, Instructions.



Part #	Description
PF-T12S-5.2	DPM 12 Stud penetration, Single Sided for 130 mm Pipes, Instructions.
PF-T12S-5.6	DPM 12 Stud Penetration, Single Sided for Steel or IPS pipes 141 mm Pipes, Instructions.
PF-T12S-6.3	DPM 12 Stud Penetration, Single Sided for 160 mm Pipes, Instructions.
PF-T12S-6.7	DPM 12 Stud Penetration Single Sided for 6" Rigid Conduit, Steel or FRP Pipes.
PF-T12S-6.7x4.5	DPM 12 Stud Penetration, Single Sided for 6" FRP over 4" FRP, Instructions.



*"Better by Design"*

# Flex Connectors

1 1/2" Stainless Version with Plated Carbon

## 1 1/2" Stainless Version with Plated Carbon Steel Ends ~ Male x Female



Part #	Description
FC-1.5M2F-12-CS	1 1/2" Flex Connector 1 1/2" Male x 2" Female 12" Long. Plated Carbon Steel Ends.
FC-1.5M2F-15-CS	1 1/2" Flex Connector 1 1/2" Male x 2" Female 15" Long. Plated Carbon Steel Ends.
FC-1.5M2F-18-CS	1 1/2" Flex Connector 1 1/2" Male x 2" Female 18" Long. Plated Carbon Steel Ends.
FC-1.5M2F-24-CS	1 1/2" Flex Connector 1 1/2" Male x 2" Female 24" Long. Plated Carbon Steel Ends.
FC-1.5M2F-30-CS	1 1/2" Flex Connector 1 1/2" Male x 2" Female 30" Long. Plated Carbon Steel Ends.
FC-1.5M2F-36-CS	1 1/2" Flex Connector 1 1/2" Male x 2" Female 36" Long. Plated Carbon Steel Ends.

## 1 1/2" Stainless Version with Plated Carbon Steel Ends ~ Male x Male



Part #	Description
FC-1.5MM-12-CS	1-1/2" Flex Connector Male x Male 12" long. Plated Carbon Steel Ends.
FC-1.5MM-15-CS	1-1/2" Flex Connector Male x Male 15" long...Plated Carbon Steel Ends
FC-1.5MM-18-CS	1-1/2" Flex Connector Male x Male 18" long...Plated Carbon Steel Ends
FC-1.5MM-24-CS	1-1/2" Flex Connector Male x Male 24" long...Plated Carbon Steel Ends
FC-1.5MM-30-CS	1-1/2" Flex Connector Male x Male 30" long...Plated Carbon Steel Ends
FC-1.5MM-36-CS	1-1/2" Flex Connector Male x Male 36" long...Plated Carbon Steel Ends

## 1 1/2" Stainless Version with Plated Carbon Steel Ends ~ Male x Quick Release Male



Part #	Description
FC-1.5MQM-12-CS	1 1/2" Flex Connector Male x Quick Release Male 12" long. Plated Carbon Steel Ends.
FC-1.5MQM-15-CS	1 1/2" Flex Connector Male x Quick Release Male 15" long. Plated Carbon Steel Ends.
FC-1.5MQM-18-CS	1 1/2" Flex Connector Male x Quick Release Male 18" long. Plated Carbon Steel Ends.
FC-1.5MQM-24-CS	1 1/2" Flex Connector Male x Quick Release Male 24" long. Plated Carbon Steel Ends.
FC-1.5MQM-30-CS	1 1/2" Flex Connector Male x Quick Release Male 30" long. Plated Carbon Steel Ends.
FC-1.5MQM-36-CS	1 1/2" Flex Connector Male x Quick Release Male 36" long. Plated Carbon Steel Ends.

# Flex Connectors



*"Better by Design"*

1 1/2" Stainless Version with Plated Carbon

1 1/2" Stainless Version with Plated Carbon Steel Ends ~ Male x Quick Release Bonded



Part #	Description
FC-1.5-FQG-18-CS	1 1/2" Flex Connector Female NPT x 2" Quick-fit GLUE (FRP) 18" long. Plated Carbon Steel Ends.

1 1/2" Stainless Version with Plated Carbon Steel Ends ~ Male x Male Swivel



Part #	Description
FC-1.5MSM-12-CS	1 1/2" Flex Connector Male x Male Swivel 12" Long. Plated Carbon Steel Ends.
FC-1.5MSM-15-CS	1 1/2" Flex Connector Male x Male Swivel 15" Long. Plated Carbon steel Ends.
FC-1.5MSM-18-CS	1 1/2" Flex Connector Male x Male Swivel 18" Long. Plated Carbon Steel Ends.
FC-1.5MSM-24-CS	1 1/2" Flex Connector Male x Male Swivel 24" Long. Plated Carbon Steel Ends.
FC-1.5MSM-30-CS	1 1/2" Flex Connector Male x Male Swivel 30" Long. Plated Carbon steel ends.
FC-1.5MSM-36-CS	1 1/2" Flex Connector Male x Male Swivel 36" Long. Plated Carbon steel ends.

1" Stainless Version with Plated Carbon Steel Ends ~ Male x Male



Part #	Description
FC-1MM-12-CS	1" Flex Connector Male x Male 12" long. Plated Carbon Steel Ends.
FC-1MM-15-CS	1" Flex Connector Male x Male 15" long. Plated Carbon Steel Ends.
FC-1MM-18-CS	1" Flex Connector Male x Male 18" long. Plated Carbon Steel Ends.
FC-1MM-24-CS	1" Flex Connector Male x Male 24" long. Plated Carbon Steel Ends.

1" Stainless Version with Plated Carbon Steel Ends ~ Male x Male Swivel



Part #	Description
FC-1MSM-15-CS	1" Flex Connector Male Swivel x Male 15" long. Plated Carbon Steel Ends.
FC-1MSM-24-CS	1" Flex Connector Male Swivel x Male 24" long. Plated Carbon Steel Ends.
FC-1MSM-36-CS	1" Flex Connector Male x Male Swivel 36" Long. Plated Carbon Steel Ends.



*"Better by Design"*

# Flex Connectors

## 2" Stainless Version with Plated Carbon Steel Ends ~ Male x Male



Part #	Description
FC-2MM-12-CS	2" Flex Connector Male x Male 12" long. Plated Carbon Steel ends.
FC-2MM-15-CS	2" Flex Connector Male x Male 15" long. Plated Carbon Steel ends.
FC-2MM-18-CS	2" Flex Connector Male x Male 18" long...Plated Carbon Steel Ends
FC-2MM-24-CS	2" Flex Connector Male x Male 24" long. ..Plated Carbon Steel Ends
FC-2MM-30-CS	2" Flex Connector Male x Male 30" long. ..Plated Carbon Steel Ends
FC-2MM-36-CS	2" Flex Connector Male x Male 36" long. ..Plated Carbon Steel Ends

## 2" Stainless Version with Plated Carbon Steel Ends ~ Male x Quick Release Male



Part #	Description
FC-2MQM-12-CS	2" Flex Connector Male x Quick Release Male 12" long. Plated Carbon Steel Ends.
FC-2MQM-15-CS	2" Flex Connector Male x Quick Release Male 15" long. Plated Carbon Steel Ends.
FC-2MQM-18-CS	2" Flex Connector Male x Quick Release Male 18" long. Plated Carbon Steel Ends.
FC-2MQM-24-CS	2" Flex Connector Male x Quick Release Male 24" long. Plated Carbon Steel Ends.
FC-2MQM-30-CS	2" Flex Connector Male x Quick Release Male 30" long. Plated Carbon Steel Ends.
FC-2MQM-36-CS	2" Flex Connector Male x Quick Release Male 36" long. Plated Carbon Steel Ends.

## 2" Stainless Version with Plated Carbon Steel Ends ~ Male x Male Swivel



Part #	Description
FC-2MSM-12-CS	2" Flex Connector Male x Male Swivel 12" Long. Plated Carbon Steel Ends.
FC-2MSM-15-CS	2" Flex Connector Male x Male Swivel 15" Long. Plated Carbon Steel Ends.
FC-2MSM-18-CS	2" Flex Connector Male x Male Swivel 18" Long. Plated Carbon Steel Ends.
FC-2MSM-24-CS	2" Flex Connector Male x Male Swivel 24" Long. Plated Carbon Steel Ends.
FC-2MSM-30-CS	2" Flex Connector Male x Male Swivel 30" Long. Plated Carbon Steel Ends.
FC-2MSM-36-CS	2" Flex Connector Male x Male Swivel 36" Long. Plated Carbon Steel Ends.

2" Stainless Version with Plated Carbon



## 3" Stainless Version with Plated Carbon Steel Ends ~ Male x Male



Part #	Description
FC-3MM-12-CS	3" Flex Connector Male x Male 12" long. Plated Carbon Steel Ends.
FC-3MM-15-CS	3" Flex Connector Male x Male 15" long. Plated Carbon Steel Ends.
FC-3MM-18-CS	3" Flex Connector Male x Male 18" long. Plated Carbon Steel Ends.
FC-3MM-24-CS	3" Flex Connector Male x Male 24" long. Plated Carbon Steel Ends.
FC-3MM-30-CS	3" Flex Connector Male x Male 30" long. Plated Carbon Steel Ends.
FC-3MM-36-CS	3" Flex Connector Male x Male 36" long. Plated Carbon Steel Ends.

## 3" Stainless Version with Plated Carbon Steel Ends ~ Male x Quick Release Male



Part #	Description
FC-3MQM-12-CS	3" Flex Connector Male x Quick Release Male 12" long Plated Carbon Steel Ends.
FC-3MQM-15-CS	3" Flex Connector Male x Quick Release Male 15" long Plated Carbon Steel Ends.
FC-3MQM-18-CS	3" Flex Connector Male x Quick Release Male 18" long Plated Carbon Steel Ends.
FC-3MQM-24-CS	3" Flex Connector Male x Quick Release Male 24" long Plated Carbon Steel Ends.
FC-3MQM-30-CS	3" Flex Connector Male x Quick Release Male 30" long Plated Carbon Steel Ends.
FC-3MQM-36-CS	3" Flex Connector Male x Quick Release Male 36" long Plated Carbon Steel Ends.

## 1 1/2" All Stainless Version with Stainless Steel Ends ~ Male 90 x Male Swivel



Part #	Description
FC-1.590MSM-18-SS	1-1/2" SF 90° Elbow X 1-1/2" NPT Male Swivel. All Stainless Steel
FC-1.5MSM-15-SS	1 1/2" Flex Connector Male x Male Swivel 15" Long. All Stainless Steel
FC-1.5MSM-24-SS	1 1/2" Flex Connector Male x Male Swivel 24" Long. All Stainless Steel
FC-1MSM-18-SS	1" Flex Connector Male x Male Swivel 18" Long. All Stainless Steel
FC-2MSM-18-SS	2" Flex Connector Male x Male Swivel 18" Long. All Stainless Steel
FC-2MSM-24-SS	2" Flex Connector Male x Male Swivel 24" Long. All Stainless Steel



*"Better by Design"*

# Inserts, Caps & Plugs

## Inserts



Part #	Description
PF-IA 1.4x.375	DPM Insert, from 1" nominal to .375".
PF-IA 1.4x.5	DPM Insert, from 1" nominal to .5".
PF-IA 1.4x.6	DPM Insert, from 1" nominal to .61" for cables.
PF-IA 1.4x.8	DPM Insert, from 1" nominal to .72" for cables.
PF-IA 1.4x.9	DPM Insert, from 1" nominal to 1/2" nominal.
PF-IA 1.4x1.1	DPM Insert, from 1" nominal to 3/4" nominal.
PF-IA 1.4x1.2	DPM Insert, from 1" nominal to 3/4" PVC Coated.

Part #	Description
PF-IA 2.4x.9	DPM Insert, from 2" nominal to 1/2" nominal.
PF-IA 2.4x1.1	DPM Insert, from 2" nominal to 3/4" nominal.
PF-IA 2.4x1.4	DPM Insert, from 2" nominal to 1" nominal.
PF-IA 2.4x1.6	DPM Insert, from 2.4"x1.6", Nps 2.4"ODx1-1/4"ID.
PF-IA 2.4x1.7	DPM Insert, from 2" nominal to 1-1/4" nominal.
PF-IA 2.4x1.8	DPM Insert, from 2" nominal to 1.8" custom pipe.
PF-IA 2.4x1.9	DPM Insert, from 2" nominal to 1-1/2" nominal.
PF-IA 2.4x2.0	DPM Insert, from 2" nominal to 1-1/2" flex pipe.

Part #	Description
PF-IA 2.5x1.1	DPM Insert, from 2" nominal to 3/4" nominal.
PF-IA 2.5x1.4	DPM Insert, from 2" nominal to 1" nominal.
PF-IA 2.5x1.5	DPM Insert, from 2" nominal to 1" Flex pipe.
PF-IA 2.5x1.7	DPM Insert, from 2" nominal to 1-1/4" steel pipe.
PF-IA 2.5x1.9	DPM Insert, from 2" nominal to 1-1/2" flex pipe.
PF-IA 2.5x2.0	DPM Insert, from 63mm to 50mm.
PF-IA 2.5x2.2	DPM Insert, from 2" nominal to 2.2" OD Pipe.

Part #	Description
PF-IA 3.0x2.5	DPM Insert, from 75mm to 63 mm.

Part #	Description
PF-IA 3.0x2.7	DPM Insert, from 75mm to 2.7" OD.

Inserts



## Inserts - Continued

Inserts - Continued



Part #	Description
PF-IA 3.6x1-1/2 Hex	DPM Insert, from 3" nominal to 1-1/2" nominal pipe (1.94" face to face) hex nut.
PF-IA 3.6x1.1	DPM Insert, from 3" nominal to 3/4" nominal.
PF-IA 3.6x1.4	DPM Insert, from 3" nominal to 1" nominal.
PF-IA 3.6x1.6	DPM Insert, from 3" nominal to 40 mm.
PF-IA 3.6x1.7	DPM Insert, from 3" nominal to 1-1/4" nominal.
PF-IA 3.6x1.8	DPM Insert, from 3" nominal to 1.8" custom pipe.
PF-IA 3.6x1.9	DPM Insert, from 3" nominal to 1-1/2" nominal.
PF-IA 3.6x2 Hex	DPM Insert, from 3" nominal to 2" nominal pipe (2.49" face to face) hex nut.
PF-IA 3.6x2.0	DPM Insert, from 3" nominal to 1-1/2" flex pipe.
PF-IA 3.6x2.2	DPM Insert, from 3" nominal to custom flex pipe.
PF-IA 3.6x2.4	DPM Insert, from 3" nominal to 2" nominal.
PF-IA 3.6x2.5	DPM Insert, from 3" nominal to 63 mm.
PF-IA 3.6x2.7	DPM Insert, from 3" nominal to custom flex pipe.
PF-IA 3.6x2.9	DPM Insert, from 3" nominal to custom flex pipe.
PF-IA 3.6x3.0	DPM Insert, from 3" nominal to 75 mm.
PF-IA 3.6x3.2	DPM Insert, from 3" nominal to custom flex pipe.
PF-IA 3.6x3.3	DPM Insert, from 3" nominal to custom flex pipe.



Part #	Description
PF-IA 4.5x1.8	DPM Insert, for 4" FRP to 1.8" OD pipe.
PF-IA 4.5x2.0	DPM Insert, for 4" FRP to 1 1/2" APT Double wall pipe.
PF-IA 4.5x2.2	DPM Insert, for 4" FRP to 1 1/2" single wall TCI.
PF-IA 4.5x2.4	DPM Insert, from 4" nominal to 2" nominal.
PF-IA 4.5x2.5	DPM Insert, from 4" nominal to 2" flex pipe.
PF-IA 4.5x2.7	DPM Insert, from 4" nominal to 2.7" OD pipe.
PF-IA 4.5x2.9	DPM Insert, from 4" nominal to 2.9" OD pipe.
PF-IA 4.5x3.3	DPM Insert, from 4" nominal to 2" HL 50 Brugg pipe.
PF-IA 4.5x3.6	DPM Insert, from 4" nominal to 3" nominal.
PF-IA 4.5x3.8	DPM Insert, from 4" nominal to 3" LCX.
PF-IA 4.5x3.9	DPM Insert, from 4" nominal to custom pipe.
PF-IA 4.5x4.0	DPM Insert, from 4" nominal to custom pipe.
PF-IA 4.5x4.2	DPM Insert, from 4" nominal to 4" copper pipe.



*"Better by Design"*

# Inserts, Caps & Plugs

## Inserts - Continued



Part #	Description
PF-IA 4.8x3.6	DPM Insert, from 4.8" to 3" nominal.
PF-IA 4.8x3.8	DPM Insert, from 4.8" to 3" LCX.
PF-IA 4.8x4.5	DPM Insert, from 4.8" to 4" nominal.



Part #	Description
PF-IA 5.0x3.6	DPM Insert, from 125 mm to 3" nominal.
PF-IA 5.0x3.9	DPM Insert, from 125 mm to custom pipe.
PF-IA 5.0x4.5	DPM Insert, from 125 mm to 4" nominal.

Part #	Description
PF-IA 6.7x3.6	DPM Insert, from 6" nominal to 3' FRP.
PF-IA 6.7x4.5	DPM Insert, from 6" nominal to 4" FRP.
PF-IA 6.7x5.0	DPM Insert, from 6" nominal to 125 mm.

## Caps



Part #	Description
PF-IA 2.4xCAP	DPM End Cap, for 2" nominal pipe.
PF-IA 3.6xCAP	DPM End Cap, for 3" nominal pipe.
PF-IA 4.5xCAP	DPM End Cap, for 4" nominal pipe.
PF-IA 5.6xCAP	DPM End Cap, for 5" nominal pipe.
PF-IA 6.7xCAP	DPM End Cap, for 6" nominal pipe.

## Plugs



Part #	Description
PF-IA 1.4xPlug	DPM Plug, blind Plug for field drilling.
PF-IA 1.5xPlug	DPM Plug, specifically designed to fit the ports on the RA 3.6x1.5x1.5 dual outlet reducer.
PF-IA 2.4xPlug	DPM Plug, blind Plug for field drilling.
PF-IA 2.5xPlug	DPM Plug, blind Plug for field drilling.
PF-IA 3.0xPlug	DPM Plug, blind Plug for field drilling.
PF-IA 3.6xPlug	DPM 3" Plug, blind Plug for field drilling.
PF-IA 4.5xPlug	DPM 4" Plug, blind Plug for field drilling.
PF-IA 6.7xPlug	DPM 6" Plug, blind Plug for field drilling.

Inserts - Continued

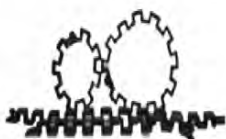
# Centralizers



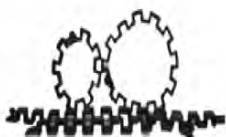
*"Better by Design"*

## Centralizers

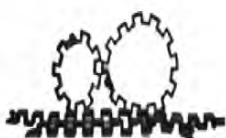
Centralizers



Part #	Description
IN-C 3x1	DPM Centralizer for 3" pipes with ID's larger than 3.0" and a primary pipe OD of 1.3" (1" nominal)
IN-C 3x1 1/2	DPM Centralizer for 3" pipes with ID's larger than 3.0" and a primary pipe OD of 1.3" (1" nominal)
IN-C 3x1 1/4	DPM Centralizer for 3" pipes with ID's larger than 3.0" and a primary pipe OD of 1.7" (1-1/4" nominal)
IN-C 3x2	DPM Centralizer for 3" thin wall pipe with ID larger than 3.2" and a primary pipe OD of 2.3" (2" nominal)
IN-C 3x3/4	DPM Centralizer for 3" pipes with ID's larger than 3.0" and a primary pipe OD of 1.1" (3/4" nominal)
IN-C 3xCustom	DPM Centralizer for 3" pipes with ID's larger than 3.0", Specify Primary pipe OD includes machining costs.



Part #	Description
IN-C 4x1	DPM Centralizer for 4" pipes with ID's larger than 4.1" and a primary pipe OD of 1.3" (1" nominal)
IN-C 4x1 1/2	DPM Centralizer for 4" pipes with ID's larger than 4.1" and a primary pipe OD of 1.9" (1-1/2" nominal)
IN-C 4x2	DPM Centralizer for 4" pipes with ID's larger than 4.1" and a primary pipe OD of 2.4" (2" nominal)
IN-C 4x3	DPM Centralizer for 4" thin wall pipe with ID larger than 4.1" and a primary pipe OD of 3.5" (3" nominal)
IN-C 4xCustom	DPM Centralizer for 4" pipes with ID's larger than 4.1", Specify Primary pipe OD.



Part #	Description
IN-C 6x3	DPM Centralizer for 6" pipes with ID's larger than 6.1" and a primary pipe OD of 3.5" (3" nominal)
IN-C 6x4	DPM Centralizer for 6" pipes with ID's larger than 6.1" and a primary pipe OD of 4.5" (4" nominal)
IN-C 6xCustom	DPM Centralizer for 6" pipes with ID's larger than 6.1", Specify Primary pipe OD Random quantity, includes machining costs.





*"Better by Design"*

## Test Reducers

Test Reducers with Stainless Steel Air Test Valve for up to 10 PSIG tests



Part #	Description
PF-RA 1.4x1.4 ASS	DPM Reducer, for 1.2-1.4" to 1.2-1.4" with Stainless Air Test Port.



Part #	Description
PF-RA 1.6x1.3 ASS	DPM Reducer, for 40 mm x 32 mm. with stainless air test.



Part #	Description
PF-RA 2.0x1.6 ASS	DPM Reducer, for 1-1/2" Coaxial Pipes with Stainless air test valve.
PF-RA 2.0x1.7 ASS	DPM Reducer, for 1-1/2" APT XP-150SC Pipes with Stainless Air Test Port, clamps.
PF-RA 2.0x1.8 ASS	DPM Reducer, for 1 1/2 OPW flex pipe C15, CP 15 RB Reducer with standard clamps and Stainless Air Test Port.
PF-RA 2.0x2.0 ASS	DPM Reducer, for 1-1/2" Coaxial Pipes with Stainless Air Test Port, clamps, Nps 1-1/2"x1-1/2".



Part #	Description
PF-RA 2.4x1.1 ASS	DPM Reducer, for 2" FRP or Cuff to pipes with OD's 1.2 to 1.4" with Stainless Air Test Port.
PF-RA 2.4x1.4 ASS	DPM Reducer, for 2" FRP or Cuff to pipes with OD's 1.2 to 1.4" with Stainless Air Test Port.
PF-RA 2.4x1.5 ASS	DPM Reducer, for 2" FRP or Cuff to 1.5" OD pipes.
PF-RA 2.4x2.0 ASS	DPM Reducer, for 2" FRP or Cuff to pipes with OD's 1.8 to 2.0" with Stainless Air Test Port.

Test Reducers with Stainless Steel Air Test

# Test Reducers



*"Better by Design"*

Test Reducers with Stainless Steel Air Test Valve for up to 10 PSIG tests ~ Continued



Part #	Description
PF-RA 2.5x1.3 ASS	DPM Reducer, for 2" FRP to 32MM Pipes, With Stainless Air Test Port.
PF-RA 2.5x2.0 ASS	DPM Reducer, for 63mm to 50mm with Stainless Air Test Port.
PF-RA 2.5x2.3 ASS	DPM Reducer, for 2.3-2.5" custom to 2.3 to 2.5" custom Pipes with Stainless air test value.
PF-RA 2.5x2.5 ASS	DPM Reducer, for 2.5" custom to 2.5" custom Pipes, with stainless air test port.



Part #	Description
PF-RA 2.7x2.0 ASS	DPM Reducer, for IPP 1.5" DW Pipe with Stainless air valve and standard clamps.
PF-RA 2.7x2.4 ASS	DPM Reducer, for 2" LCX High Pressure Reducer with standard clamps and Stainless Air Test Port.
PF-RA 2.7x2.5 ASS	DPM Reducer, for 2" APT XP-200 SC Reducer with standard clamps and Stainless Air Test Port.
PF-RA 2.7x2.7 ASS	DPM Reducer, for 2" custom coaxial Pipes, clamps with Stainless Air Test Port.



Part #	Description
PF-RA 3.0x2.0 ASS	DPM Reducer, for 75mm to 50mm with Stainless Air Test Port.
PF-RA 3.0x2.5 ASS	DPM Reducer, for 75mm to 63mm with Stainless Air Test Port.



Part #	Description
PF-RA 3.6x1.1 ASS	DPM Reducer, for 3" FRP to 3/4" conduit Pipes with Stainless Air Test Port.
PF-RA 3.6x1.4 ASS	DPM Reducer, for 3" FRP or Steel to 1" nominal Pipes with Stainless Air Test Port.
PF-RA 3.6x1.6 ASS	DPM Reducer, for 3" FRP or Steel to 1" Brugg, with Stainless Air Test Port.
PF-RA 3.6x1.7 ASS	DPM Reducer, for 3" FRP or Steel to 1-1/4" Steel pipes with Stainless Air Test Port.
PF-RA 3.6x1.8 ASS	DPM Reducer, for 3" FRP or Steel to 1.8" custom pipes with Stainless Air Test Port.
PF-RA 3.6x1.9 ASS	DPM Reducer, for 3" FRP to 1 1/2" Nominal pipes with Stainless Air Test Port.
PF-RA 3.6x2.0 ASS	DPM Reducer, for 3" FRP to 1 1/2" flex pipes with Stainless Air Test Port.
PF-RA 3.6x2.4 ASS	DPM Reducer, for 3" FRP to 2" FRP Pipes with Stainless Air Test Port.
PF-RA 3.6x2.5 ASS	DPM Reducer, for 90mm to 63mm Pipes with Stainless Air Test Port.
PF-RA 3.6x2.7 ASS	DPM Reducer, for 3" FRP to 2.7" OD Pipes with Stainless Air Test Port.



*"Better by Design"*

# Test Reducers

Test Reducers with Stainless Steel Air Test Valve for up to 10 PSIG tests ~ Continued



Part #	Description
PF-RA 3.6x3.0 ASS	DPM Reducer, for 3" FRP to Pipes with 3" OD with Stainless Air Test Port.
PF-RA 3.6x3.6 ASS	DPM Reducer, for 3" FRP to 3' FRP Pipes, with Stainless air valve.



Part #	Description
PF-RA 3.8x3.6 ASS	DPM Reducer, for 3" LCX High Pressure with standard clamps and Stainless Air Test Port.



Part #	Description
PF-RA 4.5x1.1 ASS	DPM Reducer, for 4" FRP to 3/4" nominal pipe with Stainless Air Test Port.
PF-RA 4.5x1.4 ASS	DPM Reducer, for 4" FRP to 1" nominal pipe with Stainless Air Test Port.
PF-RA 4.5x1.9 ASS	DPM Reducer, for 4" Steel to 1.5" Steel, with Stainless Steel Air Test Port.
PF-RA 4.5x2.0 ASS	DPM Reducer, for 4" Chase to 1.5" APT Pipe, with Stainless Steel Air Test Port.
PF-RA 4.5x2.2 ASS	DPM Reducer, for 4" FRP to 1 1/2" single wall TCI with Stainless Air Test Valve.
PF-RA 4.5x2.4 ASS	DPM Reducer, for 4" FRP to 2" FRP, with Stainless Steel Air Test Port.
PF-RA 4.5x2.5 ASS	DPM Reducer, for 110mm to 63mm pipes, with Stainless Air Test Port.
Part #	Description
PF-RA 4.5x2.9 ASS	DPM Reducer, for 4" nominal pipe to 2.5" nominal pipe, with Stainless Air Test Port.
PF-RA 4.5x3.0 ASS	DPM Reducer, for 4" FRP to 2 1/2" nominal pipe with Stainless Air Test Valve.
PF-RA 4.5x3.3 ASS	DPM Reducer, for 4" FRP to 1 1/2" pipe, with stainless air test port.
PF-RA 4.5x3.6 ASS	DPM Reducer, for 4" FRP to 3" FRP with Stainless Air Test Port, clamps, Nps 4"x 3".
PF-RA 4.5x4.5 ASS	DPM Reducer, for 4" FRP to 4" FRP Pipes with Stainless Air Test Port.

Test Reducers with Stainless Steel Air Test

# Test Reducers



*"Better by Design"*

Test Reducers with Stainless Steel Air Test Valve for up to 10 PSIG tests ~ Continued



Part #	Description
PF-RA 4.8x4.5 ASS	DPM Reducer, for 4" LCX with standard clamps and Stainless air test valve.



Part #	Description
PF-RA 5.0x1.9 ASS	DPM Reducer, for 5" OD to 1 1/2" nominal pipe, with stainless air valve.
PF-RA 5.0x2.0 ASS	DPM Reducer, for 5" OD to 2" OD with Stainless air valve.
PF-RA 5.0x2.3 ASS	DPM Reducer, for 5" OD to 2.25" OD pipe, with Stainless Air valve.
PF-RA 5.0x2.4 ASS	DPM Reducer, for 5" OD to 2" FRP pipe, with stainless air valve.
PF-RA 5.0x2.5 ASS	DPM Reducer, for 5" OD Pipe to 2" nominal with Stainless Air Test Value.
PF-RA 5.0x3.0 ASS	DPM Reducer, for 5" OD Pipe to 3" OD Pipe with Stainless Air Test Value.
PF-RA 5.0x3.6 ASS	DPM Reducer, for 5" OD Pipe to 3" FRP nominal with Stainless Air Test Value.
PF-RA 5.0x4.4 ASS	DPM Reducer, for 5" OD Pipe to 110 MM Pipe with Stainless Air Test Value.



Part #	Description
PF-RA 5.6x3.6 ASS	DPM Reducer, for 5" FRP to 3" FRP with Stainless Air Test Port.



Part #	Description
PF-RA 6.3x2.5 ASS	DPM Reducer, for 160mm to 63mm nominal, with stainless air valve.
PF-RA 6.3x3.0 ASS	DPM Reducer, for 160mm to 75mm nominal, with stainless air valve.
PF-RA 6.3x3.6 ASS	DPM Reducer, for 160mm to 90mm nominal, with stainless air valve.
PF-RA 6.3x4.4 ASS	DPM Reducer, for 160mm to 110mm nominal, with stainless air valve.
PF-RA 6.3x5.0 ASS	DPM Reducer, for 160mm to 125mm nominal, with stainless air valve.



*"Better by Design"*

# Test Reducers

Test Reducers with Stainless Steel Air Test Valve for up to 10 PSIG tests ~ Continued



Part #	Description
PF-RA 6.7x1.4 ASS	DPM Reducer, for 6" nominal to 1" nominal, with stainless air valve.
PF-RA 6.7x1.9 ASS	DPM Reducer, for 6" nominal to 1.5" nominal, with stainless air valve.
PF-RA 6.7x2.3 ASS	DPM Reducer, for 6" nominal to Omega flex 2.3 pipe w/stainless air valve.
PF-RA 6.7x2.4 ASS	DPM Reducer, for 6" nominal to 2" FRP pipe, with stainless air valve.
PF-RA 6.7x2.5 ASS	DPM Reducer, for 6" nominal to 63mm pipe, with stainless air valve.
PF-RA 6.7x2.7 ASS	DPM Reducer, for 6" FRP to 2" LCX or 2-1/2" copper with stainless air valve.
PF-RA 6.7x3.3 ASS	DPM Reducer, for 6" nominal to 2" Brugg pipe, with stainless air valve.
PF-RA 6.7x3.6 ASS	DPM Reducer, for 6" nominal to 3" nominal, clamps, Nps 6"x3" (R170mmx90mm) with Stainless Air Test Port.
PF-RA 6.7x4.4 ASS	DPM Reducer, for 6" nominal to 110mm pipe with Stainless Air Test Port.
PF-RA 6.7x4.5 ASS	DPM Reducer, for 6" nominal to 4" nominal, with Stainless air test port.
PF-RA 6.7x4.8 ASS	DPM Reducer, for 6" nominal to 4" LCX pipe, with stainless air valve.
PF-RA 6.7x5.0 ASS	DPM Reducer, for 6" nominal to 5" OD Pipe with Stainless Air Test Port.
PF-RA 6.7x5.6 ASS	DPM Reducer, for 6" nominal to 5" nominal, with stainless air valve.
PF-RA 6.7x6.7 ASS	DPM Reducer, for 6" nominal to 6" nominal with Stainless Air Test Port.

Custom & Specialty Test Reducers with Stainless Steel Air Test Valve for up to 10 PSIG tests



Part #	Description
PF-RA 3.6x1.5x1.5 ASS	DPM Reducer, for 3" FRP to two 1.5" outlet. Compete with 1- IA 1.5xPlug and stainless air test valv...
PF-RA 4.5x1.4x1.4 ASS	DPM Reducer, for 4" FRP to two 1" nominal pipes, with Stainless Air Test Port.
PF-RA 4.9x1.9x1.4 ASS	DPM Reducer, for 4" FRP or TCI "B" Pipe to 1-1/2 & 1" nominal with Stainless Air Test Port.

Test Reducers with Stainless Steel Air Test



# Test Reducers



*"Better by Design"*

Custom & Specialty Test Reducers with

Custom & Specialty Test Reducers with Stainless Steel Air Test Valve for up to 10 PSIG tests



Part #	Description
PF-RA 3.9x1.8 ASS	DPM Reducer, for TCI "A" Pipe to 1.8" custom pipe With Stainless Air Test Valve.
PF-RA 3.9x2.0 ASS	DPM Reducer, for TCI "A" Pipe to 2" OD pipe with Stainless Air Test Port.
PF-RA 3.9x2.4 ASS	DPM Reducer, for TCI "A" Pipe to 2" FRP with Stainless Air Test Port.
PF-RA 3.9x2.4L ASS	DPM Reducer, for TCI "A" Pipe to 2" FRP & Custom applications, with stainless air valve.
PF-RA 3.9x3.0 ASS	DPM Reducer, for TCI "A" Pipe to 3" OD Pipe, with stainless air valve.
PF-RA 3.9x3.9 ASS	DPM Reducer, for TCI "A" Pipe to TCI "A" Pipe with Stainless Air Test Port.
PF-RA 3.9x3.9L ASS	DPM Reducer, for TCI "A" Pipe to TCI "A" Pipe & Custom applications, with stainless air valve.
PF-RA 3.9x1.4 ASS	DPM Reducer, for TCI "A" Pipe to 1" nominal Pipe, with Stainless air test valve.

High Pressure Test Reducers with Stainless Steel Air Test Valve for up to 35 PSIG tests



Part #	Description
PF-RA 3.8x3.6HP ASS	DPM Reducer, for 3" LCX High Pressure (35 PSIG Test), with Stainless Air Test Port.
PF-RA 2.7x2.4HP ASS	DPM Reducer, for 2" LCX High Pressure (35 PSIG Test) with Stainless Air Test Port. (100)
PF-RA 3.6x2.4HP ASS	DPM Reducer, for 3" FRP to 2" nominal pipe. High Pressure (35 PSIG Test) , with Stainless Air Tes...
PF-RA 4.8x4.5HP ASS	DPM Reducer, for 4" LCX High Pressure with Stainless air test valve. (35 PSIG Test)



*"Better by Design"*

## Crossover Fittings

### Crossover Fittings



Part #	Description
PF-Xover-1ft-SS	DPM Cross Over Fitting foot long, Stainless Bicycle fitting & sleeve.
PF-Xover-2ft-SS	DPM Cross Over Fitting feet long, Stainless Bicycle fitting & sleeve
PF-Xover-3ft-SS	DPM Cross Over Fitting feet long, Stainless bicycle Fittings & Sleeves.
PF-Xover-6ft-SS	DPM Cross Over Fitting feet long, Stainless Bicycle fitting & sleeve
PF-Xover-Test	DPM Cross Over Fitting-One end (bicycle fitting) connects to reducer and the other end is fitted with a barbed Schrader, valve for testing, Stainless.

Crossover Fittings

# Fiberglass Split Repair



*"Better by Design"*

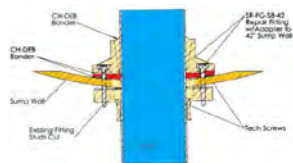
## Fiberglass Split Repair

Fiberglass Split Repair



Part #	Description
SR-FG-S 4-1.4	DPM Fiberglass Split Repair for 4 Stud Applications. Will work on APT, Environ, OPW and Weaver Studded entries. For conduit up to 1.4" OD.
SR-FG-S 8-2.5	DPM Fiberglass Split Repair for 8 Stud Applications. Will work on APT, Environ, and Weaver Studded entries. For pipes 2.0" to 2.5" OD.
SR-FG-S 8-2.7	DPM Fiberglass Split Repair for 8 Stud Applications. Will work on APT, Environ, and Weaver Studded entries. For Pipes 2.5" to 2.7" OD.
SR-FG-S 8-3.6	DPM Fiberglass Split Repair for 8 Stud Applications. Will work on APT, Environ, and Weaver Studded entries. For Pipes 3.0" to 3.6" OD.
SR-FG-S 10-2.5	DPM Fiberglass Split Repair for 10 Stud Applications. Will work on APT, Environ, and Weaver Studded entries. For Pipes 2.0" to 2.5" OD.

## Fiberglass Split Repair - Adapter



Part #	Description
SR-FG-S 4-48	DPM Small Fiberglass Split Repair Adapter For 48" Diameter
SR-FG-S 8-48	DPM Medium Fiberglass Split Repair Adapter For 48" Diameter
SR-FG-S 10-48	DPM Large Fiberglass Split Repair Adapter For 48" Diameter

## Fiberglass Split Repair - Blank



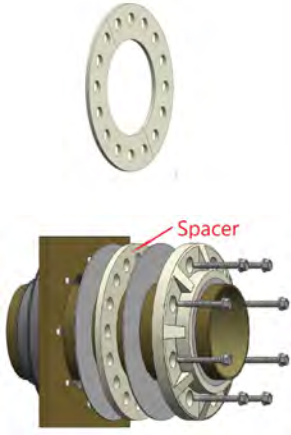
Part #	Description
SR-FG-S 8-Blank	DPM Fiberglass Split Repair for 8 Stud Applications.
SR-FG-S 10-Blank	DPM Fiberglass Split Repair for 10 Stud Applications.



*"Better by Design"*

# Fiberglass Split Repair

## Fiberglass Split Repair - Spacer



Part #	Description
SR-FG-S 4-Spacer	DPM Fiberglass Split Repair 4 Stud Spacer.
SR-FG-S 8-Spacer	DPM Fiberglass Split Repair 8 Stud Spacer.
SR-FG-S 10-Spacer	DPM Fiberglass Split Repair 10 Stud Spacer.

## Fiberglass Split Repair - OPW



Part #	Description
SR-FG-S OPW 4-1.4	DPM Fiberglass Split Repair for 4 Stud OPW Applications. For conduit up to 1.4" OD.
SR-FG-S OPW 8-2.7	DPM Fiberglass Split Repair for 8 Stud OPW Applications. For Pipes 2.5" to 2.7" OD.

## Split Fiberglass Test Reducers with Stainless Steel Air Test Valve



Part #	Description
SR-FGR 2.7x2.4 ASS	DPM Split Repair Fiberglass Penetration Reducer for 2" Ameron LCX Pipe. with Stainless Air Test Port.
SR-FGR 3.6x2.4 ASS	DPM Split Repair Fiberglass Penetration Reducer for for 3" FRP to 2" FRP Pipes with Stainless Air Test Port.

Fiberglass Split Repair - Spacer

# Penetration Repair Kits



*"Better by Design"*

Polyglass Studded Repair Kits

## Polyglass Studded Repair Kits



Part #	Description
PG-S II 4	DPM Polyglass Repair Kit for 4 stud applications. Includes Polyglass Ring and 4 each 1/4-20 Flange Nuts.
PG-S II 4-M	DPM Polyglass Repair Kit for 4 Stud Environ Miniature applications. Includes Polyglass Ring and 4 each 1/4-20 Flange Nuts.
PG-S II 4-SM	DPM Polyglass Repair Kit for 4 Stud Environ Sub Miniature applications. Includes Polyglass Ring and 4 each 1/4-20 Flange Nuts.
PG-S II 4 OPW	DPM Polyglass Repair Kit for OPW 4 stud applications. Includes Polyglass ring and 4 1/4-20 Flange Nuts.



Part #	Description
PG-S II 8	DPM Polyglass Repair Kit for 8 stud applications. Includes Polyglass Ring and 8 each 1/4-20 Flange Nuts.
PG-S II 8 OPW	DPM Polyglass Repair Kit for OPW 8 stud applications. Includes Polyglass Ring for and 8 each 1/4-20 Flange Nuts.



Part #	Description
PG-S II 10	DPM Polyglass Repair Kit for 10 stud applications. Includes Polyglass Ring for and 10 each 1/4-20 Flange Nuts.
PG-S II 10 OPW	DPM Polyglass Repair Kit for OPW 10 stud applications. Includes Polyglass Ring for and 10 each 1/4-20 Flange Nuts.

## Polyglass Universal Repair Kits for Threaded Penetrations



Part #	Description
PG-U II 2.0	DPM Polyglass Penetration fitting Universal Kit for pipe sizes up to 1.8" OD, and can cover hole/fittings up to 2.0" OD.
PG-U II 3.5	DPM Polyglass Penetration fitting Universal Kit for pipe sizes up to 2.9" OD, and can cover hole/fittings up to 3.5" OD.
PG-U II 4.0	DPM Polyglass Penetration fitting Universal Kit for pipe sizes up to 3.5" OD, and can cover hole/fittings up to 4.5" OD.
PG-U II 5.0	DPM Polyglass Penetration fitting Universal Kit for pipe sizes up to 4.5" OD, and can cover hole/fittings up to 5.0" OD.
PG-U II 6.0	DPM Polyglass Penetration fitting Universal Kit for pipe sizes up to 5.5" OD, and can cover hole/fittings up to 6.0" OD.
PG-U II 8.5	DPM Polyglass Penetration fitting Universal Kit for pipe sizes up to 8" OD, and can cover hole/fittings up to 8" OD.





*"Better by Design"*

# Spilt Test Reducers

## Spilt Test Reducers



Part #	Description
SR-RZ 1.4x1.4 ASS	DPM Split Repair Reducer Fuel-Thane, for 1" to 1" with Stainless Air Test Port.
SR-RZ 1.6x1.3 ASS	DPM Split Repair Reducer Fuel-Thane, for 40mm to 32mm and OPW C10 Pipe with Stainless Air Test Port.
SR-RZ 1.8x1.4 ASS	DPM Split Repair Reducer Fuel-Thane, for APT P-100SC & Bravo Pans with Stainless Air Test Port.
SR-RZ 1.9x1.7 ASS	DPM Split Repair Reducer Fuel-Thane for 1-1/2" APT Coaxial Pipes with Stainless Air Test Port, clamps.



Part #	Description
SR-RZ 2.0x1.6 ASS	DPM Split Repair Reducer Fuel-Thane for APT XP 150SC pipe with Stainless air test valve.
SR-RZ 2.0x1.7 ASS	DPM Split Repair Reducer Fuel-Thane for APT XP 150SC pipe with Stainless air test valve.
SR-RZ 2.0x1.8 ASS	DPM Split Repair Reducer Fuel-Thane, for 1-1/2" Coaxial (2.0" to 1.8") w/Stainless Air Valve.
SR-RZ 2.0x2.0 ASS	DPM Split Repair Reducer Fuel-Thane, for 1-1/2" Coaxial Pipes secondary with Stainless Air.



Part #	Description
SR-RZ 2.5x1.4 ASS	DPM Split Repair Reducer Fuel-Thane, for 2" FRP over 1" conduit With Stainless Air Valve.
SR-RZ 2.5x1.5 ASS	DPM Split Repair Reducer Fuel-Thane, for 2" FRP to 1" OPW C10 pipe With Stainless Air Valve.
SR-RZ 2.5x2.0 ASS	DPM Split Repair Reducer Fuel-Thane, for 63mm over 50 mm pipe With Stainless Air Valve.
SR-RZ 2.5x2.3 ASS	DPM Split Repair Reducer Fuel-Thane, for 2.3-2.5" custom to 2.3 to 2.5" custom Pipes, with Stainless Air Test Port.
SR-RZ 2.5x2.5 ASS	Split Repair Reducer Fuel-Thane, custom for 2.5 to 2.5" custom Pipes With Stainless Air Valve.



Part #	Description
SR-RZ 2.7x2.4 ASS	DPM Split Reducer Fuel-Thane, for 2" LCX High Pressure with standard clamps and Stainless Air test port.
SR-RZ 2.7x2.5 ASS	DPM Split Reducer Fuel-Thane, for APT XP-200-SC with Stainless Air Test Port.
SR-RZ 2.7x2.7 ASS	DPM Split Repair Reducer Fuel-Thane, for 2" custom coaxial Pipes with Stainless Air Test Port.

Spilt Test Reducers

# Spilt Test Reducers



*"Better by Design"*

Split Test Reducers ~ Continued

## Split Test Reducers ~ Continued



Part #	Description
SR-RZ 3.0x2.5 ASS	DPM Split Repair Reducer Fuel-Thane, for 75x63 mm Pipes with Stainless air test valve.



Part #	Description
SR-RZ 3.6x1.1 ASS	DPM Split Repair Reducer Fuel-Thane, for 3" FRP to 3/4" Conduit with Stainless Air Test Port.
SR-RZ 3.6x1.4 ASS	DPM Split Repair Reducer Fuel-Thane, for 3" FRP or Steel to 1" nominal Pipes with Stainless Air Test Port.
SR-RZ 3.6x1.5x1.5 ASS	DPM Split Repair Reducer Fuel-Thane, for 3" FRP to two 1.5" outlet. With stainless air test valve.
SR-RZ 3.6x1.6 ASS	DPM SSplit Repair Reducer Fuel-Thane, for 3" FRP or Steel to pipes with an OD of 1.6" with Stainless Air Test Port.
SR-RZ 3.6x1.7 ASS	DPM Split Repair Reducer Fuel-Thane, for 3" FRP to 1-1/4" Steel Pipe with Stainless Air Test Port.
SR-RZ 3.6x1.8 ASS	DPM Split Repair Reducer Fuel-Thane, for 3" FRP to 1.8" Pipe with Stainless Air Test Port.
SR-RZ 3.6x1.9 ASS	DPM Split Repair Reducer Fuel-Thane, for 3" FRP to 1 1/2" Pipe with Stainless Air Test Port.
SR-RZ 3.6x2.0 ASS	DPM Split Repair Reducer Fuel-Thane, for 3" FRP to 1 1/2" Flex with Stainless Air Test Port.
SR-RZ 3.6x2.5 ASS	DPM Split Repair Reducer Fuel-Thane, for 3" FRP to 2" FRP and flex Pipes with Stainless Air Test Port.
SR-RZ 3.6x2.7 ASS	DPM Split Repair Reducer Fuel-Thane, for 3" FRP to 2" LCX Pipe with Stainless Air Valve.
SR-RZ 3.6x3.0 ASS	DPM Split Repair Reducer Fuel-Thane, for 3" FRP to 2" Bell x Male or Female with Stainless Air Test Port.
SR-RZ 3.6x3.6 ASS	DPM Split Repair Reducer Fuel-Thane, for 3" FRP to 3" FRP with Stainless Air Test Port.



Part #	Description
SR-RZ 3.8x3.6 ASS	DPM Split Reducer Fuel-Thane, for 3" LCX High Pressure with standard clamps and Stainless Air Test Port.



*"Better by Design"*

# Spilt Test Reducers

## Split Test Reducers ~ Continued



Part #	Description
SR-RZ 3.9x1.4 ASS	DPM Split Repair Reducer Fuel-Thane, for TCI "A" Pipe to 1" nominal Pipe with Stainless Air Valve.
SR-RZ 3.9x2.0 ASS	DPM Split Repair Reducer Fuel-Thane, for TCI "A" Pipe to 1 1/2" flex pipe with Stainless air tes...
SR-RZ 3.9x2.4 ASS	DPM Split Repair Reducer Fuel-Thane, for TCI "A" Pipe to 2" FRP with Stainless Air Test Port.
SR-RZ 3.9x2.4 LASS	DPM Split Repair Test Reducer Fuel-Thane, for TCI "A" Pipe to 2" FRP & Custom applications With S...
SR-RZ 3.9x2.5 ASS	DPM Split Repair Reducer Fuel-Thane, for TCI "A" Pipe to 2" FRP with Stainless Air Test Port.
SR-RZ 3.9x2.7 ASS	DPM Split Repair Reducer Fuel-Thane, for TCI "A" Pipe to 2" LCX with Stainless Air Test Port , Cl...
SR-RZ 3.9x3.0 ASS	DPM Split Repair Reducer Fuel-Thane, for TCI "A" Pipe to 3.0" OD pipe with Stainless Air Valve.
SR-RZ 3.9x3.9 ASS	DPM SSplit Repair Reducer Fuel-Thane, for TCI "A" Pipe to TCI "A" Pipe with Stainless Air Test Port.



Part #	Description
SR-RZ 4.5x1.1 ASS	DPM Split Repair Reducer Fuel-Thane, for 4" FRP to 3/4" FRP for with Stainless Air Test Port.
SR-RZ 4.5x1.4 ASS	DPM Split Repair Reducer Fuel-Thane, for 4" FRP to 1" FRP for with Stainless Air Test Port.
SR-RZ 4.5x1.4x1.4 ASS	DPM Split Repair Reducer Fuel-Thane, for 4" FRP to two 1" nominal Pipes, w/ Stainless Air Test Port.
SR-RZ 4.5x1.8 ASS	DPM Split Repair Reducer Fuel-Thane, for 4" FRP to 1-1/2" OPW single wall flex With Stainless Air Test Port.
SR-RZ 4.5x1.9 ASS	DPM Split Repair Reducer Fuel-Thane, for 4" FRP to 1-1/2" Nominal With Stainless Air Test Port.
SR-RZ 4.5x2.0 ASS	DPM Split Repair Reducer Fuel-Thane, for 4" FRP to 1.5" flex pipe with Stainless Air Test Port.
SR-RZ 4.5x2.5 ASS	DPM Split Repair Reducer Fuel-Thane, for 4" FRP to 2" flex pipe with Stainless Air Test Port.
SR-RZ 4.5x2.7 ASS	DPM Split Repair Reducer Fuel-Thane, for 4" FRP to 2" LCX pipe with Stainless Air Test Port.
SR-RZ 4.5x3.0 ASS	DPM Split Repair Reducer Fuel-Thane, for 4" FRP to 3" OD pipe with Stainless Air Test Port.
SR-RZ 4.5x3.5X2.7 ASS	DPM Split Repair Reducer Fuel-Thane, for 4" FRP to 3" FRP to 2" LCX. Includes - SR-RZ 4.5x3.5x2.7, 1 size 72, 1 size 60. 1 size 44 clamps.
SR-RZ 4.5x3.6 ASS	DPM Split Repair Reducer Fuel-Thane, for 4" FRP to 3" FRP and flex Pipes with Stainless Air Test Port.
SR-RZ 4.5x4.5 ASS	DPM Split Repair Sleeve Fuel-Thane with Stainless test valve, 4" FRP to 4" FRP.

SR-RZ 4.8x4.5 ASS	DPM Split Repair Reducer Fuel-Thane, for 4" LCX High Pressure with standard clamps and Stainless Air Test Port.
-------------------	---

Split Test Reducers ~ Continued

# Spilt Test Reducers



*"Better by Design"*

Split Test Reducers ~ Continued

## Split Test Reducers ~ Continued



Part #	Description
SR-RZ 4.9x1.9x1.4 ASS	DPM Split Repair Reducer Fuel-Thane, for 4" FRP or TCI "B" Pipe to 1-1/4 & 1" nominal with Stainless air test port.



Part #	Description
SR-RZ 5.0x2.0 ASS	DPM Split Reducer Fuel-Thane, 5.0" OD Pipe to 2.0" OD Pipe with Stainless air test.
SR-RZ 5.0x2.5 ASS	DPM Split Reducer Fuel-Thane, 5.0" OD Pipe to 2.5" OD Pipe With Stainless Air valve.
SR-RZ 5.0x2.7 ASS	DPM Split Reducer Fuel-Thane, 5.0" OD Pipe to 2.7" OD Pipe with Stainless Air Valve.
SR-RZ 5.0x3.0 ASS	DPM Split Reducer Fuel-Thane, 5.0" OD Pipe to 3.0" OD pipe with Stainless air test.



Part #	Description
SR-RZ 5.0x3.6 ASS	DPM Split Reducer Fuel-Thane, with Stainless air test port 5.0" OD Pipe to 3.5" OD Pipe.
SR-RZ 5.0x4.4 ASS	DPM Split Reducer Fuel-Thane, 125mm over 110mm with Stainless Air Valve.
SR-RZ 5.0x4.5 ASS	DPM Split Reducer Fuel-Thane, for pipes with OD's of 5" and 4.5" with Air Test Valve.

Part #	Description
SR-RZ 5.6x3.6 ASS	DPM Split Repair Reducer Fuel-Thane, for 5" FRP to 3" FRP with Stainless Air Test Port.
SR-RZ 5.6x4.5 ASS	DPM Split Repair Reducer Fuel-Thane, for 5" FRP to 4" FRP with Stainless Air Test Port. (B6 reducer)
SR-RZ 5.6x4.5X3.6 ASS	DPM Split Repair Reducer Fuel-Thane, for 5" Pipe to 4' Corr Dust 3' FRP. with air test includes - URZ 5.6x4.5x3.6, 1 size 96, 1 size 72. 1 size 60 clamps. May be used with SR-IZ 3.6x Series inserts.



*"Better by Design"*

# Spilt Test Reducers

## Spilt Test Reducers ~ Continued



Part #	Description
SR-RZ 6.3x2.5 ASS	DPM Split Repair Reducer Fuel-Thane, for 125mm x 63mm with Stainless air test valve and two clamps.
SR-RZ 6.3x3.6 ASS	DPM Split Repair Reducer Fuel-Thane, for 160 mm to 3" nominal with stainless air test valve.
SR-RZ 6.3x4.5 ASS	DPM Split Repair Reducer Fuel-Thane, for 160 mm to 4" nominal with Stainless Air Test Valve.
SR-RZ 6.3x5.0 ASS	DPM Split Repair Reducer Fuel-Thane, for 160 mm to 125 mm with stainless air test valve.

Part #	Description
SR-RZ 6.7x2.5 ASS	DPM Split Repair Reducer Fuel-Thane, for 6" nominal to 2.5" OD pipe w/ Stainless Air Test Valve.
SR-RZ 6.7x3.6 ASS	DPM Split Repair Reducer Fuel-Thane, for 6" nominal to 4" nominal with Stainless air Valve.
SR-RZ 6.7x4.5 ASS	DPM Split Repair Reducer Fuel-Thane, for 6" nominal to 4" nominal, with Stainless Air Test Port.
SR-RZ 6.7x5.0 ASS	DPM Split Repair Reducer Fuel-Thane, for 6" nominal to 125 mm with air Test Valve.
SR-RZ 6.7x6.7 ASS	DPM Split Repair Sleeve Fuel-Thane, for 6" nominal to 6" nominal, w/ Stainless Air Test Port.



Part #	Description
SR-RZ 8x4 ASS	DPM Split Repair Reducer FuelThane 8" Steel or FRP to 4" Steel or FRP with Stainless air test.
SR-RZ 8x6 ASS	DPM Split Repair Reducer FuelThane 8" Steel or FRP to 6" Steel or FRP with stainless air test valve.



Part #	Description
SR-RZ 10x6 ASS	DPM Split Repair Reducer FuelThane 10" Steel or FRP to 6" Steel or FRP with Stainless air test.

Spilt Test Reducers ~ Continued





Eccentric Split Test Reducers



Part #	Description
SR-RZ 3.6x2.5 EASS	DPM Split Repair Eccentric Reducer Fuel-Thane, for 3" FRP to 2" FRP and flex Pipes with Stainless Air Test Port.
SR-RZ 3.6x3.0 EASS	DPM Split Repair Reducer Fuel-Thane, for 3" FRP to 2" Bell x Male or Female with Stainless Air Test Port.
SR-RZ 4.5x3.6 EASS	DPM Split Repair Reducer Fuel-Thane, for 4" FRP to 3" FRP, Eccentric W/Stainless Air Test Port.
SR-RZ 6.7x4.5 EASS	DPM Split Repair Reducer Fuel-Thane, for 6" nominal to 4" nominal, Eccentric W/ Stainless air test valve.



*"Better by Design"*

# Split Repair Kits

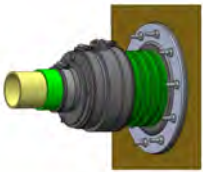
Front Plate



Part #	Description
SR-4SFP	DPM Split 4 Stud Front Plate For, Environ, APT, and Weaver.
SR-8SFP	DPM Split 8 Stud Front Plate For, Environ, APT, and Weaver.
SR-10SFP	DPM Split 10 Stud Front Plate For, Environ, APT, and Weaver.

Front Plate

Corrugated Duct Closure Kits for 3.5" Corrugated Ducting



Part #	Description
SR-CDCK-3.5x2.0	DPM Split Corrugated Duct Closure Kit for Corrugated Ducts with an outside diameter of 3.5". This kit seals the corrugated ducting and fuel carrying pipe so a hydrostatic test can be performed. This kit does not repair the sump penetration. Includes: SR-IZ 4.5x3.6 Insert USLZ 4.5x4.5 Sleeve, UECZ 4.5x3.6 Eccentric UMSZ 3.6x2.0 Multi-Sync Reducer SR-CDS & SR-CDS OPW Corrugated Duct seal, SR-CDIZ 3-2.0 Corrugated duct insert SR-RFP plug, screw and clamps Requires 9 oz of CH-DBF III fill & Paint order separately.
SR-CDCK-3.5x2.5	DPM Split Corrugated Duct Closure Kit for Corrugated Ducts with an outside diameter of 3.5". This kit seals the corrugated ducting and fuel carrying pipe so a hydrostatic test can be performed. This kit does not repair the sump penetration. Includes: SR-IZ 4.5x3.6 Insert USLZ 4.5x4.5 Sleeve, UECZ 4.5x3.6 Eccentric UMSZ 3.6x2.5 Multi-Sync Reducer SR-CDS & SR-CDS OPW Corrugated Duct seal, SR-CDIZ 3-2.5 Corrugated duct insert SR-RFP plug, screw and clamps Requires 9 oz of CH-DBF III fill & Paint order separately.
SR-CDCK-5.0x1.9	DPM Split Corrugated Duct Closure Kit for Corrugated Ducts with an outside diameter of 4.5"-5.0". This kit seals the corrugated ducting and fuel carrying pipe that exits concentric with the ducting so a hydrostatic test can be performed. This kit does not repair the sump penetration. Includes: SR-FB 4.9x4.5 UECZ-4.5x3.6 eccentric UMSZ 3.6x1.9 Multi-Sync Reducer SR-CDS-W Corrugated Duct Seal, SR-CDS-N OPW Corrugated Duct Seal SR-CDI 4-1.9 Corrugated Duct insert SR-RFA Plug, Screw & Clamps measure pipe with calipers to assure the correct kit is ordered.

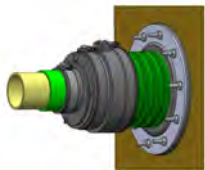
# Split Repair Kits



*"Better by Design"*

Corrugated Duct Closure Kit 4.5-5.0" OD

## Corrugated Duct Closure Kit 4.5-5.0" OD Corrugated Ducting ~ Continued



Part #	Description
SR-CDCK-5.0x2.0	DPM Split Corrugated Duct Closure Kit for Corrugated Ducts with an outside diameter of 4.5"-5.0". This kit seals the corrugated ducting and fuel carrying pipe that exits concentric with the ducting so a hydrostatic test can be performed. This kit does not repair the sump penetration. Includes: SR-FB 4.9x4.5 UECZ-4.5x3.6 Eccentric UMSZ 3.6x2.0 Multi-Sync Reducer SR-CDS Corrugated Duct Seal, SR-CDS OPW Corrugated Duct Seal SR-CDI 4-2.0 Corrugated Duct insert SR-RFA Plug, Screw & Clamps measure pipe with calipers to assure the correct kit is ordered.
SR-CDCK-5.0x2.5	DPM Split Corrugated Duct Closure Kit for Corrugated Ducts with an outside diameter of 4.5"-5.0". This kit seals the corrugated ducting and fuel carrying pipe that exits concentric with the ducting so a hydrostatic test can be performed. This kit does not repair the sump penetration. Includes: SR-FB 4.9x4.5 UECZ 4.5x3.6 Eccentric UMSZ 3.6x2.5 Multi-Sync Reducer SR-CDS Corrugated Duct Seal, SR-CDS OPW Corrugated Duct Seal SR-CDI 4-2.5 Corrugated Duct insert SR-RFA Plug, Screw & Clamps measure pipe with calipers to assure the correct kit is ordered.

## 3" Corrugated Duct Inserts



Part #	Description
SR-CDIZ 3-1.9	DPM Split Repair 3" Nominal Corrugated Duct Insert, Fuel Thane for pipes with OD's of 1.9".
SR-CDIZ 3-2.0	DPM Split Repair 3" Nominal Corrugated Duct Insert, Fuel Thane for pipes with OD's of 2".
SR-CDIZ 3-2.2	DPM Corrugated Duct Insert for 3" corrugated ducting to pipes with OD's of 2.2".
SR-CDIZ 3-2.3	DPM Corrugated Duct Insert for 3" corrugated ducting to pipes with OD's of 2.3".
SR-CDIZ 3-2.5	DPM Split Repair 3" Nominal Corrugated Duct Insert, Fuel Thane for pipes with OD's of 2.4".
SR-CDIZ 3-Plug	DPM Split repair 3" Nominal Corrugated Duct Plug, Fuel Thane for field drilling.



*"Better by Design"*

# Split Repair Kits

## 4" Corrugated Duct Inserts



Part #	Description
SR-CDIZ 4-1.4	DPM Split Repair 4" Nominal Corrugated Duct Insert, Fuel Thane for pipes with OD's of 1.2 to 1.4" - Clamps 1-60.
SR-CDIZ 4-1.6	DPM Split Repair 4" Nominal Corrugated Duct Insert, Fuel Thane for pipes with OD's of 1.4 to 1.6" - Clamps 1-60.
SR-CDIZ 4-1.7	DPM Split Repair 4" Nominal Corrugated Duct Insert, Fuel Thane for pipes with OD's of 1.6 to 1.7" - Clamps 1-60.

Part #	Description
SR-CDIZ 4-1.8	DPM Split Repair 4" Nominal Corrugated Duct Insert, Fuel Thane for pipes with OD's of 1.7 to 1.8" - Clamps 1-60.
SR-CDIZ 4-1.9	DPM Split Repair 4" Nominal Corrugated Duct Insert, Fuel Thane for pipes with OD's of 1.8 to 1.9" - Clamps 1-60.
SR-CDIZ 4-2.0	DPM Split Repair 4" Nominal Corrugated Duct Insert, for pipes with OD's of 1.9 to 2.0" - Clamps 1-60.
SR-CDIZ 4-2.1	DPM Split Repair 4" Nominal Corrugated Duct Insert, Fuel Thane for pipes with OD's of 2.1".
SR-CDIZ 4-2.2	DPM Split Repair 4" Nominal Corrugated Duct Insert, Fuel Thane for pipes with OD's of 2.0 to 2.2" - Clamps 1-60.
SR-CDIZ 4-2.3	DPM Split Repair 4" Nominal Corrugated Duct Insert, Fuel Thane for pipes with OD's of 2.2 to 2.3" - Clamps 1-60.
SR-CDIZ 4-2.4	DPM Split Repair 4" Nominal Corrugated Duct Insert, Fuel Thane for pipes with OD's of 2.2 to 2.4" - Clamps 1-60.
SR-CDIZ 4-2.5	DPM Split Repair 4" Nominal Corrugated Duct Insert, Fuel Thane for pipes with OD's of 2.4 to 2.5" - Clamps 1-60.
SR-CDIZ 4-2.7	DPM Split Repair 4" Nominal Corrugated Duct Insert, Fuel Thane for pipes with OD's of 2.5 to 2.7" - Clamps 1-60.
SR-CDIZ 4-2.8	DPM Split Repair 4" Nominal Corrugated Duct Insert, Fuel Thane for pipes with OD's of 2.8" - Clamps 1-60.
SR-CDIZ 4-2.9	DPM Split Repair 4" Nominal Corrugated Duct Insert, Fuel Thane for pipes with OD's of 2.7 to 2.9" - Clamps 1-60.
SR-CDIZ 4-3.0	DPM Split Repair 4" Nominal Corrugated Duct Insert, Fuel Thane for pipes with OD's of 2.9 to 3.0" - Clamps 1-60.
SR-CDIZ 4-Plug	DPM Split repair 4" Nominal Corrugated Duct Plug, Fuel Thane for field drilling.

## Corrugated Duct Seal for Lined Corrugated Ducting



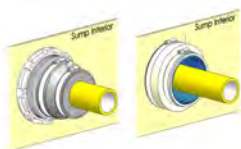
Part #	Description
SR-CDS N	DPM SPLIT Corrugated Duct Seal for Lined Ducting for 4" and smaller corrugated ducting.
SR-CDS W	DPM SPLIT Corrugated Duct Seal for 4" and smaller corrugated ducting.

# Split Repair Kits



*"Better by Design"*

## Repair Boot For TCI 3950 Fitting



Part #	Description
SR-FB 5.9x4.5	DPM Split Repair Boot for TCI 3950, Course or Fine Thread.

## Cuff Repair Kits



Part #	Description
SR-MKZ TCI Cuff -2.0	DPM Split Repair Kit for TCI Large or Medium Cuff Includes: SR-BR 6.7x5.3 Cuff Bonding Ring SR-BR 6.7x5.6 Cuff Bonding Ring SR-SZ 6.7.x6.7 Sleeve w/fillport SR-EC 6.7x5.0 Eccentric SR-MS 5.0x2.0 Multi-Sync (specify size) SR-RFA Plug #116 clamps 4 each #80 clamp 1 each #40 clamp 1 each
SR-MKZ TCI Cuff -2.5	DPM Split Repair Kit for TCI Large or Medium Cuff Includes: SR-BR 6.7x5.3 Cuff Bonding Ring SR-BR 6.7x5.6 Cuff Bonding Ring SR-SZ 6.7.x6.7 Sleeve w/fillport SR-EC 6.7x5.0 Eccentric SR-MS 5.0x2.5 Multi-Sync (specify size) Sr-RFA Plug #116 clamps 4 each #80 clamp 1 each #40 clamp 1 each
SR-MKZ TCI Cuff -2.7	DPM Split Repair Kit for TCI Large or Medium Cuff Includes: SR-BR 6.7x5.3 Cuff Bonding Ring SR-BR 6.7x5.6 Cuff Bonding Ring SR-SZ 6.7.x6.7 Sleeve w/fillport SR-EC 6.7x5.0 Eccentric SR-MS 5.0x2.7 Multi-Sync (specify size) SR-RFA Plug #116 clamps 4 each #80 clamp 1 each #40 clamp 1 each
SR-MKZ TCI Cuff -3.0	DPM Split Repair Kit for TCI Large or Medium Cuff Includes: SR-BR 6.7x5.3 Cuff Bonding Ring SR-BR 6.7x5.6 Cuff Bonding Ring SR-SZ 6.7.x6.7 Sleeve w/fillport SR-EC 6.7x5.0 Eccentric SR-MS 5.0x3.0 Multi-Sync (specify size) SR-RFA Plug #116 clamps 4 each #80 clamp 1 each #40 clamp 1 each





*"Better by Design"*

# Split Repair Kits

## Cuff Repair Kits ~ Continued



Part #	Description
SR-MKZ TCI Cuff -3.6	DPM Split Repair Kit for TCI Large or Medium Cuff Includes: SR-BR 6.7x5.3 Cuff Bonding Ring SR-BR 6.7x5.6 Cuff Bonding Ring SR-SZ 6.7.x6.7 Sleeve w/fillport SR-EC 6.7x5.0 Eccentric SR-MS 5.0x3.0 Multi-Sync (specify size) SR-RFA Plug #116 clamps 4 each #80 clamp 1 each #40 clamp 1 each
SR-MKZ TCI Cuff Sm-1.1	DPM Split Repair Kit for TCI Small Cuff Includes: SR-BR 3.5x3.2 Cuff Bonding Ring SR-SZ 3.5.x3.5 Sleeve w/fillport SR-EC 3.5x2.6 Eccentric SR-MS 2.6x1.1 Multi-Sync SR-RFA Plug #60 clamps 4 each #44 clamp 1 each #20 clamp 1 each
SR-MKZ TCI Cuff Sm-1.4	DPM Split Repair Kit for TCI Small Cuff Includes: SR-BR 3.5x3.2 Cuff Bonding Ring SR-SZ 3.5.x3.5 Sleeve w/fillport SR-EC 3.5x2.6 Eccentric SR-MS 2.6x1.4 Multi-Sync SR-RFA Plug #60 clamps 4 each #44 clamp 1 each #20 clamp 1 each

## Remote Fill Assemblies



Part #	Description
SR-RFA	DPM Remote fill assembly for filling difficult to reach repair boots. Includes RFA-Male, RFA-Female, RFA Tube bonded together 2 ft long.
SR-RFA Tube	DPM Remote fill Tubing 1/2" ID (may be solvent welded) 100 ft roll.
SR-RFA Tube x Female	DPM Remote Fill Female Adaptor Tubing to Female adaptor (may be solvent welded).
SR-RFA Tube x Male	DPM Remote Fill Adaptor Tube x Male fittings (may be solvent welded).
SR-RFA Tube x Tube	DPM Remote Fill Adaptor Tube to Tube (may be solvent welded).

Cuff Repair Kits ~ Continued

# Split Repair Kits



*"Better by Design"*

Shallow Dispenser Pan Repair Kits

## Shallow Dispenser Pan Repair Kits



Part #	Description
SR-RKZ 5-SDP	DPM Split Repair Kit Fuel-Thane, for 1-1/2 & 2" Environ Shallow Dispenser Pan Repairs Includes: SR-RZ5-2.4 w/fill port- knife split, 1 ea. SR-IZ 2.4x1.9, 1 ea. IA 2.4x1.9 split, 2 clamps & 5 ea 10-24 flange nuts & RFA Plug.
SR-RKZ 6-SDP	DPM Split Repair Kit Fuel-Thane, for 1-1/2 & 2" TCI Shallow Dispenser Pan Repairs Includes: SR-RZ6-2.4 w/fill port-knife split, 1 ea. SR-IZ 2.4x1.9, 1 ea. IA 2.4x1.9 split, 2 clamps & 6 ea 10-24 flange nuts & RFA Plug.

## Spill Container Liners



Inserted  
Spill  
Container  
Liner

Actual Spill Container Liner is Black in color. Cut away just shown for clarity.

Part #	Description
SR-SCL	DPM Spill Container Liner Kit Specify EBW-702, EBW-705, EBW-705D, EMW-A1003, EMW-A1004, EMW-A1005, Fairfield SCM3, Fairfield SCM-4, OPW-1, OPW-1C, OPW-84, OPW-2100, OPW-2105, OPW-6111, Pomeco 111, Pomeco 112, Pomeco 114, Universal-70C. Check with factory for custom liners.
SR-SCL-15gal	DPM Spill Container Liner Kit for 15 Gallon. Specify Manufacturer and model.
SR-SCL-OPW 2100	DPM Spill Container Liner Kit OPW-2100. Liner will be built to 13" tall. Check with factory for custom liners.

## 3 Step Transition Repair Kit



Part #	Description
SR-TK 5.6x4.5x3.6	DPM Split Repair Kit used for transitions form below grade 5.0 to 5.6" OD pipe to 4.5" corrugated Ducting to various pipes. Includes 1- ea SR-IZ 3.6x2.0 1 ea: SR-IZ 3.6x1.5x1.5 1 ea: SR-IZ 3.6x1.1x1.1 1 ea: 1 oz DGK, 1 ea: CH-DBC II 1 ea . CH-DEB 50ml 1 ea. SR-CDS W 1 ea. SR-CDS N 1 ea. PF-AV-2 shipped loose for installation in selected insert.



*"Better by Design"*

# Split Repair Kits

Turbin Riser Repair Kit



Part #	Description
SR-TRK 14x4.5	DPM Turbine Riser Repair Kit. Includes a 14 stud split urethane boot with 14 tech screws, fill port plug. Order chemicals separately.

Tank Sump Seam Repair Kit



Part #	Description
SR-TS SRK	DPM Seam Repair Kit for Sumps Consisting of 1 each CH-DEB Bulk 5# Epoxy, 4 each CH-DBC II Cleaner, 1 each CH-DRP 32oz Polysulfide Paint, 1 each case of 12 CH-DSP-4 Super Putty, 2 each CH-DAS II 50 ml Aqua Seal, Spatula & Stirring Stick.

Caps



Part #	Description
SR-UI 2.4xCAP	DPM End Cap, Fuel-Thane, for 2" nominal pipe.
SR-UI 3.6xCAP	DPM End Cap, Fuel-Thane, for 3" nominal pipe.
SR-UI 4.5xCAP	DPM End Cap, Fuel-Thane, for 4" nominal pipe.
SR-UI 5.6xCAP	DPM End Cap, Fuel-Thane, for 5" nominal pipe, includes Clamp.
SR-UI 6.7xCAP	DPM End Cap, Fuel-Thane, for 6" nominal pipe, includes Band clamp.

Plugs



Part #	Description
SR-UI 1.4xPlug	DPM Plug Fuel-Thane, Blind Plug 1.3" OD for field drilling.
SR-UI 1.5xPlug	DPM Insert Fuel-Thane, blind Plug for field drilling.
SR-UI 2.4xPlug	DPM Plug Fuel-Thane, Blind Plug 2.3" OD for field drilling.
SR-UI 2.5xPlug	DPM Plug Fuel-Thane, Blind Plug 2.4" OD for field drilling.
SR-UI 3.0xPlug	DPM Plug Fuel-Thane, Blind Plug 2.9" OD for Field Drilling.
SR-UI 3.6xPlug	DPM Plug Fuel-Thane, blind Plug 3.5" OD for field drilling.

Turbin Riser Repair Kit

# Split Repair Kits



*"Better by Design"*

## Plugs ~ Continued

Plugs ~ Continued



Part #	Description
SR-UI 4.5xPlug	DPM Plug Fuel-Thane, Blind Plug 4.4" OD or field drilling.
SR-UI 6.0xPlug	DPM Plug Fuel-Thane, Blind Plug 5.9" OD for field drilling.
SR-UI 6.7xPlug	DPM Plug Fuel-Thane, Blind Plug 6.7" OD for field drilling.

## Vapor Recovery Closure Kits



Part #	Description
SR-VRCK-2	DPM 2" Vapor recovery closure Kit includes, 1 ea. UVRC-2 Vapor recovery plugs 1 ea. IA 2.4xCap 1 ea. size 40 clamps 1 ea. DBB V Bonder 4 ea. DSM-III Static mixers 1 ea. DBC Cleaner
SR-VRCK-3	DPM 3" Vapor recovery closure Kit includes, 1 ea. UVRC-3 Vapor recovery plugs 1 ea. IA 3.6xCap 1 ea. size 60 clamps 1 ea. DBB V Bonder 2 ea. DSM-III Static mixers 1 ea. DBC Cleaner



*"Better by Design"*

# Split Inserts

Split Inserts (Donuts)



Part #	Description
SR-IZ 1.4x.375	DPM Split Repair Insert Fuel-Thane, from 1" nominal to .375".
SR-IZ 1.4x.7	DPM Split Repair Insert Fuel-Thane, from 1" nominal to 1/2" copper.
SR-IZ 1.4x.8	DPM Split Repair Insert Fuel-Thane, from 1" nominal to .72" for cables.
SR-IZ 1.4x.9	DPM Split Repair Insert Fuel-Thane, from 1" nominal to 1/2" nominal.
SR-IZ 1.4x1.1	DPM Split Repair Insert Fuel-Thane, from 1" nominal to 3/4" nominal.
SR-IZ 1.4x1.2	DPM Split Repair Insert Fuel-Thane, from 1" nominal to PVC coated 3/4" nominal.

Part #	Description
SR-IZ 2.4x.9	DPM Split Repair Insert Fuel-Thane, from 2" nominal to 1/2" nominal.
SR-IZ 2.4x1.1	DPM Split Repair Insert Fuel-Thane, from 2" nominal to 3/4" nominal.
SR-IZ 2.4x1.4	DPM Split Repair Insert Fuel-Thane, from 2" nominal to 1" nominal.
SR-IZ 2.4x1.6	DPM Split Repair Insert Fuel-Thane, from 2" nominal to 1.6".
SR-IZ 2.4x1.7	DPM Split Repair Insert Fuel-Thane, from 2" nominal to 1-1/4" nominal.
SR-IZ 2.4x1.8	DPM Split Repair Insert Fuel-Thane, from 2" nominal to 1.8" custom pipe.
SR-IZ 2.4x1.9	DPM Split Repair Insert Fuel-Thane, from 2" nominal to 1-1/2" nominal.
SR-IZ 2.4x2.0	DPM Split Repair Insert Fuel-Thane, from 2" nominal to 1-1/2" flex pipe.

Part #	Description
SR-IZ 2.5x1.1	DPM Split Repair Insert Fuel-Thane, from 2" nominal flex pipe to 3/4" pipe.
SR-IZ 2.5x1.4	DPM Split Repair Insert Fuel-Thane, from 2" nominal flex pipe to 1" rigid conduit.
SR-IZ 2.5x1.5	DPM Split Repair Insert Fuel-Thane, from 2" nominal flex pipe to 1.5" OD pipe.
SR-IZ 2.5x1.7	DPM Split Repair Insert Fuel-Thane, from 2" nominal flex pipe to 1-1/2" APT D flex pipe.
SR-IZ 2.5x1.8	DPM Split Repair Insert Fuel-Thane, from 2" nominal flex pipe to 1-1/2" OPW Pisces flex pipe.
SR-IZ 2.5x1.9	DPM Split Repair Insert Fuel-Thane, from 2" nominal flex pipe to 1-1/2" APT XP flex pipe.
SR-IZ 2.5x2.0	DPM Split Repair Insert Fuel-Thane, from 2" nominal flex pipe to 1-1/2" flex pipe.
SR-IZ 2.5x2.2	DPM Split Repair Insert Fuel-Thane, from 2.2" pipe to 2.5" flex pipe.
SR-IZ 2.5x2.3	DPM Split Repair Insert Fuel-Thane, from 2" nominal flex pipe to 1.5" double trac.

Split Inserts (Donuts)

# Split Inserts



*"Better by Design"*

Split Inserts (Donuts) ~ Continued

## Split Inserts (Donuts) ~ Continued



Part #	Description
SR-IZ 3.0x1.4	DPM Split repair Insert Fuel-thane from 3.0" to 1.4" (1" nominal).
SR-IZ 3.0x2.5	DPM Split repair Insert Fuel-thane from 3.0" to 2.5".
SR-IZ 3.0x2.7	DPM Split repair Insert Fuel-thane from 3.0" to 2.7".

Part #	Description
SR-IZ 3.6x1.1	DPM Split repair Insert Fuel-thane from 3" Nominal to 1" Nominal.
SR-IZ 3.6x1.1x1.1	DPM Split Repair Insert Fuel-Thane, from 3" nominal to two 3/4" nominal pipes.
SR-IZ 3.6x1.4	DPM Split Repair Insert Fuel-Thane, from 3" nominal to 1" nominal.
SR-IZ 3.6x1.5x1.5	DPM Split Repair Insert Fuel-Thane, from 3" nominal to two 1-1/2" nominal pipes.
SR-IZ 3.6x1.6	DPM Split Repair Insert Fuel-Thane, from 3" nominal to 40 mm.
SR-IZ 3.6x1.7	DPM Split Repair Insert Fuel-Thane, from 3" nominal to 1-1/4" nominal.
SR-IZ 3.6x1.8	DPM Split Repair Insert Fuel-Thane, from 3" nominal to 1.8" custom pipe.
SR-IZ 3.6x1.9	DPM Split Repair Insert Fuel-Thane, from 3" nominal 1-1/2" nominal.
SR-IZ 3.6x2.0 Hex	DPM Split Repair Insert Fuel-Thane, from 3" nominal to 1-1/2" nominal (1.94" face to face) hex nut.
SR-IZ 3.6x2.0	DPM Split Repair Insert Fuel-Thane, from 3" nominal to 1-1/2" flex pipe.
SR-IZ 3.6x2.2	DPM Split Repair Insert Fuel-Thane, from 3" nominal to custom flex pipe.
SR-IZ 3.6x2.4	DPM Split Repair Insert Fuel-Thane, from 3" nominal to 2" nominal.
SR-IZ 3.6x2.5	DPM Split Repair Insert Fuel-Thane, from 3" nominal to 2" flex.
SR-IZ 3.6x2.5 Hex	DPM Split Repair Insert Fuel-Thane, from 3" nominal to 2" nominal (2.4" face to face) hex nut.
SR-IZ 3.6x2.7	DPM Split Repair Insert Fuel-Thane, from 3" nominal to custom flex pipe.
SR-IZ 3.6x2.9	DPM Split Repair Insert Fuel-Thane, from 3" nominal to custom flex pipe.
SR-IZ 3.6x3.0	DPM Split Repair Insert Fuel-Thane, from 3" nominal to 75 mm.
SR-IZ 3.6x3.2	DPM Split Repair Insert Fuel-Thane, from 3" nominal to 3.2" OD Pipes.





*"Better by Design"*

# Split Inserts

Split Inserts (Donuts) ~ Continued



Part #	Description
SR-IZ 4.5x1.4	DPM Split Repair Insert Fuel-Thane, from 4" nominal to 1" nominal.
SR-IZ 4.5x2.0	DPM Split Repair Insert Fuel-Thane, from 4" nominal to 1 1/2" nominal flex pipe.
SR-IZ 4.5x2.2	DPM Split Repair Insert Fuel-Thane, from 4" nominal to 2.2" Actual ID.
SR-IZ 4.5x2.4	DPM Split Repair Insert Fuel-Thane, from 4" nominal to 2" nominal.
SR-IZ 4.5x2.5	DPM Split Repair Insert Fuel-Thane, from 4" nominal to 2" nominal flex pipe.
SR-IZ 4.5x2.7	DPM Split Repair Insert Fuel-Thane, from 4" nominal to 2.7" Actual ID.
SR-IZ 4.5x2.9	DPM Split Repair Insert Fuel-Thane, from 4" nominal to 2.9" Actual ID.
SR-IZ 4.5x3.0	DPM Split Repair Insert Fuel-Thane, from 4" nominal to 3" Actual ID.
SR-IZ 4.5x3.6	DPM Split Repair Insert Fuel-Thane, from 4" nominal to 3" nominal.
SR-IZ 4.5x3.8	DPM Split Repair Insert Fuel-Thane, from 4" nominal to 3" LCX Pipe.
SR-IZ 4.5x3.9	DPM Split Repair Insert Fuel-Thane, from 4" nominal to TCI 'A' Pipe.
SR-IZ 4.5x4.0	DPM Split Repair Insert Fuel-Thane, from 4" nominal to 4" OD Pipe.



Part #	Description
SR-IZ 4.8x3.6	DPM Split Repair Insert Fuel-Thane, from 4.8" to 3" nominal.
SR-IZ 4.8x3.8	DPM Split Repair Insert Fuel-Thane, from 4.8" to 3" LCX.
SR-IZ 4.8x4.5	DPM Split Repair Insert Fuel-Thane, from 4.8" to 4" nominal.



Part #	Description
SR-IZ 5.0x3.6	DPM Split Repair Insert Fuel-Thane, from 125 mm to 3" nominal.
SR-IZ 5.0x3.9	DPM Split Repair Insert Fuel-Thane, from 125 mm to custom pipe.
SR-IZ 5.0x4.5	DPM Split Repair Insert Fuel-Thane, from 125 mm to 4" nominal.

Split Inserts (Donuts) ~ Continued

# Split Inserts



*"Better by Design"*

Split Inserts (Donuts) ~ Continued

## Split Inserts (Donuts) ~ Continued



Part #	Description
SR-IZ 6.0x3.0	DPM Split Repair Insert Fuel-Thane, from 6.0" to 3" OD pipe.
SR-IZ 6.0x3.6	DPM Split Repair Insert Fuel-Thane, from 6.0" to 3" nominal.
SR-IZ 6.0x3.9	DPM Split Insert Fuel-Thane, converts 6.0" to 3.9".
SR-IZ 6.0x4.5	DPM Split Insert Fuel-Thane, converts 6.0" to 4.5".

Part #	Description
SR-IZ 6.7x2.0	DPM Split Repair Insert Fuel-Thane, from 6" Nominal to 1 1/2" nominal flex.
SR-IZ 6.7x3.6	DPM Split Repair Insert Fuel-Thane, from 6" Nominal to 3" nominal.
SR-IZ 6.7x4.0	DPM Split Repair Insert Fuel-Thane, from 6" FRP to 4.0" OD Pipes.
SR-IZ 6.7x4.5	DPM Split Repair Insert Fuel-Thane, from 6" nominal to 4" nominal.
SR-IZ 6.7x5.0	DPM Split Repair Insert Fuel-Thane, from 6" nominal to 125 mm.
SR-IZ 6.7x5.2	DPM Split Repair Insert Fuel-Thane, from 6" nominal to 130 mm.
SR-IZ 6.7x6.0	DPM Split Repair Insert Fuel-Thane, from 6" nominal to 150 mm.



*"Better by Design"*

**Industrial**

## Large Industrial Penetration Fittings



Part #	Description
IN-14S-8.7	DPM 14 Stud Penetration Single Sided for 8" Ameron Includes - 1 14SDF-8.7, 1 14SFP, 1 bag of 14 Back Plate bolts, 1 bag of 14 flange nuts, 1 bag of 28 1/4" flat washers, Instructions.

Part #	Description
IN-B11-6C	DPM Bulkhead Flanged with neoprene gasket, for 6" Pipe Specify diameter.
IN-B11-8C	DPM Bulkhead Flanged with neoprene gasket, for 8" Pipe Specify diameter.
IN-B11-8F	DPM Bulkhead Flanged with neoprene gasket, for 8" Pipe with flat surface.
IN-B13-10C	DPM Bulkhead Flanged with neoprene gasket, for 10" Pipe Specify diameter.
IN-B13-10F	DPM Bulkhead Flanged with neoprene gasket, for 10" Pipe with flat surfaces.
IN-B15-12C	DPM Bulkhead Flanged with neoprene gasket, for 12" Pipe Specify diameter.
IN-B15-12F	DPM Bulkhead Flanged with neoprene gasket, for 12" Pipe with flat surfaces.
IN-B17-14C	DPM Bulkhead Flanged with neoprene gasket, for 14" Pipe. Specify Diameter
IN-B17-14F	DPM Bulkhead Flanged with neoprene gasket, for 14" Pipe with flat surfaces

## Large Industrial Test Reducers



Part #	Description
IN-RA 10x6 ASS	DPM Terminating Reducer, 10" Steel or FRP to 6" Steel or FRP, with stainless air test valve.
IN-RA 10x8 ASS	DPM Terminating Reducer, 10" Steel or FRP to 8" Steel or FRP with air test valve.
IN-RA 12x10 ASS	DPM Terminating Reducer, 12" Steel or FRP to 10" Steel or FRP with stainless air test valve.
IN-RA 12x6 ASS	DPM Terminating Reducer, 12" Steel or FRP to 6" Steel or FRP with Stainless Air Test Port.
IN-RA 12x8 ASS	DPM Terminating Reducer, 12" Steel or FRP to 8" Steel or FRP, with stainless air test valve.
IN-RA 180x110 ASS	DPM Terminating Reducer 180mm to 110mm with Stainless air test valve.
IN-RA 250x160 ASS	DPM Terminating Reducer 250mm to 160mm with Stainless air test valve.



## Large Industrial Test Reducers ~ Continued



Part #	Description
IN-RA 6x3 ASS	DPM Terminating Reducer, 6" Steel or FRP to 3" Steel or FRP, with stainless air valve.
IN-RA 6x4 ASS	DPM Terminating Reducer, 6" Steel or FRP to 4" Steel or FRP with stainless test valve.
IN-RA 8x4 ASS	DPM Terminating Reducer, 8" Steel or FRP to 4" Steel or FRP with Stainless Air Test Port.
IN-RA 8x6 ASS	DPM Terminating Reducer, 8" Steel or FRP to 6" Steel or FRP with Stainless Air Test Port.



*"Better by Design"*

Diversified Aqua Seal



Part #	Description
CH-DAS	DPM Aqua Seal, 10.5 oz, tube.
CH-DAS-II 50ML	DPM Diversified Aqua Seal 50ML Dual Cartridge with 1 each SM-III (static mixer)- for use with DAG III applicator gun.
CH-DAS-II 50ML-FS	DPM Aqua Seal 50ML Dual Cartridge Fast Set with 1 each SM-III (static mixer)- for use with DAG III applicator gun.
CH-DAS-II 600ML	DPM Aqua Seal, 20 oz dual cartridge set, with 1 Static mixer.

Bulkhead Bonder



Part #	Description
CH-DBB V	DPM Diversified Bulkhead Bonder 50ML Dual Cartridge Methyl Methacrylate Adhesive with 1each SM- static mixer- for use with DAG III applicator gun.

All Purpose Cleaner



Part #	Description
CH-DBC II	DPM Bulkhead Cleaner -1 each aerosol can.

Diversified Aqua Seal



## Polysulfide Products

Polysulfide Products



Part #	Description
CH-DBF III	DPM Bulkhead Fill 20 oz dual cartridge sets (net usable 18 oz) and 2 CH-DSM-IV static mixers per set.

## Epoxy Bonder & Installation Kits



Part #	Description
CH-DEB-50 ml	DPM Epoxy Bonder, 50 ml Twin Tube cartridge Set with SM III Static Mixer.
CH-DEB-Bulk 15#	DPM Epoxy Bonder 15# total A+B (two 1-1/2 gallon pails).
CH-DEB-Bulk 5#	DPM Epoxy Bonder 5# total A+B (two 1/2 gallon pails).
CH-DEB-Bulk13	DPM Epoxy Bonder 13 oz total A+B in Cannisters.



Part #	Description
CH-DEIK-13oz	DPM Epoxy Bonder Installation Kit (Formerly DFIK-13oz) Includes 13 oz of Epoxy Resin Parts A & B, Spatula, Stirring Stick, DBC II Cleaner. 1- DSP-4oz. Installation Instructions Provided.

## Fiberglass Bonder



Part #	Description
CH-DFB-50ml	DPM Fiberglass Bonder 50ML dual cartridge sets and 1 CH-DSM-V static mixer per set.





*"Better by Design"*

Solvent Weld Materials - (Diversified Glue Kits)



Part #	Description
CH-DGK-4	DPM Zip-Tite Solvent Weld Liquid Solvent Weld 4oz Container.

Polysulfide Products



Part #	Description
CH-DRP 1-1/2	DPM Polysulfide Paste 1-1/2 Gallon paste.
CH-DRP 32oz	DPM Polysulfide Paste 32oz Tub.
CH-DRPSL 1-1/2	DPM Polysulfide Paste 1-1/2 Gallon Self Leveling.



Part #	Description
CH-DSG	DPM Sump Gasket for forming a removable/replaceable seal. Product is used extensively on transition sumps where the lid must be removed from time to time.

Epoxy Putty



Part #	Description
CH-DSP-4oz	DPM Super Putty, 2 part backfill putty (net usable 4oz.).

# Accessories



*"Better by Design"*

## Air Test Valves

Air Test Valves



Part #	Description
PF-ABV-1	DPM Bicycle Valve Fitting mates to AV-, AV- & AV- All stainless.
PF-AV-1	DPM Air Valve Fitting Stainless includes, compression style fitting with nut, core and cap.
PF-AV-2	DPM Air Valve Fitting (Barbed style) for Stainless use with 3/16" ID tubing, Includes barbed fitting, core and cap
PF-AV-4	DPM Air Valve with a 1/8 MPT thread by 5/16-32 thread that mates to a PF-ABV-1.

## Corrugated Duct Inserts



Part #	Description
PF-ACDI 3x2.0	DPM 3" Nominal Corrugated Duct Insert, for pipes with OD's of 1.9 to 2.0"
PF-ACDI 4x2.0	DPM 4" Nominal Corrugated Duct Insert, for pipes with OD's of 1.9 to 2.0" - Clamps 1-60
PF-ACDI 4x2.5	DPM 4" Nominal Corrugated Duct Insert, for pipes with an OD of 2.5" - Clamps 1-60

## Accessory - Corrugated Duct Seal (used to fill the outer shell of corrugated ducting to assist in sealing)



Part #	Description
PF-CDS-N	DPM Corrugated Duct Seal-Narrow for lined Corrugated Ducting.
PF-CDS-W	DPM Corrugated Duct Seal-Wide for traditional Corrugated Ducting.

## Corrugated Crush Guard



Part #	Description
PF-CHG	DPM Crush Guard For " Corrugated Ducting.



*"Better by Design"*

## Applicator Guns & Accessories



Part #	Description
CH-DAG	Diversified Applicator Gun-Dual Cartridge manually operated for 20 oz.

## Applicator Guns



Part #	Description
CH-DAG III	Diversified Applicator Gun - Dual Cartridge manually operated for 50ML Cartridges.



Part #	Description
CH-DAG III-M	Diversified Metal Applicator Gun - Dual Cartridge manually operated for 50ML Cartridges.



Part #	Description
CH-DSM-I	Static Mixing Tube Used on 20 oz or 600 ml cartridge sets.



Applicator Guns & Accessories

Applicator Guns & Accessories



Part #	Description
CH-DSM-III	Static Mixing Tube Used with 50 ml cartridge Sets.



Part #	Description
CH-DSM-IV	Static Mixing Tube Used For CH-DBF III cartridge sets.



Part #	Description
CH-DSM-V	Static Mixing Tube Used For CH-DFB cartridge sets.

Tank Sumps & Accessories



Part #	Description
SU-TSA Tool	DPM Tank Sump Adaptor Tool for Bung Mounting.



*"Better by Design"*

Fiberglass Magnetic Lid Retrofit Assemblies



Part #	Description
SU-MLA-Tool	DPM Magnetic Lid Tool: \$525.00 if not returned. If returned in good condition we will credit back \$425.00.





## Under Dispenser Sumps

SU-CFF-2307	2
SU-CFF-2412G	2
SU-CSF	1
SU-RFF 2815	1
SU-RFF 3617	1
SU-RFF 4015B	1
SU-RFF 4015W	1
SU-RFS 2307	1
SU-RFS 2815	1
SU-RFS 3617	1
SU-RFS 3811	1
SU-RFS 4015	1
SU-RSF II-C	1
SU-RSF II-FB	1
SU-RSF-C	1
SU-RSF-FB	1
SU-RSFS	1

## Under Dispenser Containment Accessories

SU-CMB-1.1	4
SU-CMB-1.4	4
SU-DAK	3
SU-DAK BP	3
SU-DAK WO	3
SU-DAK-GE	3
SU-SBA	3
SU-SBA SS	3
SU-SMK	3
SU-SMK-UV	3

## Aboveground Under Dispenser Containment

SU-AGS 2030 FTA1	5
SU-AGS 2030 FTA2	5
SU-AGS 2815-SS	6
SU-AGS 3219	5
SU-AGS 3219 FTA1	5
SU-AGS 3620 FTA2	5
SU-AGS 3620-SS	6
SU-AGS 3620-SS FTA1	6
SU-AGS 3620-SS FTA2	6
SU-AGS-2815	5
SU-AGS-2815 FTA1	5

## DEF Fiberglass Under Dispenser Containment

SU-DEF F-Assy	7
SU-DEF SV	7

## Fiberglass Tank Sumps

SU-TKSF-FL-42	9
---------------	---

SU-TKSF-FL-48	10
SU-TKSF-MB-ML-42	9
SU-TKSF-ML-48	10
SU-TKSK-FL-BM	10
SU-TSFA-FL-42	8
SU-TSFA-FL-48	8
SU-TSFA-FL-BM	9
SU-TSFA-ML-42	8
SU-TSFA-ML-48	8
SU-TSFA-ML-BM	9

## Fiberglass Tank Sump Accessories

SU-SMK	11
SU-SMK-UV	11
SU-SRK	11
SU-TKSF Ext	12
SU-TSA	11

## Fiberglass Magnetic Lid

SU-MAR 34x21	13
SU-MAR 34x23	13
SU-MAR 34x26	13
SU-MAR 34x27	13
SU-MAR 34x28	13
SU-MAR 34x30	13
SU-MAR 34x31	13
SU-MAR 34x32	13
SU-MAR 34x33	13
SU-MAR 34x36	13
SU-MAR 34x36W	13
SU-MAR 34x37	13
SU-MAR 34x38	13
SU-MAR 34x42	13
SU-MAR XXXX	13
SU-MAR-Custom	13
SU-ML	13
SU-MLA Oval	13

## Transition Sumps

SU-TS 24	14
SU-TS 40	14
SU-TS 48	14

## Transition Sump Accessories

SU-TS 24 Ext	15
SU-TS 48 Ext	15
SU-TS-1 1/2WC	15
SU-TS-1WC	15
SU-TS-2SS-24	15
SU-TS-2SS-36	15
SU-TS-2SS-48	15
SU-TS-2SS-60	15
SU-TS-2WC	15

SU-TS-3WC	15
SU-TS-4WC	15

## Vent Sumps

SU-VVR	16
SU-VVS-24-F	16
SU-VVS-40-F	16

## Fiberglass Penetration Fittings

PF-FGR 2.7x2.4 ASS	17
PF-FGR 3.6x2.4 ASS	17
PF-FGR 3.8x3.6 ASS	17
PF-FGR 4.5x3.6 ASS	17
PF-FGR-4Bx4M	17
PF-FGT-2.5-1.155	17
PF-FGT-2.5-1.275	17
PF-FGT-2.5-1.415	17
PF-FGT-2.5-1.515	17
PF-FGT-2.5-1.565	17
PF-FGT-4.5-1.915	17
PF-FGT-4.5-2.015	17
PF-FGT-4.5-2.315	17
PF-FGT-4.5-2.390	17
PF-FGT-4.5-2.515	17
PF-FGT-4.5-2.605	17
PF-FGT-4.5-2.820	17
PF-FGT-4.5-2.945	18
PF-FGT-4.5-3.015	18
PF-FGT-4.5-3.515	18
PF-FGT-4.5-3.575	18
PF-FGT-4.5-APX-40-2.0	18
PF-FGT-4.5-APX-40-2.5	18
PF-FGT-6.0-3.715	18
PF-FGT-6.0-4.415	18
PF-FGT-6.0-4.515	18
PF-FGT-6.0-4.715	18
PF-FGT-6.0-4.940	18

## Penetration Fittings

PF-10D-3.6	24
PF-10D-3.8	24
PF-10D-4.4	24
PF-10D-4.5	24
PF-10D-4.6x2.0	24
PF-10D-4.6x2.5	24
PF-10D-4.6x2.7	24
PF-10D-4.8	24
PF-10D-5.0	24
PF-10F-3.6	25
PF-10F-3.8	25
PF-10F-4.4	25
PF-10F-4.5	25
PF-10F-4.6x2.0	25





PF-10F-4.6x2.5	25	PF-8S-1.9	26	PF-B5D-3.3	22
PF-10F-4.8	25	PF-8S-2.0	26	PF-B5D-3.6	22
PF-10F-5.0	25	PF-8S-2.2	26	PF-B5D-3.8	22
PF-10S-3.6	26	PF-8S-2.4	26	PF-B6-4.4	20
PF-10S-3.8	26	PF-8S-2.5	26	PF-B6-4.5	20
PF-10S-4.4	26	PF-8S-2.7	26	PF-B6-4.8	20
PF-10S-4.5	26	PF-8S-2.9	26	PF-B6-5.0	20
PF-10S-4.6x2.0	26	PF-8S-3.0	26	PF-T10S-3.6	28
PF-10S-4.6x2.5	27	PF-8S-3.3	26	PF-T10S-3.8	28
PF-10S-4.6x2.7	27	PF-8S-3.6	26	PF-T10S-4.4	28
PF-10S-4.8	27	PF-B2-1.1	19	PF-T10S-4.5	28
PF-10S-5.0	27	PF-B2-1.3	19	PF-T10S-4.6x2.0	28
PF-12D-5.2	24	PF-B2-1.4	19	PF-T10S-4.6x2.5	28
PF-12D-6.3	24	PF-B2-41	19	PF-T10S-4.6x2.7	29
PF-12D-6.7	24	PF-B2D-1.1	20	PF-T10S-4.8	29
PF-12D-6.7x4.5	24	PF-B2D-1.3	20	PF-T10S-5.0	29
PF-12S-5.2	27	PF-B2D-1.4	20	PF-T12S-5.2	29
PF-12S-6.3	27	PF-B2D-41	20	PF-T12S-5.6	29
PF-12S-6.7	27	PF-B3.5-1.5	19	PF-T12S-6.3	29
PF-12S-6.7x4.5	27	PF-B3.5-1.6	19	PF-T12S-6.7	29
PF-4D-1.1	22	PF-B3.5-1.7	19	PF-T12S-6.7x4.5	29
PF-4D-1.3	22	PF-B3.5-1.9	19	PF-T4S-1.1	27
PF-4D-1.4	22	PF-B3.5-2.0	19	PF-T4S-1.3	27
PF-4D-41	22	PF-B3.5-2.2	19	PF-T4S-1.4	27
PF-4F-1.1	24	PF-B3.5-2.4	19	PF-T4S-41	27
PF-4F-1.4	24	PF-B3.5-2.5	19	PF-T8S-1.5	27
PF-4S-1.1	25	PF-B3.5-2.7	19	PF-T8S-1.6	27
PF-4S-1.4	25	PF-B3.5-2.7x2.4 A	20	PF-T8S-1.7	27
PF-4S-41	25	PF-B3.5-40x32 A	20	PF-T8S-1.9	28
PF-4S-419	25	PF-B3.5-63x50 A	20	PF-T8S-2.0	28
PF-8D-1.5	23	PF-B3.5D-1.5	21	PF-T8S-2.2	28
PF-8D-1.6	23	PF-B3.5D-1.6	21	PF-T8S-2.4	28
PF-8D-1.7	23	PF-B3.5D-1.7	21	PF-T8S-2.5	28
PF-8D-1.9	23	PF-B3.5D-1.9	21	PF-T8S-2.7	28
PF-8D-2.0	23	PF-B3.5D-2.0	21	PF-T8S-2.9	28
PF-8D-2.2	23	PF-B3.5D-2.2	21	PF-T8S-3.0	28
PF-8D-2.4	23	PF-B3.5D-2.4	21	PF-T8S-3.3	28
PF-8D-2.5	23	PF-B3.5D-2.5	21	PF-T8S-3.6	28
PF-8D-2.7	23	PF-B3.5D-2.7	21		
PF-8D-2.9	23	PF-B5-2.7	19	<b>Flex Connectors</b>	
PF-8D-3.0	23	PF-B5-2.9	19	FC-1.5-FQG-18-CS	31
PF-8D-3.3	23	PF-B5-3.0	19	FC-1.590MSM-18-SS	33
PF-8D-3.6	23	PF-B5-3.3	19	FC-1.5M2F-12-CS	30
PF-8F-2.0	25	PF-B5-3.6	19	FC-1.5M2F-15-CS	30
PF-8F-2.4	25	PF-B5-3.6x2.4 A	20	FC-1.5M2F-18-CS	30
PF-8F-2.5	25	PF-B5-3.8	19	FC-1.5M2F-24-CS	30
PF-8F-2.7	25	PF-B5-3.8x3.5 A	20	FC-1.5M2F-30-CS	30
PF-8F-3.0	25	PF-B5-75x63A	20	FC-1.5M2F-36-CS	30
PF-8F-3.6	25	PF-B5-90x75 A	20	FC-1.5MM-12-CS	30
PF-8S-1.5	26	PF-B5D-2.7	22	FC-1.5MM-15-CS	30
PF-8S-1.6	26	PF-B5D-2.9	22	FC-1.5MM-18-CS	30
PF-8S-1.7	26	PF-B5D-3.0	22	FC-1.5MM-24-CS	30





FC-1.5MM-30-CS	30	FC-3MQM-18-CS	33	PF-IA 3.6x3.3	35
FC-1.5MM-36-CS	30	FC-3MQM-24-CS	33	PF-IA 3.6xCAP	36
FC-1.5MQM-12-CS	30	FC-3MQM-30-CS	33	PF-IA 3.6xPlug	36
FC-1.5MQM-15-CS	30	FC-3MQM-36-CS	33	PF-IA 4.5x1.8	35
FC-1.5MQM-18-CS	30	<b>Inserts, Caps &amp; Plugs</b>		PF-IA 4.5x2.0	35
FC-1.5MQM-24-CS	30	PF-IA 1.4x.375	34	PF-IA 4.5x2.2	35
FC-1.5MQM-30-CS	30	PF-IA 1.4x.5	34	PF-IA 4.5x2.4	35
FC-1.5MQM-36-CS	30	PF-IA 1.4x.6	34	PF-IA 4.5x2.5	35
FC-1.5MSM-12-CS	31	PF-IA 1.4x.8	34	PF-IA 4.5x2.7	35
FC-1.5MSM-15-CS	31	PF-IA 1.4x.9	34	PF-IA 4.5x2.9	35
FC-1.5MSM-15-SS	33	PF-IA 1.4x1.1	34	PF-IA 4.5x3.3	35
FC-1.5MSM-18-CS	31	PF-IA 1.4x1.2	34	PF-IA 4.5x3.6	35
FC-1.5MSM-24-CS	31	PF-IA 1.4xPlug	36	PF-IA 4.5x3.8	35
FC-1.5MSM-24-SS	33	PF-IA 1.5xPlug	36	PF-IA 4.5x3.9	35
FC-1.5MSM-30-CS	31	PF-IA 2.4x.9	34	PF-IA 4.5x4.0	35
FC-1.5MSM-36-CS	31	PF-IA 2.4x1.1	34	PF-IA 4.5x4.2	35
FC-1MM-12-CS	31	PF-IA 2.4x1.4	34	PF-IA 4.5xCAP	36
FC-1MM-15-CS	31	PF-IA 2.4x1.6	34	PF-IA 4.5xPlug	36
FC-1MM-18-CS	31	PF-IA 2.4x1.7	34	PF-IA 4.8x3.6	36
FC-1MM-24-CS	31	PF-IA 2.4x1.8	34	PF-IA 4.8x3.8	36
FC-1MSM-15-CS	31	PF-IA 2.4x1.9	34	PF-IA 4.8x4.5	36
FC-1MSM-18-SS	33	PF-IA 2.4x2.0	34	PF-IA 5.0x3.6	36
FC-1MSM-24-CS	31	PF-IA 2.4xCAP	36	PF-IA 5.0x3.9	36
FC-1MSM-36-CS	31	PF-IA 2.4xPlug	36	PF-IA 5.0x4.5	36
FC-2MM-12-CS	32	PF-IA 2.5x1.1	34	PF-IA 5.6xCAP	36
FC-2MM-15-CS	32	PF-IA 2.5x1.4	34	PF-IA 6.7x3.6	36
FC-2MM-18-CS	32	PF-IA 2.5x1.5	34	PF-IA 6.7x4.5	36
FC-2MM-24-CS	32	PF-IA 2.5x1.7	34	PF-IA 6.7x5.0	36
FC-2MM-30-CS	32	PF-IA 2.5x1.9	34	PF-IA 6.7xCAP	36
FC-2MM-36-CS	32	PF-IA 2.5x2.0	34	PF-IA 6.7xPlug	36
FC-2MQM-12-CS	32	PF-IA 2.5x2.2	34	<b>Centralizers</b>	
FC-2MQM-15-CS	32	PF-IA 2.5xPlug	36	IN-C 3x1	37
FC-2MQM-18-CS	32	PF-IA 3.0x2.5	34	IN-C 3x1 1/2	37
FC-2MQM-24-CS	32	PF-IA 3.0x2.7	34	IN-C 3x1 1/4	37
FC-2MQM-30-CS	32	PF-IA 3.0xPlug	36	IN-C 3x2	37
FC-2MQM-36-CS	32	PF-IA 3.6x1-1/2 Hex	35	IN-C 3x3/4	37
FC-2MSM-12-CS	32	PF-IA 3.6x1.1	35	IN-C 3xCustom	37
FC-2MSM-15-CS	32	PF-IA 3.6x1.4	35	IN-C 4x1	37
FC-2MSM-18-CS	32	PF-IA 3.6x1.6	35	IN-C 4x1 1/2	37
FC-2MSM-18-SS	33	PF-IA 3.6x1.7	35	IN-C 4x2	37
FC-2MSM-24-CS	32	PF-IA 3.6x1.8	35	IN-C 4x3	37
FC-2MSM-24-SS	33	PF-IA 3.6x1.9	35	IN-C 4xCustom	37
FC-2MSM-30-CS	32	PF-IA 3.6x2 Hex	35	IN-C 6x3	37
FC-2MSM-36-CS	32	PF-IA 3.6x2.0	35	IN-C 6x4	37
FC-3MM-12-CS	33	PF-IA 3.6x2.2	35	IN-C 6xCustom	37
FC-3MM-15-CS	33	PF-IA 3.6x2.4	35	<b>Test Reducers</b>	
FC-3MM-18-CS	33	PF-IA 3.6x2.5	35	PF-RA 1.4x1.4 ASS	38
FC-3MM-24-CS	33	PF-IA 3.6x2.7	35	PF-RA 1.6x1.3 ASS	38
FC-3MM-30-CS	33	PF-IA 3.6x2.9	35	PF-RA 2.0x1.6 ASS	38
FC-3MM-36-CS	33	PF-IA 3.6x3.0	35	PF-RA 2.0x1.7 ASS	38
FC-3MQM-12-CS	33	PF-IA 3.6x3.2	35	PF-RA 2.0x1.8 ASS	38
FC-3MQM-15-CS	33				





PF-RA 2.0x2.0 ASS	38	PF-RA 4.5x4.5 ASS	40	SR-FG-S 8-Spacer	46
PF-RA 2.4x1.1 ASS	38	PF-RA 4.8x4.5 ASS	41	SR-FG-S OPW 4-1.4	46
PF-RA 2.4x1.4 ASS	38	PF-RA 4.8x4.5HP ASS	43	SR-FG-S OPW 8-2.7	46
PF-RA 2.4x1.5 ASS	38	PF-RA 4.9x1.9x1.4 ASS	42	SR-FGR 2.7x2.4 ASS	46
PF-RA 2.4x2.0 ASS	38	PF-RA 5.0x1.9 ASS	41	SR-FGR 3.6x2.4 ASS	46
PF-RA 2.5x1.3 ASS	39	PF-RA 5.0x2.0 ASS	41	<b>Penetration Repair Kits</b>	
PF-RA 2.5x2.0 ASS	39	PF-RA 5.0x2.3 ASS	41	PG-S II 10	47
PF-RA 2.5x2.3 ASS	39	PF-RA 5.0x2.4 ASS	41	PG-S II 10 OPW	47
PF-RA 2.5x2.5 ASS	39	PF-RA 5.0x2.5 ASS	41	PG-S II 4	47
PF-RA 2.7x2.0 ASS	39	PF-RA 5.0x3.0 ASS	41	PG-S II 4 OPW	47
PF-RA 2.7x2.4 ASS	39	PF-RA 5.0x3.6 ASS	41	PG-S II 4-M	47
PF-RA 2.7x2.4HP ASS	43	PF-RA 5.0x4.4 ASS	41	PG-S II 4-SM	47
PF-RA 2.7x2.5 ASS	39	PF-RA 5.6x3.6 ASS	41	PG-S II 8	47
PF-RA 2.7x2.7 ASS	39	PF-RA 6.3x2.5 ASS	41	PG-S II 8 OPW	47
PF-RA 3.0x2.0 ASS	39	PF-RA 6.3x3.0 ASS	41	PG-U II 2.0	47
PF-RA 3.0x2.5 ASS	39	PF-RA 6.3x3.6 ASS	41	PG-U II 3.5	47
PF-RA 3.6x1.1 ASS	39	PF-RA 6.3x4.4 ASS	41	PG-U II 4.0	47
PF-RA 3.6x1.4 ASS	39	PF-RA 6.3x5.0 ASS	41	PG-U II 5.0	47
PF-RA 3.6x1.5x1.5 ASS	42	PF-RA 6.7x1.4 ASS	42	PG-U II 6.0	47
PF-RA 3.6x1.6 ASS	39	PF-RA 6.7x1.9 ASS	42	PG-U II 8.5	47
PF-RA 3.6x1.7 ASS	39	PF-RA 6.7x2.3 ASS	42	<b>Spilt Test Reducers</b>	
PF-RA 3.6x1.8 ASS	39	PF-RA 6.7x2.4 ASS	42	SR-RZ 1.4x1.4 ASS	48
PF-RA 3.6x1.9 ASS	39	PF-RA 6.7x2.5 ASS	42	SR-RZ 1.6x1.3 ASS	48
PF-RA 3.6x2.0 ASS	39	PF-RA 6.7x2.7 ASS	42	SR-RZ 1.8x1.4 ASS	48
PF-RA 3.6x2.4 ASS	39	PF-RA 6.7x3.3 ASS	42	SR-RZ 1.9x1.7 ASS	48
PF-RA 3.6x2.4HP ASS	43	PF-RA 6.7x3.6 ASS	42	SR-RZ 10x6 ASS	52
PF-RA 3.6x2.5 ASS	39	PF-RA 6.7x4.4 ASS	42	SR-RZ 2.0x1.6 ASS	48
PF-RA 3.6x2.7 ASS	39	PF-RA 6.7x4.5 ASS	42	SR-RZ 2.0x1.7 ASS	48
PF-RA 3.6x3.0 ASS	40	PF-RA 6.7x4.8 ASS	42	SR-RZ 2.0x1.8 ASS	48
PF-RA 3.6x3.6 ASS	40	PF-RA 6.7x5.0 ASS	42	SR-RZ 2.0x2.0 ASS	48
PF-RA 3.8x3.6 ASS	40	PF-RA 6.7x5.6 ASS	42	SR-RZ 2.5x1.4 ASS	48
PF-RA 3.8x3.6HP ASS	43	PF-RA 6.7x6.7 ASS	42	SR-RZ 2.5x1.5 ASS	48
PF-RA 3.9x1.4 ASS	43	<b>Crossover Fittings</b>		SR-RZ 2.5x2.0 ASS	48
PF-RA 3.9x1.8 ASS	43	PF-Xover-1ft-SS	44	SR-RZ 2.5x2.3 ASS	48
PF-RA 3.9x2.0 ASS	43	PF-Xover-2ft-SS	44	SR-RZ 2.5x2.5 ASS	48
PF-RA 3.9x2.4 ASS	43	PF-Xover-3ft-SS	44	SR-RZ 2.7x2.4 ASS	48
PF-RA 3.9x2.4L ASS	43	PF-Xover-6ft-SS	44	SR-RZ 2.7x2.5 ASS	48
PF-RA 3.9x3.0 ASS	43	PF-Xover-Test	44	SR-RZ 2.7x2.7 ASS	48
PF-RA 3.9x3.9 ASS	43	<b>Fiberglass Split Repair</b>		SR-RZ 3.0x2.5 ASS	49
PF-RA 3.9x3.9L ASS	43	SR-FG-S 10-2.5	45	SR-RZ 3.6x1.1 ASS	49
PF-RA 4.5x1.1 ASS	40	SR-FG-S 10-48	45	SR-RZ 3.6x1.4 ASS	49
PF-RA 4.5x1.4 ASS	40	SR-FG-S 10-Blank	45	SR-RZ 3.6x1.5x1.5 ASS	49
PF-RA 4.5x1.4x1.4 ASS	42	SR-FG-S 10-Spacer	46	SR-RZ 3.6x1.6 ASS	49
PF-RA 4.5x1.9 ASS	40	SR-FG-S 4-1.4	45	SR-RZ 3.6x1.7 ASS	49
PF-RA 4.5x2.0 ASS	40	SR-FG-S 4-48	45	SR-RZ 3.6x1.8 ASS	49
PF-RA 4.5x2.2 ASS	40	SR-FG-S 4-Spacer	46	SR-RZ 3.6x1.9 ASS	49
PF-RA 4.5x2.4 ASS	40	SR-FG-S 8-2.5	45	SR-RZ 3.6x2.0 ASS	49
PF-RA 4.5x2.5 ASS	40	SR-FG-S 8-2.7	45	SR-RZ 3.6x2.5 ASS	49
PF-RA 4.5x2.9 ASS	40	SR-FG-S 8-3.6	45	SR-RZ 3.6x2.5 EASS	53
PF-RA 4.5x3.0 ASS	40	SR-FG-S 8-48	45	SR-RZ 3.6x2.7 ASS	49
PF-RA 4.5x3.3 ASS	40	SR-FG-S 8-Blank	45	SR-RZ 3.6x3.0 ASS	49
PF-RA 4.5x3.6 ASS	40				





SR-RZ 3.6x3.0 EASS	53	SR-8SFP	54	SR-UI 1.5xPlug	60
SR-RZ 3.6x3.6 ASS	49	SR-CDCK-3.5x2.0	54	SR-UI 2.4xCAP	60
SR-RZ 3.8x3.6 ASS	49	SR-CDCK-3.5x2.5	54	SR-UI 2.4xPlug	60
SR-RZ 3.9x1.4 ASS	50	SR-CDCK-5.0x1.9	54	SR-UI 2.5xPlug	60
SR-RZ 3.9x2.0 ASS	50	SR-CDCK-5.0x2.0	55	SR-UI 3.0xPlug	60
SR-RZ 3.9x2.4 ASS	50	SR-CDCK-5.0x2.5	55	SR-UI 3.6xCAP	60
SR-RZ 3.9x2.4 LASS	50	SR-CDIZ 3-1.9	55	SR-UI 3.6xPlug	60
SR-RZ 3.9x2.5 ASS	50	SR-CDIZ 3-2.0	55	SR-UI 4.5xCAP	60
SR-RZ 3.9x2.7 ASS	50	SR-CDIZ 3-2.2	55	SR-UI 4.5xPlug	61
SR-RZ 3.9x3.0 ASS	50	SR-CDIZ 3-2.3	55	SR-UI 5.6xCAP	60
SR-RZ 3.9x3.9 ASS	50	SR-CDIZ 3-2.5	55	SR-UI 6.0xPlug	61
SR-RZ 4.5x1.1 ASS	50	SR-CDIZ 3-Plug	55	SR-UI 6.7xCAP	60
SR-RZ 4.5x1.4 ASS	50	SR-CDIZ 4-1.4	56	SR-UI 6.7xPlug	61
SR-RZ 4.5x1.4x1.4 ASS	50	SR-CDIZ 4-1.6	56	SR-VRCK-2	61
SR-RZ 4.5x1.8 ASS	50	SR-CDIZ 4-1.7	56	SR-VRCK-3	61
SR-RZ 4.5x1.9 ASS	50	SR-CDIZ 4-1.8	56	<b>Split Inserts</b>	
SR-RZ 4.5x2.0 ASS	50	SR-CDIZ 4-1.9	56	SR-IZ 1.4x.375	62
SR-RZ 4.5x2.5 ASS	50	SR-CDIZ 4-2.0	56	SR-IZ 1.4x.7	62
SR-RZ 4.5x2.7 ASS	50	SR-CDIZ 4-2.1	56	SR-IZ 1.4x.8	62
SR-RZ 4.5x3.0 ASS	50	SR-CDIZ 4-2.2	56	SR-IZ 1.4x.9	62
SR-RZ 4.5x3.5X2.7 ASS	50	SR-CDIZ 4-2.3	56	SR-IZ 1.4x1.1	62
SR-RZ 4.5x3.6 ASS	50	SR-CDIZ 4-2.4	56	SR-IZ 1.4x1.2	62
SR-RZ 4.5x3.6 EASS	53	SR-CDIZ 4-2.5	56	SR-IZ 2.4x.9	62
SR-RZ 4.5x4.5 ASS	50	SR-CDIZ 4-2.7	56	SR-IZ 2.4x1.1	62
SR-RZ 4.8x4.5 ASS	50	SR-CDIZ 4-2.8	56	SR-IZ 2.4x1.4	62
SR-RZ 4.9x1.9x1.4 ASS	51	SR-CDIZ 4-2.9	56	SR-IZ 2.4x1.6	62
SR-RZ 5.0x2.0 ASS	51	SR-CDIZ 4-3.0	56	SR-IZ 2.4x1.7	62
SR-RZ 5.0x2.5 ASS	51	SR-CDIZ 4-Plug	56	SR-IZ 2.4x1.8	62
SR-RZ 5.0x2.7 ASS	51	SR-CDS N	56	SR-IZ 2.4x1.9	62
SR-RZ 5.0x3.0 ASS	51	SR-CDS W	56	SR-IZ 2.4x2.0	62
SR-RZ 5.0x3.6 ASS	51	SR-FB 5.9x4.5	57	SR-IZ 2.5x1.1	62
SR-RZ 5.0x4.4 ASS	51	SR-MKZ TCI Cuff -2.0	57	SR-IZ 2.5x1.4	62
SR-RZ 5.0x4.5 ASS	51	SR-MKZ TCI Cuff -2.5	57	SR-IZ 2.5x1.5	62
SR-RZ 5.6x3.6 ASS	51	SR-MKZ TCI Cuff -2.7	57	SR-IZ 2.5x1.7	62
SR-RZ 5.6x4.5 ASS	51	SR-MKZ TCI Cuff -3.0	57	SR-IZ 2.5x1.8	62
SR-RZ 5.6x4.5X3.6 ASS	51	SR-MKZ TCI Cuff -3.6	58	SR-IZ 2.5x1.9	62
SR-RZ 6.3x2.5 ASS	52	SR-MKZ TCI Cuff Sm-1.1	58	SR-IZ 2.5x2.0	62
SR-RZ 6.3x3.6 ASS	52	SR-MKZ TCI Cuff Sm-1.4	58	SR-IZ 2.5x2.2	62
SR-RZ 6.3x4.5 ASS	52	SR-RFA	58	SR-IZ 2.5x2.3	62
SR-RZ 6.3x5.0 ASS	52	SR-RFA Tube	58	SR-IZ 3.0x1.4	63
SR-RZ 6.7x2.5 ASS	52	SR-RFA Tube x Female	58	SR-IZ 3.0x2.5	63
SR-RZ 6.7x3.6 ASS	52	SR-RFA Tube x Male	58	SR-IZ 3.0x2.7	63
SR-RZ 6.7x4.5 ASS	52	SR-RFA Tube x Tube	58	SR-IZ 3.6x1.1	63
SR-RZ 6.7x4.5 EASS	53	SR-RKZ 5-SDP	59	SR-IZ 3.6x1.1x1.1	63
SR-RZ 6.7x5.0 ASS	52	SR-RKZ 6-SDP	59	SR-IZ 3.6x1.4	63
SR-RZ 6.7x6.7 ASS	52	SR-SCL	59	SR-IZ 3.6x1.5x1.5	63
SR-RZ 8x4 ASS	52	SR-SCL-15gal	59	SR-IZ 3.6x1.6	63
SR-RZ 8x6 ASS	52	SR-SCL-OPW 2100	59	SR-IZ 3.6x1.7	63
<b>Split Repair Kits</b>		SR-TK 5.6x4.5x3.6	59	SR-IZ 3.6x1.8	63
SR-10SFP	54	SR-TRK 14x4.5	60	SR-IZ 3.6x1.9	63
SR-4SFP	54	SR-TS SRK	60	SR-IZ 3.6x2.0	63
		SR-UI 1.4xPlug	60		





SR-IZ 3.6x2.0 Hex	63	IN-RA 12x10 ASS	66	<b>Back Cover</b>	95
SR-IZ 3.6x2.2	63	IN-RA 12x6 ASS	66		
SR-IZ 3.6x2.4	63	IN-RA 12x8 ASS	66		
SR-IZ 3.6x2.5	63	IN-RA 180x110 ASS	66		
SR-IZ 3.6x2.5 Hex	63	IN-RA 250x160 ASS	66		
SR-IZ 3.6x2.7	63	IN-RA 6x3 ASS	67		
SR-IZ 3.6x2.9	63	IN-RA 6x4 ASS	67		
SR-IZ 3.6x3.0	63	IN-RA 8x4 ASS	67		
SR-IZ 3.6x3.2	63	IN-RA 8x6 ASS	67		
SR-IZ 4.5x1.4	64	<b>Chemicals</b>			
SR-IZ 4.5x2.0	64	CH-DAS	68		
SR-IZ 4.5x2.2	64	CH-DAS-II 50ML	68		
SR-IZ 4.5x2.4	64	CH-DAS-II 50ML-FS	68		
SR-IZ 4.5x2.5	64	CH-DAS-II 600ML	68		
SR-IZ 4.5x2.7	64	CH-DBB V	68		
SR-IZ 4.5x2.9	64	CH-DBC II	68		
SR-IZ 4.5x3.0	64	CH-DBF III	69		
SR-IZ 4.5x3.6	64	CH-DEB-50 ml	69		
SR-IZ 4.5x3.8	64	CH-DEB-Bulk 15#	69		
SR-IZ 4.5x3.9	64	CH-DEB-Bulk 5#	69		
SR-IZ 4.5x4.0	64	CH-DEB-Bulk13	69		
SR-IZ 4.8x3.6	64	CH-DEIK-13oz	69		
SR-IZ 4.8x3.8	64	CH-DFB-50ml	69		
SR-IZ 4.8x4.5	64	CH-DGK-4	70		
SR-IZ 5.0x3.6	64	CH-DRP 1-1/2	70		
SR-IZ 5.0x3.9	64	CH-DRP 32oz	70		
SR-IZ 5.0x4.5	64	CH-DRPSL 1-1/2	70		
SR-IZ 6.0x3.0	65	CH-DSG	70		
SR-IZ 6.0x3.6	65	CH-DSP-4oz	70		
SR-IZ 6.0x3.9	65	<b>Accessories</b>			
SR-IZ 6.0x4.5	65	PF-ABV-1	71		
SR-IZ 6.7x2.0	65	PF-ACDI 3x2.0	71		
SR-IZ 6.7x3.6	65	PF-ACDI 4x2.0	71		
SR-IZ 6.7x4.0	65	PF-ACDI 4x2.5	71		
SR-IZ 6.7x4.5	65	PF-AV-1	71		
SR-IZ 6.7x5.0	65	PF-AV-2	71		
SR-IZ 6.7x5.2	65	PF-AV-4	71		
SR-IZ 6.7x6.0	65	PF-CDS-N	71		
<b>Industrial</b>		PF-CDS-W	71		
IN-14S-8.7	66	PF-CHG	71		
IN-B11-6C	66	<b>Tools / Supplies</b>			
IN-B11-8C	66	CH-DAG	72		
IN-B11-8F	66	CH-DAG III	72		
IN-B13-10C	66	CH-DAG III-M	72		
IN-B13-10F	66	CH-DSM-I	72		
IN-B15-12C	66	CH-DSM-III	73		
IN-B15-12F	66	CH-DSM-IV	73		
IN-B17-14C	66	CH-DSM-V	73		
IN-B17-14F	66	SU-MLA-Tool	74		
IN-RA 10x6 ASS	66	SU-TSA Tool	73		
IN-RA 10x8 ASS	66				

PRODUCT



*"Better by Design"*

Diversified Products Manufacturing, Inc.

5523 Baggett Marysville Rd. Oroville, CA 95965  
Sales@dpm-llc.com \* Office 530-534-3966

CATALOG