

PG-S II 10 OPW

Installation Instructions

Polyglass Split Repair for OPW 10 Stud Penetrations



Diversified Products
Manufacturing Inc.



Weaver Products

Prepare all Surfaces: All surfaces to be bonded should be prepared prior to Completing the installation steps below.

Warning: Failure to follow each step will void the warranty and may result in premature failure of the penetration fitting. Adhere to the following general instructions for each step of the installation.

Bonding to Poly & FRP surfaces: Clean and sand (rough up) sump surfaces with CH-DBC II. Remove all gel coat on all fiberglass surfaces. Apply CH-DEB to all surfaces to be bonded both the fitting and sump wall.

Cleaning: Spray all surfaces to be bonded with CH-DBC II Cleaner and allow to air dry. Excess cleaner may be wiped off with a clean dry cloth.

PG-S II Polyglass Repair Kits are used to Repair Studded Penetration Fittings.

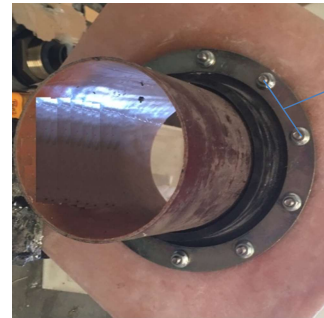
Note: The OPW Pisces Penetration has a unique stud pattern that does not match others in the industry. The boots shown in this instruction are sealed to the sump's exterior wall. Some manufactureres have a boot that is sealed to the interior wall under the metal retaining plate.

Step 1

Remove Boot:

Remove the nuts and discard. slide the metal ring back over the pipe. Cut off or remove the existing boot.

***This will leave a Hole in the sump exposed to the back fill.**

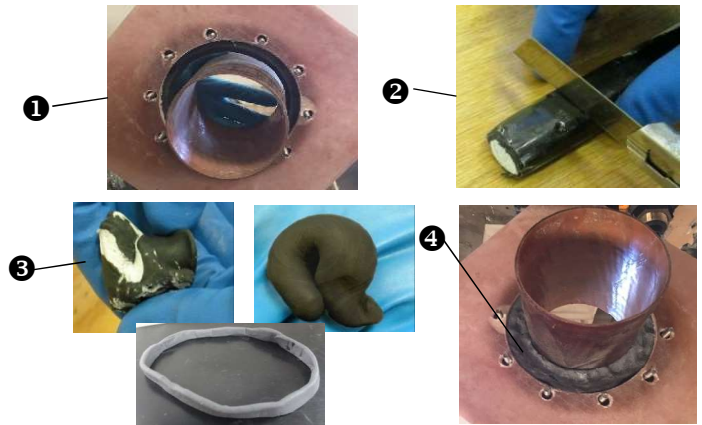


Distance between Studs
Center to Center 1.8"

Step 2

Seal the openings between the pipe and the sump wall with CH-DSP-4:

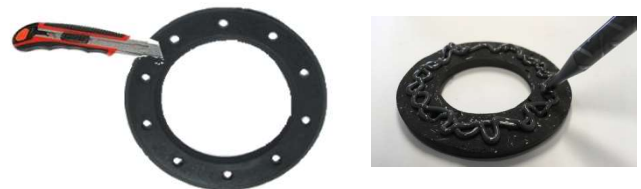
- 1 Sand all bonding surfaces. Remove all debris and gelcoat.
- 2 Cut off the amount of CH-DSP-4 to be used.
- 3 Roll and knead putty between hands until a consistent grey color is achieved-approximately two minutes. Form a thin membrane
- 4 Apply a sufficient amount between the pipe & sump wall. Do not overfill the bond area. Less is better-just enough to create a seal between the pipe and wall.



Step 3

Clean Polyglass Ring with CH-DBC II and apply Epoxy:

Spray with CH-DBC II. Wipe or air dry. (fitting and sump) Cut the Polyglass Ring approximately equally between the Stud Holes. Apply Epoxy CH-DEB to Bonding surfaces and spread evenly.



Step 4

Install PG-S II Bonding Ring over Existing studs:

Wrap split Polyglass Ring around the pipe and slide over existing studs.



Step 5

Re-install Metal Plate:

Replace Metal Ring (Removed earlier) over studs and install new ¼-20 Flange nuts, supplied in kit. Snug plate to the polyglass ring using the flange nuts.



Step 6

Prepare Bulk Epoxy CH-DEB-Bulk13 and Install:

Open both cans and add the contents of the smaller can of hardener (Part B) to the large can of resin (Part A) and stir with the wooden stir stick provided. Also available in larger bulk 5# or 15# pails. Contact Factory.

When properly blended, the CH-DEB epoxy is ready to cure. When using on vertical surfaces allow a few minutes to "set up" sufficiently to keep Epoxy from running. Use a spatula or other item to apply the DEB epoxy.

WARNING: MIX CAREFULLY TO ENSURE THE EPOXY IS WELL CATALYZED.



Step 7

Fill gap with CH-DEB Epoxy:

Fill the gap between the PG-S II Series bonding ring, and the pipe with the CH-DEB epoxy.

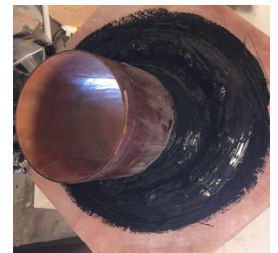


Step 8

Paint with CH-DBF II :

Paint ½" beyond the repair on both the sump wall and the pipe to complete installation.

Hydrostatic test may be performed 1 Hour after Painting.



Tools Required

- Sanding Tool (for sump walls)
- CH-DAG III Applicator Gun
- CH-DSM III Static Mixers (additional)
- Box Knife for Cutting Polyglass Ring

Epoxy Requirments

Pipe Size	ML	OZ
3" Flex Pipe	70	2.4
3" FRP	97	3.3
4" Flex Pipe	44	1.5
4" LCX	40	1.35
4" Corr duct	44	1.5

ML = milleters for 50 ml cartridges
OZ = Ounces for Bulk applications

Products Needed

- PG-S II 10 OPW Kit:
 - 1- PG-S II 10 OPW Repair Kit
- DEIK-13 Installation Kit:
 - 1-50ml CH-DBF II Polysulfide Paint
 - 1-50ml CH-DEB Epoxy
 - 1-13oz CH-DEB-BULK Epoxy
 - 1-Each Spatula,Brush, Gloves, Stir stick, installation instructions
- 1-CH-DSP-Stick Super Putty
- 1-CH-DBC II - Aerosol Cleaner