



## "Better By Design"

### Polyglass Studded Repair Fittings

#### TECHNICAL DATA SHEET

Polyglass Studded repair fittings can be used on Fiberglass or Poly Sumps and on Round or flat surfaces.

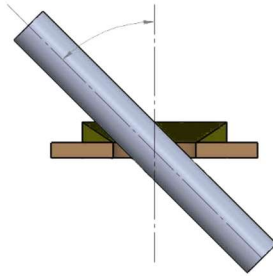


Alcryn With 25% Glass Fiber Fill

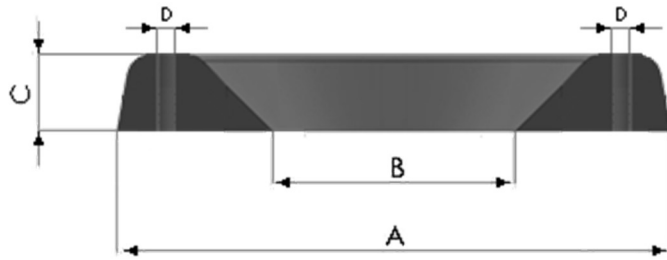


Installed Fitting

#### ANGULAR DEFLECTION DATA



#### DIMENSIONAL DATA



#### Maximum Off-Axis Entry Angle for DPM Fiberglass Fittings and Common Pipes

Fitting	Pipe	Maximum Angle Off-Axis (degrees)
PG-S II 4 SM	3/4"	50
PG-S II 4 M	3/4"-1"	45
PG-S II 4	3/4"-1"	30
PG-S II 4 OPW	3/4"-1"	30
PG-S II 8	3" FRP	58
PG-S II 8 OPW	2" FRP	53
PG-S II 10	4" FRP	53
PG-S II 10 OPW	4" CDS	45

\* Consult Factory for Additional Pipe Sizes

\*Note Pipe angle is with pipe fitted tight to PGS Fitting without DEB Epoxy Bonder

Part Number	A	B	C	Stud Size (D)
PG-S II 4 SM	3.00"	1.57"	.250"	3/16"
PG-S II 4 M	3.20"	1.81"	.250"	3/16"
PG-S II 4	4.50"	2.375"	.500"	3/4"
PG-S II 4 OPW	4.375"	12.25"	.500"	3/4"
PG-S II 8	6.375"	3.875"	.500"	3/4"
PG-S II 8 OPW	5.375"	3.75"	.500"	3/4"
PG-S II 10	8.00"	5.50"	.500"	3/4"
PG-S II 10 OPW	6.375"	5.00"	.500"	3/4"

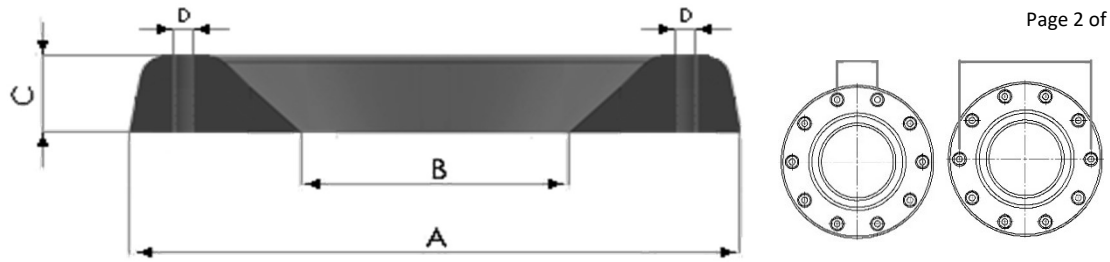
#### THIRD PARTY APPROVALS



#### Products Used on this Project

Yes	No	Product	Part Number
<input type="checkbox"/>	<input type="checkbox"/>	Sub-Miniature Polyglass Fitting	PG-S II 4 SM
<input type="checkbox"/>	<input type="checkbox"/>	Miniature Polyglass Fitting	PG-S II 4 M
<input type="checkbox"/>	<input type="checkbox"/>	4" Polyglass Fitting	PG-S II 4
<input type="checkbox"/>	<input type="checkbox"/>	4" Polyglass Fitting-OPW	PG-S II 4 OPW
<input type="checkbox"/>	<input type="checkbox"/>	8" Polyglass Fitting	PG-S II 8
<input type="checkbox"/>	<input type="checkbox"/>	8" Polyglass Fitting-OPW	PG-S II 8 OPW
<input type="checkbox"/>	<input type="checkbox"/>	10" Polyglass Fitting	PG-S II 10
<input type="checkbox"/>	<input type="checkbox"/>	10" Polyglass Fitting-OPW	PG-S II 10 OPW





Part Number	Pipe (Nominal)	CH-DEB Bulk (oz)	CH-DEB 50ml (ml)	Ring OD" (A)	Ring ID" (B)	Ring Height (C)	Stud-Stud	Stud-Stud
PG-S II 4 SM								
	¾"	.65	12	3.0	1.57	.250	1.625	2.25
	1"	.54	16	3.0	1.57	.250	1.625	2.25
PG-S II 4 M								
	¾"	.74	22	3.20	1.81	.250	1.75	2.50
	1"	.64	19	3.20	1.81	.250	1.75	2.50
PG-S II 4								
	¾"	.58	17.4	4.25	2.00	.500	2.25	3.25
	1"	.65	16.9	4.25	2.00	.500	2.25	3.25
PG-S II 4 OPW								
	¾"	.94	28.1	4.375	2.25	.500	2.50	3.50
	1"	.89	26.6	4.375	2.25	.500	2.50	3.50
PG-S II 8								
	1 ½" OPW	2.8	83	6.375	3.875	.500	2.00	5.125
	2" OPW	2.29	68	6.375	3.875	.500	2.00	5.125
	2" FRP	2.94	87	6.375	3.875	.500	2.00	5.125
	2" LCX	2.77	82	6.375	3.875	.500	2.00	5.125
	3" FRP	1.62	48	6.375	3.875	.500	2.00	5.125
	3" LCX	1.28	38	6.375	3.875	.500	2.00	5.125
PGS-S II 8 OPW								
	1 ½" OPW	2.10	62.2	5.375	3.75	.500	1.75	4.50
	2" OPW	1.82	54	5.375	3.75	.500	1.75	4.50
	2" FRP	2.13	63	5.375	3.75	.500	1.75	4.50
PG-S II 10								
	2" LCX	3.55	105.6	8.00	5.50	.500	2.125	6.875
	3" FRP	3.27	97	8.00	5.50	.500	2.125	6.875
	3" LCX	2.07	61.3	8.00	5.50	.500	2.125	6.875
	4" CDS	1.47	43.57	8.00	5.50	.500	2.125	6.875
	4" FRP	1.47	43.57	8.00	5.50	.500	2.125	6.875
PG-S II 10 OPW								
	3" LCX	4.86	144	6.375	.500	.500	1.75	5.75
	4" LCX	4.05	120	6.375	.500	.500	1.75	5.75
	4 ½" CDS	4.29	127	6.375	.500	.500	1.75	5.75
	4.8" CDS	5.57	165	6.375	.500	.500	1.75	5.75
	4" FRP	4.29	127	6.375	.500	.500	1.75	5.75

\*CH-DEB 50ml: Is Bonder for Ring to Sump

\*CH-DEB Bulk: Bonder for Ring to Pipe