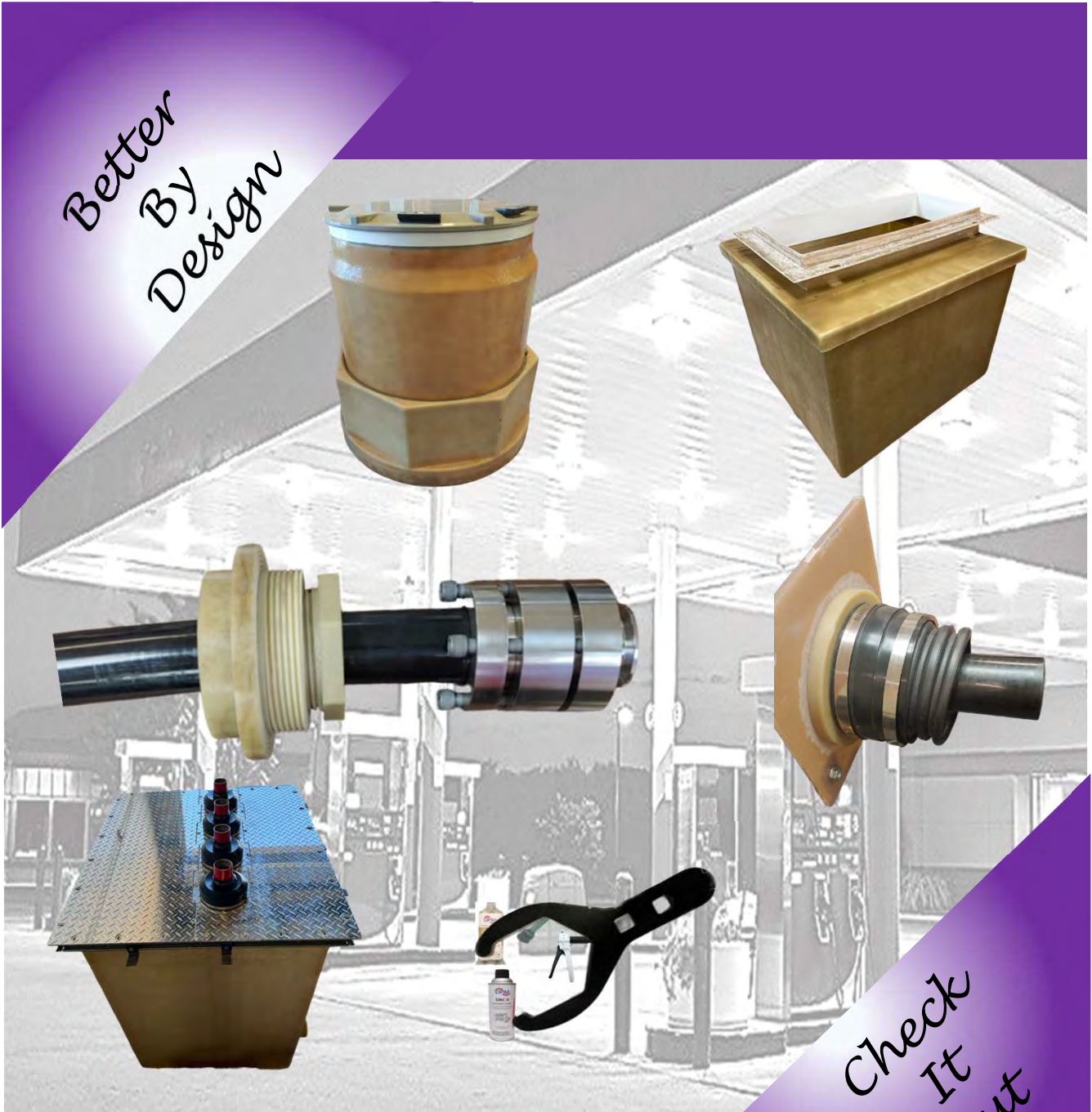


OmegaFlex Complimentary Products

*Better
By
Design*



*Check
It
Out*

November 2023



"Better by Design"

Diversified Products Manufacturing, Inc.

OmegaFlex Complimentary Products Catalog

Table of Contents

Price List

OmegaFlex Series of Penetrations
OmegaFlex Sumps 40x36x30
OmegaFlex Sanding Hole Saws

Page 1
Page 2
Page 3

Data Sheets

OmegaFlex Penetrations
OmegaFlex Sumps
OmegaFlex Sanding Hole Saws

Page 4
Page 5 & 6
Page 7 & 8

Submittal Drawings

Page 9

Installation Instructions

OmegaFlex Penetrations

Page 10 & 11

Third Party Approvals

Roundtable
ND Eryou

Page 12
Page 13 -15



Diversified Products Manufacturing, Inc. 5523 Baggett Marysville Road, Oroville, CA 95965

E-Mail: Sales@DPM-llc.com Web: dpm-co.com

Phone: 530-534-3966 Fax 530-534-7404

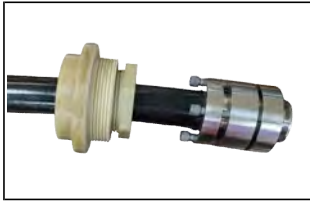




"Better by Design"

OmegaFlex FGC Series Penetrations

Fiberglass Penetrations for Omegaflex DoubleTrac Pipe - Single Wall or Double Wall Sump applications for **Direct Burial Applications**



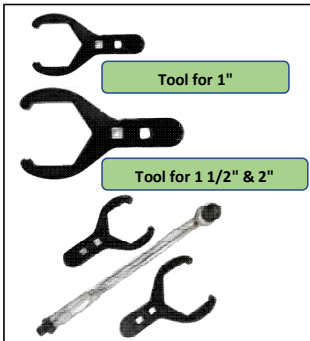
Part #	Description	List Price
PF-FGC-5.0x1.55-DB	Compact Fiberglass Penetration for Omegaflex UGF-FSP-16 1" Pipe	\$270.00
PF-FGC-5.0x2.38-DB	Compact Fiberglass Penetration for Omegaflex UGF-FSP-24 1 1/2" Pipe	
PF-FGC-5.0x2.93-DB	Compact Fiberglass Penetration for Omegaflex UGF-FSP-32 2" Pipe	

Fiberglass Penetrations for Omegaflex DoubleTrac Pipe - Single Wall or Double Wall Sump applications For **Corrugated Ducted Applications**



Part #	Description	List Price
PF-FGC-5.0x1.55-CD	Compact Fiberglass Penetration for Omegaflex UGF-FSP-16 1" Pipe	\$324.00
PF-FGC-5.0x2.38-CD	Compact Fiberglass Penetration for Omegaflex UGF-FSP-24 1 1/2" Pipe	
PF-FGC-5.0x2.93-CD	Compact Fiberglass Penetration for Omegaflex UGF-FSP-32 2" Pipe	

Tools for Tightening Omegaflex Compact Fittings



Part #	Description	List Price
PF-FGC-S-Tool	Spanner Tool for Small Nut - 1.18" OD through 1.55" OD Pipe	\$122.50
PF-FGC-M-Tool	Spanner Tool for Medium Nut - 1.70" OD through 3.93" OD Pipe	\$122.50
PF-FGC-Tool Kit	Two Spanner Tools with Torque Wrench	\$350.00



Part #	Description	List Price
CH-DFB-50ml	50ml Cart Set Fiberglass Bonder for Fiberglass Penetrations includes one CH-DSM-V Static Mixer. Use with CH-DAG-III Enough Epoxy for 4 PF-FGC Fittings	\$104.12
CH-DSM-V	Static Mixer for use with CH-DFB-50ml This is a fast curing Product. Additional Static Mixers may be required.	\$15.76
CH-DAG III	Plastic Applicator Gun for use with 50ml Cartridge Sets	\$142.49
CH-DAG III M	Metal Applicator Gun for use with 50ml Cartridge Sets	\$192.50
CH-DBC II	Diversified Bulkhead Cleaner for use prior to bonding	\$20.36

**\$50 Hazmat
fee on air
shipments**

**No Shipping
Restrictions**



Diversified Products Manufacturing
5523 Baggett Marysville Road Oroville CA 95965
530-534-3966 - www.dpm-co.com - Order Entry Email: sales@dpm-llc.com





"Better by Design"

Wide UDC's for Omegaflex

Standard 40x36x30 Sumps for Under Dispenser Containment



Part #	Description	List Price
ES-4036	Jumbo 40x36x30 UDC, Bottom, Frame & Rails	\$3,299.00

Note: These sumps are available with split lids for various transition sump applications. Contact the Contact the factory for specific applications including prefabricated sumps.

Also available with stainless steel Frame on request.

Stabilizer Bar Assemblies



Part #	Description	List Price
SU-SBA-36-PC	Stabilizer Bar Assembly for 36" Wide Sumps Powder Coated	\$142.50
SU-SBA-36-SS	Stabilizer Bar Assembly for 36" Wide Sumps Stainless Steel	\$227.82



Diversified Products Manufacturing
 5523 Baggett Marysville Road Oroville CA 95965
 530-534-3966 - www.dpm-co.com - Order Entry Email: sales@dpm-llc.com





"Better by Design"

Sanding Hole Saws- Carbide Tipped

Sanding Hole Saws - Carbide Tipped for Fiberglass



Part #	Description	List Price
PF-SHS-1.75x2.8	Sanding Hole Saw for 3/4 & 1" Bonded Electrical Conduits SW Sumps	\$232.28
PF-SHS-2x2.8	Sanding Hole Saw for 3/4 & 1" Bonded Electrical Conduits DW Sumps	\$256.61
PF-SHS-2x3	Sanding Hole Saw for B2 Series Penetrations SW Sumps	\$261.13
PF-SHS-3.5x5.2	Sanding Hole Saw for B3.5 Series Penetrations SW Sumps	\$407.56
PF-SHS-5x6.7	Sanding Hole Saw for B5 Series Penetrations SW Sumps	\$565.85
PF-SHS-6x7.6	Sanding Hole Saw for B6 Series Penetrations SW Sumps	\$587.08
PF-SHS-2.25x4.5	Sanding Hole Saw for 4 Stud Penetrations SW Sumps	\$291.71
PF-SHS-4x6.7	Sanding Hole Saw for 8 Stud Penetrations SW Sumps	\$466.05
PF-SHS-5.5x8	Sanding Hole Saw for 10 Stud Penetrations SW Sumps	\$509.88
PF-SHS-4.5x6.38	Sanding Hole Saw for FGT & FGC Series Fiberglass Penetrations SW Sumps	\$467.33
PF-SHS-5x6.85	Sanding Hole Saw for Omegaflex Series Penetrations SW Sumps	\$566.57
PF-SHS-5x6.38	Sanding Hole Saw for FGT & FGC Series Fiberglass Penetrations DW Sumps	\$566.57
PF-FGC-5.5x6.85	Compact Fiberglass Penetration for Omegaflex Penetrations DW Sumps	\$495.37



Diversified Products Manufacturing
 5523 Baggett Marysville Road Oroville CA 95965
 530-534-3966 - www.dpm-co.com - Order Entry Email: sales@dpm-llc.com





"Better By Design"

OmegaFlex Compact Penetration Fittings

Technical Data Sheet

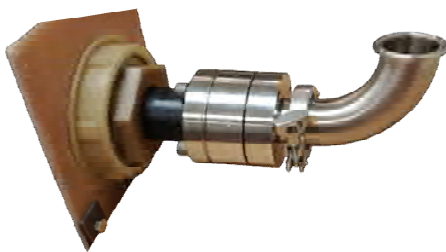
With the introduction of the new Compact Penetration Fitting for OmegaFlex pipe, significant labor can be saved by installing the End Fitting prior to installation inside the sump. This advancement along with a wider UDC compatible with all dispensers makes installation for OmegaFlex Systems considerably easier and saves significant time.



Assemble outside sump

All components are either UL Listed or third party approved for their respective applications.

Fiberglass penetration fittings have no rubber in the sump. All components are injection molded fiberglass with a fuel rated compression seal. Seal may be replaced if needed.

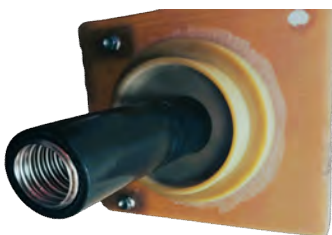


Connect DoubleTrac End Fitting to mating component

Penetrations are epoxy bonded to sump walls and compression sealed to DoubleTrac pipe without affecting the pipe's interstice.

Penetration fittings tested for sump pressures in excess of 60 PSIG which is equivalent to 138 ft depth of burial.

Fittings are available for 1" UGF FSP-16 Pipe, 1 1/2" UGF FSP-24 pipe and 2" UFG FSP-32 Pipe



Bond to sump wall

No Questions Asked 3 year warranty if leaks are found around the DoubleTrac Pipe due to factory defect.

Manufactured for direct burial, with a push in connection for corrugated ducting or with optional boot for water tight seal to corrugated ducting.

Note: Follow OmegaFlex Guidelines for the type of DoubleTrac End Fitting to be used.

Third Party Approvals



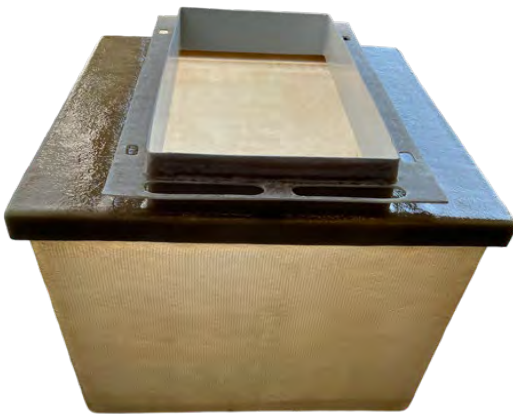


"Better By Design"

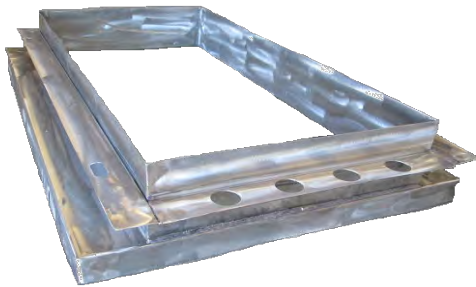
40"x36"x30" UDC's and OmegaFlex Compact Penetration Fittings

Technical Data Sheet

With the introduction of the new Compact Penetration Fitting for OmegaFlex pipe, significant labor can be saved by installing the end Fitting prior to installation inside the sump. This advancement along with a wider UDC compatible with all dispensers makes installation for OmegaFlex Systems considerably easier and saves significant time.



Basic 40x36 Sump w/Fiberglass Frame



Stainless Steel Frame

All components are either UL Listed or third party approved for their respective applications.

Fiberglass sumps and frames match the dispenser specified. These sumps are specifically designed to match the unique dispenser provided. For frame sizes refer to the Frame Selection Chart on the back of this Data Sheet

These sumps are designed to be used with OmegaFlex DoubleTrac pipe systems.

The sump can support up to 4 Lines plus an alarm sensor

Basic sump dimensions are 40x36x30 with 30" being the depth at the shallow end.

Sumps are sloped to the 32" end to a drain cup that allows for quick recognition of fluids in the sump.

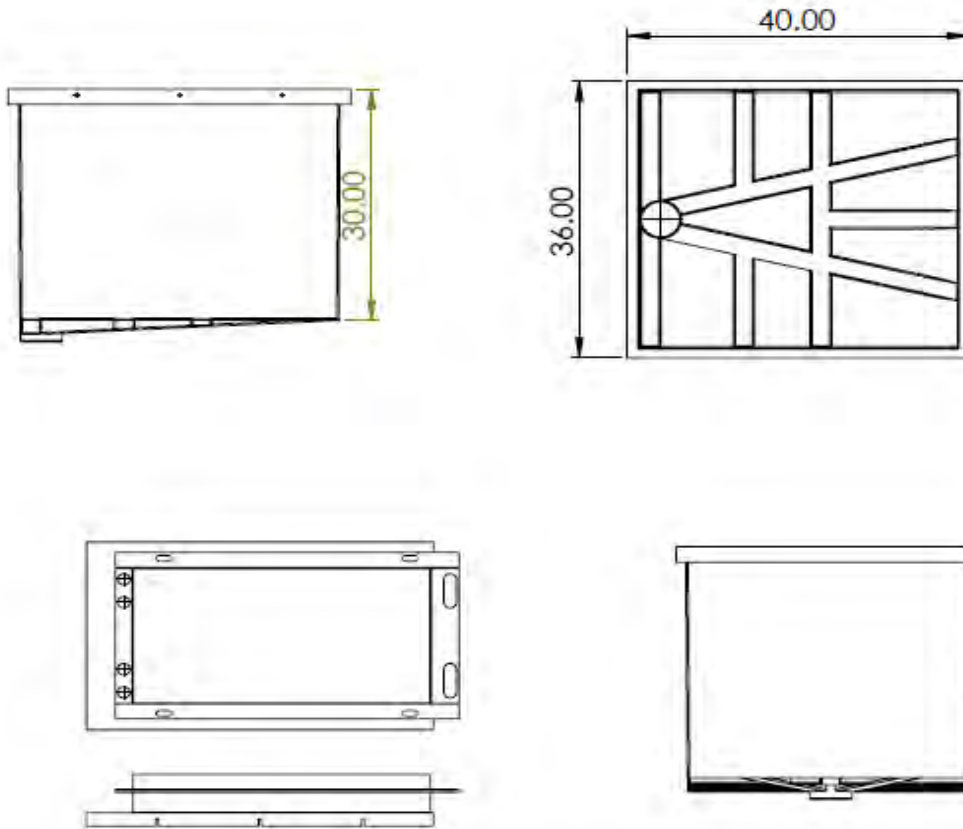
Sumps are available in double wall configurations and in a 48" deep version. Sumps can be configured to be transition sumps, vapor or vent sumps incorporating a unique rain resistant split lid.

Optional Equipment: Stainless Steel Frame, Alarm brackets, Alarm Sensors installed in either single or double wall sump applications. Options for transition sumps include: Racks and Vapor Pots.

Complete engineered systems are available factory fabricated and customized to the needs of the project.

Third Party Approvals





MFG	DISPENSER	FOOTPRINT	FRAME
Gilbarco	Encore	40 9/16" x 23 3/4"	-3617 G
Wayne	Ovation	43.46" x 19.42"	-4015 W
Bennett	Pacific	44 3/8" x 19 1/4"	-4015 B

Frame Selection Chart

"Better By Design"

Sanding Hole Saws

Technical Data Sheet

Proper Hole saw selection for penetration fittings is key to having a tight sump. After the hole is cut, the sump should be sanded to remove all gel coat and to smooth rough fiberglass surfaces on the surfaces to be bonded. This can now be accomplished in one step with Diversified's Sanding Hole Saws. Sanding hole saws are manufactured to match the penetration fitting's diameter and provided a smooth relief for the diameter of the bonding surface. An additional slight relief is designed for excess epoxy to easily compress to the outside of the fitting.

Sanding hole saws are available for all penetrations made up to 6 1/2" Diameter.

Sanding hole saws are industrial grade carbide tipped

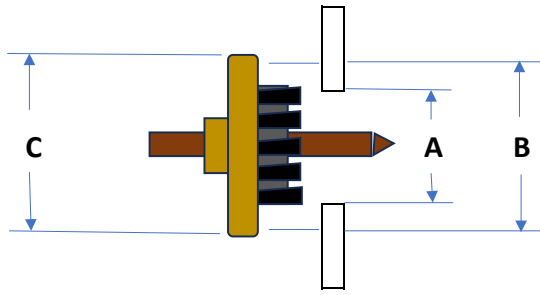
The hole saw is backed with an aluminum disc with an abrasive surface.

Abrasive surfaces are replaceable in the field by bonding on commercial sand paper of the grit desired.

Reduces labor by doing two operations at the same time.

Assures a smooth, even bonding surface for penetration fittings.

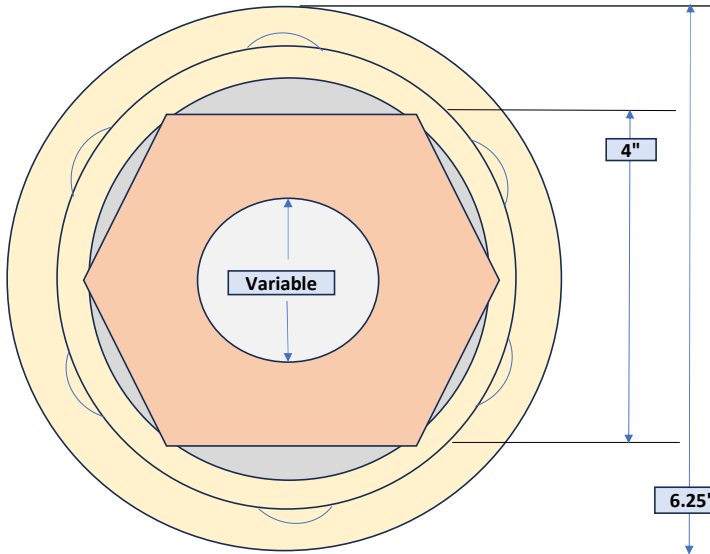




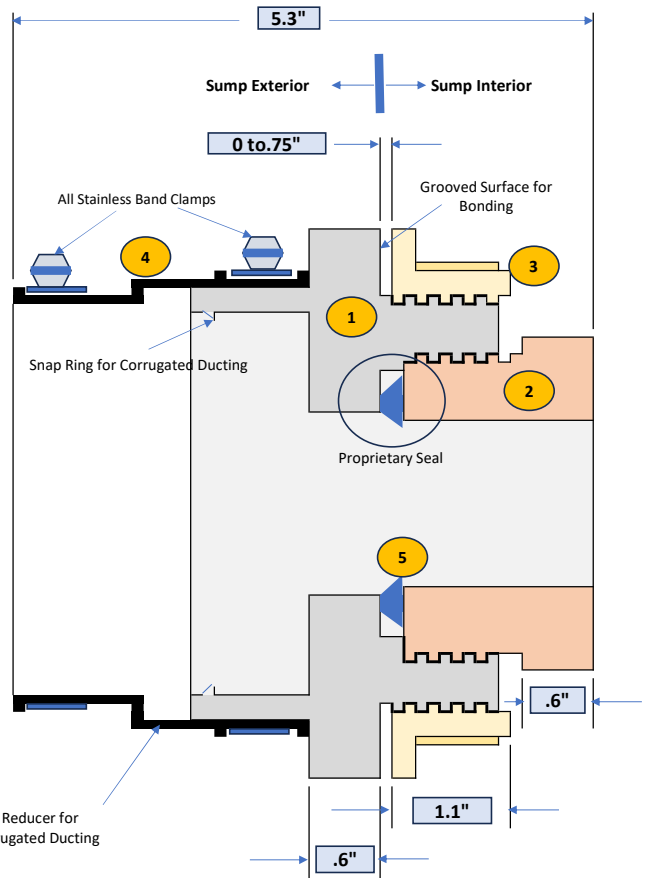
A Hole Saw	B Bonding Diameter	C SHS Diameter	Product Number	Application	Sump
1 3/4	2.61"	2.68"	PF-SHS-1.75x2.8	Bonded Electrical Conduit 3/4"	Single Wall
1 3/4	2.61"	2.68"	PF-SHS-1.75x2.8	Bonded Electrical Conduit 1"	Single Wall
2	2.97	3	PF-SHS-2x3	B2 Threaded Traditional Design	Single Wall
3.5	5.04	5.2	PF-SHS-3.5x5.2	B3.5 Threaded Traditional Design	Single Wall
5	6.54	6.7	PF-SHS-5x6.7-	B5 Threaded Traditional Design	Single Wall
6	7.43	7.6	PF-SHS-6x7.6	B6 Threaded Traditional Design	Single Wall
2 1/4	4.34	4.5	PF-SHS-2.25x4.5	4 Stud Traditional Design	Single Wall
4"	6.34	6.5	PF-SHS-4x6.7	8 Stud Traditional Design	Single Wall
5 1/2	7.96	8	PF-SHS-5.5x8	10 Stud Traditional Design	Single Wall
4 1/2	6.25	6.38	PF-SHS-4.5x6.38	FGC & FGT Fiberglass Fittings	Single Wall
5	6.55	6.85	PF-SHS-5x6.85	Omegaflex Fiberglass Compact Fittings	Single Wall
2	2.61"	2.68"	PF-SHS-2x2.8	2" Interstice seal for Bonded Electrical Conduit 3/4"	Double Wall
2	2.61"	2.68"	PF-SHS-2x2.8	2" Interstice seal for Bonded Electrical Conduit 1"	Double Wall
				Contact Factory for Applications	Double Wall
					Double Wall
					Double Wall
					Double Wall
					Double Wall
					Double Wall
					Double Wall
					Double Wall
					Double Wall
5	6.25	6.38	PF-SHS-5x6.38	Interstice Seal for FGC & FGT Fiberglass Fittings	Double Wall
5 1/2	6.55	6.85	PF-SHS-5.5x6.85	Interstice Seal for Omegaflex Fiberglass Compact Ftg	Double Wall

Rev	Date	Approved
A	11.12.2023	JWR
B	11.20.2023	JWR

Item	Description	Qty	Material
1	Body	1	Injection Molded Fiberglass
2	Compression Nut	1	Injection Molded Fiberglass
3	Nut	1	Injection Molded Fiberglass
4	Terminating Reducer	1	Thermoplastic
5	Proprietary Seal	1	Thermoplastic



PF-FGC-M-Tool










Pipe	Variable	Hole Saw	Min Spacing -Centers	Fitting Part Number
UGF-FSP-16	1.59"	5"	7.25	PF-FGC-5.0x1.55-CD
UGF-FSP-24	2.33"	5"	7.25	PF-FGC-5.0x2.38-CD
UGF-FSP-32	2.94"	5"	7.25	PF-FGC-5.0x2.93-CD

Submittal Drawing
Revision - B
Date: 11.20.2023
Scale: Not to Scale



Diversified Products Manufacturing
 5523 Baggett Marysville Road Oroville, CA 95965
 530-534-3966 - www.dpm-co.com - Order Entry Email: sales@dpm-llc.com



<h1>PF-CII-FGC-OF</h1>		<h2>Contractor Installation Instructions</h2>	
		<h3>OmegaFlex Compact Penetration Fittings</h3>	
 <p>Diversified Products Manufacturing Inc.</p>	 <p>Weaver Products</p>	<p>Prepare all Surfaces: All surfaces to be bonded should be prepared prior to completing the installation steps below.</p> <p>Warning: Failure to follow each step will void the warranty and may result in premature failure of the penetration fitting. Adhere to the following general instructions for each step of the installation.</p> <p>Cleaning: Spray all surfaces to be bonded with CH-DBC II Cleaner and wipe dry. Excess cleaner may be wiped off with a clean dry cloth.</p> <p>Bonding to Steel and FRP surfaces: Clean and sand (rough up) sump surfaces. Remove all gel coat on all fiberglass surfaces. Apply CH-DFB to all surfaces to be bonded both the fitting and sump wall.</p>	
<p>Compact Fiberglass Penetrations for OmegaFlex pipe are unique to the industry. These penetration fittings allow the End Fitting of the pipe to be mounted outside the sump with the penetration then installed. The contractor no longer has to assemble the End Fitting of from the inside of the sump. This fitting design will accommodate the Omegaflex UGF-FSP-16, UGF-FSP-24 & UGF-FSP- 32 products.</p>			
<p>Step 1</p> <p>Hole Preparation: Drill a 5" Diameter hole where the fitting is to be installed. Sand around the hole 1.5" on the outside of the sump. (The nut is on the sump interior and is not bonded). Diversified offers a carbide holesaw with sanding disc so that the hole and sanding can be performed in one operation. When this tool is used the sanded area is just large enough for the fitting and epoxy.</p>		<p>Hole Saw 5"</p> <p>Minimum Spacing between Centers 7.5"</p>	
<p>Step 2</p> <p>Prepare the corrugated duct if used: Measure the pipe for length and cut. If corrugated ducting is used, slide the terminating boot over the corrugated ducting, and install the corrugated duct seal in the third Groove of the corrugated ducting.</p>			
<p>Step 3</p> <p>Assemble outside the sump: Slide the body of the penetration fitting over the pipe, then the compression seal and finally the compression nut. Note the orientation of the seal.</p>			
<p>Step 4</p> <p>Install the DoubleTrac End Fitting: The DoubleTrac end fitting is then assembled on the pipe. Note the outside diameter of the End Fitting for 2" OmegaFlex pipe is 4.63" and the hole is 5". The plug for the interstice air test valve should be removed just prior to installation. Follow instructions provided by OmegaFlex for applications and assembling the head.</p>			
<p>Step 5</p> <p>Dry Fit: With the penetration and DoubleTrac End Fitting in place, dry fit the assembly into the sump. Relocate the Body, Nut, Compression Seal and Compression Nut of the assembly to match the sump. Make sure to seat the compression seal. The compression nut may be used to drive the seal in place once it is seated in its pocket.</p>			

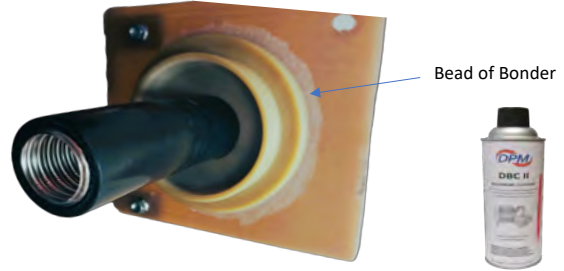
Step 6

Connect the pipe to the mating components: Slide the penetrations' nut over the head prior to the final installation of the assembly. At this point the DoubleTrac End Fitting should be connect to the mating component. Install the seal and compression nut. This verifies that the fitting is in the correct location.



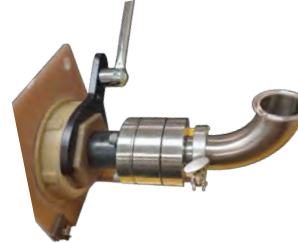
Step 7

Bond to sump Wall: Clean the surfaces to be bonded with CH-DBC II and let air dry or dry with a clean dry cloth. Apply CH-DFB bonder to the sump surface and the fitting surface. Slide the assembly in place, install the nut that holds the penetration in place and tighten. Be sure there is enough bonder on the fitting to force a small bead to the outside of the fitting. This bead of bonder must extend entirely around the fitting. If not, remove and reapply bonder and install until the bead of bonder is present. It should take less than 50 ml of bonder to properly bond the fitting to the sump wall.



Step 8

Seat the seal and compression nut: Push the seal into the penetration fitting and thread in the compression nut. Tighten with the Spanner tool and torque wrench. Torque the nut until 25 ft lb is attained on the torque wrench. **Note: the tool supplied multiplies the torque of the wrench.**



Step 9

If Corrugated Ducting is used: Install the corrugated duct seal in the third groove of the corrugated ducting. Snap the corrugated ducting into the end of the penetration fitting. The corrugated duct seal should be visible. Slide the terminating reducer over the penetration fitting and tighten clamps. The corrugated duct seal should be directly under the outbound band clamp. **Do not exceed 60 ft lb when tightening the band clamps.**



Tools Required

- 5" Sanding hole saw
- Spanner tool with torque wrench

Products Needed

- CH-DFB-50ml Fiberglass epoxy.
- CH-DBC II Cleaner



October 30, 2020

Mr. Josh Dow
Diversified Products Manufacturing Inc
5523 Baggett Marysville Rd
Oroville, CA 95965

RE: NDE Reference No: NDE20201020
Third-Party Certification under UL 2447- Outline of Investigation for
Fittings Accessories for Fuels

Products Evaluated: Split Repair Fittings & Test Reducers for Containment Sumps for
Fuels PF-Penetration Fittings Series, Sump Entry Fittings and Test
Reducers
SR- Split Repair Sump Entry Fittings and Test Reducer Series
FG/PG Spilt Repair Series
CH- Series, All Chemicals used in the installation process
SU- Sumps and Accessories

Dear Mr. Dow,

In reference to the above listed products, our testing partner on this project (N.D. Eryou, PhD, PE) has performed our UL 2447 Third-Party inspection and testing. All products listed were determined to comply with the "Outline of Investigation for Fittings and Accessories for Fuels".

It is our opinion that both the design and materials used in the above products are based on sound engineering principles and the materials are compatible with all motor fuels and additives currently being used including fuels containing >10% ethanol or 20% biodiesel. Therefore, the Spill Containment Liner should have the same chemical resistance to the UL 2447 test fuels as the DPM "Products Evaluated" listed above.

Disclaimer: Underwriters Laboratories (UL) is an independent testing laboratory and use of, in any way, of the UL Listing or Registered Trade Mark UL is prohibited unless specifically authorized by Underwriters Laboratories.

Very truly yours,

Brian

Brian E Lewis, PE



Roundtable Engineering Solutions, Inc
660 Southpointe CT, Unit 300G
Colorado Springs, CO 80906

NOTICE OF COMPLETION OF THIRD-PARTY UL 2447 EVALUATION

February 3, 2021

Mr. Josh Dow
Diversified Products Manufacturing Inc
5523 Baggett Marysville Rd
Oroville, CA 95965

RE: NDE Reference No: NDE20201020
Third-Party Certification under UL 2447- Outline of Investigation for
Fittings Accessories for Fuels

Products Evaluated: Split Repair Fittings & Test Reducers for Containment Sumps for Fuels
PF-Penetration Fittings Series, Sump Entry Fittings and Test Reducers
SR- Split Repair Sump Entry Fittings and Test Reducer Series
FG/PG Spilt Repair Series
CH- Series, All Chemicals used in the installation process.
SU - Sumps and Accessories

Dear Mr. Dow

In reference to the above listed products, we have performed our UL 2447 Third-Party inspection and testing. All products listed were determined to comply with the "Outline of Investigation for Fittings and Accessories for Fuels".

It is our opinion that both the design and materials used in the above products are based on sound engineering principles and the materials are compatible with all motor fuels and additives currently being used including fuels containing >10% ethanol or 20% biodiesel. Therefore, the Spill Containment Liner should have the same chemical resistance to the UL 2447 test fuels as the DPM "Products Evaluated" listed above.

Further to your recent request with regard to your Canadian distributors utilization of the above test results, we have compared the testing requirements of UL (US) 2447 with CAN/ULC-S664:2017 and found them to be virtually identical.

There were only two differences that we found between the two Codes.

1. ULC S664 Section 5.8.5 "Extreme Low Temperature Impact Test – requires testing at -40°F and our tests were conducted at a minimum temperature of -30°F.
2. ULC S664 Section Appendix B 1.1 Defines 21 specific grades of fuel while UL US defines four grades of fuel, which covers the wide range of fuels commonly used by gasoline and diesel-powered vehicles.

Furthermore, we have reviewed the UL (US) website which contains the following relevant statement confirming the sharing of UL specifications between UL – US and UL - Canada:

"UL STANDARDS: ACCREDITED IN THE US AND CANADA"

In the US, UL is accredited by the American National Standards Institute (ANSI) as an audited designator. In 2013, UL was accredited by the Standards Council of Canada (SCC) as a nationally recognized Standards Development Organization (SDO) able to develop National Standards of Canada (NSCs).

UL's Standards Technical Panels (STPs) serve as the consensus body for both American National Standards (ANS) and National Standards of Canada (NSC). Essential information About UL's standards development programs, how to Access Standards, and how to participate in the UL programs used to Develop Standards is available on this site."

It should not be inferred that our test of DPM products addresses the issue of long-term quality control issues as both UL (US) and UL Canada do with their annual subscription programs.

Disclaimer: Underwriters Laboratories (UL – US & UL - Canada) are independent testing laboratories and use of, in any way, of the UL Listing or Registered Trademark UL is prohibited unless specifically authorized by Underwriters Laboratories (US or Canada).

Very truly yours,



N.D. Eryou, Ph.D., P.E.
Eryou Engineering
dennis@eryouengineering.com

N.D. Eryou, PhD, PE
Consulting Engineer

Florida Office
1460 Breezy Way
Spring Hill, FL 34608
352.684.7275
Alex@eryouengineering.com

Southwest Florida Office
5051 Castello Drive, Suite 244
Naples, FL 34103
239.530.4301
dennis@eryouengineering.com

New Jersey Office
107 Lincoln Avenue
Florham Park, NJ 07932
973.919.6842
robert@eryouengineering.com

NOTICE OF COMPLETION OF THIRD-PARTY UL 2447 EVALUATION

October 22, 2020

Mr. Josh Dow
Diversified Products Manufacturing Inc
5523 Baggett Marysville Rd
Oroville, CA 95965

RE: NDE Reference No: NDE20201020
Third-Party Certification under UL 2447- Outline of Investigation for
Fittings Accessories for Fuels

Products Evaluated: Split Repair Fittings & Test Reducers for Containment Sumps for Fuels
PF-Penetration Fittings Series, Sump Entry Fittings and Test Reducers
SR- Split Repair Sump Entry Fittings and Test Reducer Series
FG/PG Spilt Repair Series
CH- Series, All Chemicals used in the installation process
SU- Sumps and Accessories

Dear Mr. Dow

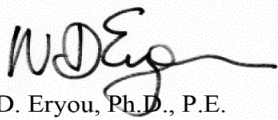
In reference to the above listed products, we have performed our UL 2447 Third-Party inspection

and testing. All products listed were determined to comply with the “Outline of Investigation for Fittings and Accessories for Fuels”.

It is our opinion that both the design and materials used in the above products are based on sound engineering principles and the materials are compatible with all motor fuels and additives currently being used including fuels containing >10% ethanol or 20% biodiesel. Therefore, the Spill Containment Liner should have the same chemical resistance to the UL 2447 test fuels as the DPM “Products Evaluated“ listed above.

Disclaimer: Underwriters Laboratories (UL) is an independent testing laboratory and use of, in any way, of the UL Listing or Registered Trade Mark UL is prohibited unless specifically authorized by Underwriters Laboratories.

Very truly yours,



N.D. Eryou, Ph.D., P.E.

